



Milwards | Harlow | Essex | CM19 4SJ

£1,000 Per Month



Milwards | Harlow
Essex | CM19 4SJ
£1,000 Per Month

A ONE BEDROOM GROUND FLOOR FLAT with communal garden. The property comprises of a fitted kitchen, spacious lounge, large bedroom and tiled bathroom suite. Features include electric heating via storage radiators and UPVC double glazed windows. Milwards is located a short walk from local primary schools and other amenities. The property is available unfurnished early June.

- Ground Floor Flat
- Close to Local Amenities
- Council Tax Band: B
- Double Bedroom
- Available Early June
- EPC Rating: E

Entrance Hall
3'3" x 7'11" (1.00 x 2.43)

Storage Room
4'10" x 5'1" (1.49 x 1.57)

Bathroom
6'3" x 5'3" (1.93 x 1.61)

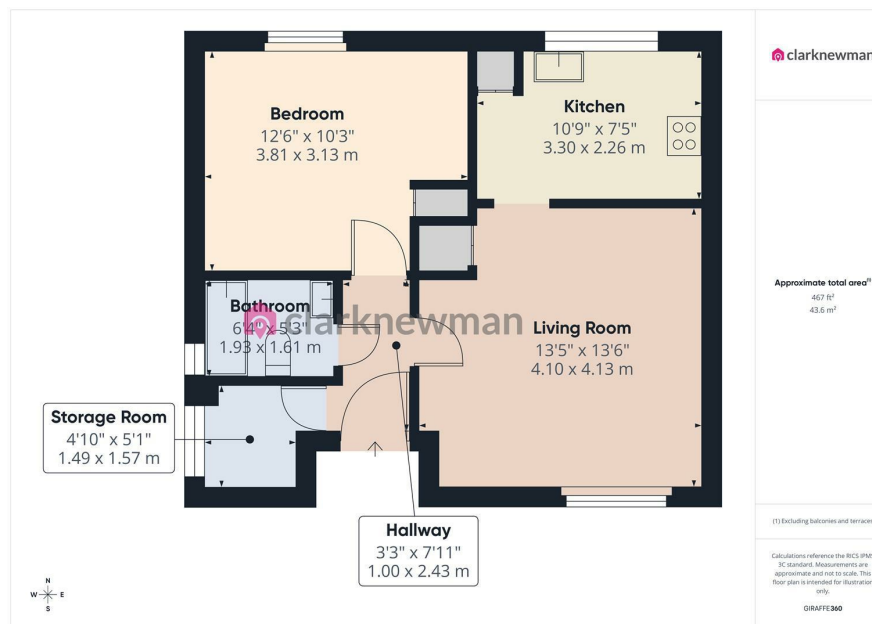
Bedroom
12'5" x 10'3" (3.81 x 3.13)

Living Room
13'5" x 13'6" (4.10 x 4.13)

Kitchen
13'5" x 13'6" (4.10 x 4.13)

Communal Garden

Local Area



Energy Efficiency Rating		Current	Potential
Very energy efficient - lower running costs			
(92 plus)	A		
(81-91)	B		
(69-80)	C		76
(55-68)	D		
(39-54)	E	53	
(21-38)	F		
(1-20)	G		
Not energy efficient - higher running costs			
England & Wales		EU Directive 2002/91/EC	

Equity House
4-6 Market Street
Harlow
Essex
CM17 0AH
01279 400444
hello@clarknewman.co.uk
www.clarknewman.co.uk