

# LIVERMORES

THE ESTATE AGENTS

2 Bedrooms

House - Terraced

Price Guide

£375,000

Located in

Dartford



[www.livermores.co.uk](http://www.livermores.co.uk)



# 3 Murray Drive

Dartford DA2 6FS



Nestled in the charming Murray Drive, Stone, Dartford, this two-bedroom Grade II listed family home is a true gem waiting to be discovered. Boasting a large lounge/dining room, first -floor bathroom & downstairs cloakroom, this terraced house offers a perfect blend of historic charm and modern comfort.

One of the standout features of this property is the two allocated parking spaces, a rare find in this sought-after area. The secure gated entrance ensures privacy and security, making it an ideal choice for families or those who value peace of mind.

Conveniently located in a popular development, this home offers a private retreat away from the hustle and bustle, yet it is just a stone's throw away from Stone Crossing Station, providing easy access to transportation links.

The property's layout includes a downstairs W.C., adding to the convenience and functionality of the space. Whether you're looking for a cozy family home or a stylish retreat, this property has the potential to cater to your needs.

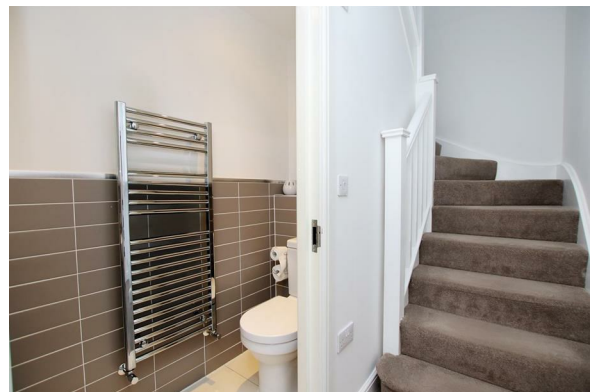
Don't miss the opportunity to make this charming Grade II listed house your own - book a viewing today and step into a world of comfort, style, and convenience.





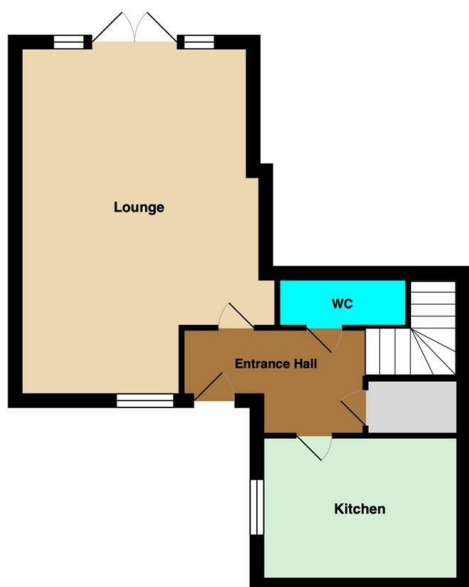
# 3 Murray Drive

£375,000 Leasehold



- GUIDE PRICE £375,000 - £400,000
- TWO ALLOCATED PARKING SPACES
- SECURE GATED ENTRANCE
- PRIVATE LOCATION
- SIMILAR PROPERTIES REQUIRED
- TWO DOUBLE BEDROOM TERRACED HOUSE
- LOCATED IN POPULAR DEVELOPMENT
- DOWNSTAIRS W.C. & FIRST FLOOR BATHROOM
- CLOSE PROXIMITY OF STONE CROSSING STATION
- COUNCIL TAX BAND ". AWAITING EPC REPORT





## Council Tax Band D

## Local Authority DARTFORD

Agents Note: Whilst every care has been taken to prepare these particulars, they are for guidance purposes only. All measurements are approximate and are for general guidance purposes only and whilst every care has been taken to ensure their accuracy, they should not be relied upon and potential buyers/tenants are advised to recheck the measurements.

Energy Efficiency Rating		
	Current	Potential
Very energy efficient - lower running costs		
(92 plus) <b>A</b>		
(81-91) <b>B</b>		
(69-80) <b>C</b>		
(55-68) <b>D</b>		
(39-54) <b>E</b>		
(21-38) <b>F</b>		
(1-20) <b>G</b>		
Not energy efficient - higher running costs		
<b>England &amp; Wales</b>	EU Directive 2002/91/EC	

1 Hythe Street

Dartford

Kent

DA1 1BE

**LIVERMORES**  
THE ESTATE AGENTS

dartford@livermores.co.uk

01322 228090

www.livermores.co.uk