

**LIVERMORES**  
THE ESTATE AGENTS

3 Bedrooms

House - Detached

Offers In The Region Of

£475,000

Located in

Gravesend



[www.livermores.co.uk](http://www.livermores.co.uk)



# 15 Millfield Drive

Gravesend Kent DA11 8BH



An attractive three bedroom property tucked away in a sought after Cul-de-sac on a popular residential development ideally located for a choice of schools , local shops and easy access to the A2. The property features a Master bedroom with en-suite , a ground floor Cloakroom and an integral garage which provides the opportunity to create further living space or potential bedroom ( STPP). There is a delightful southerly rear garden which enjoys a good deal of seclusion. The property is also only moments walk away from a small park at the end of the road. VIEWING RECOMMENDED

# 15 Millfield Drive

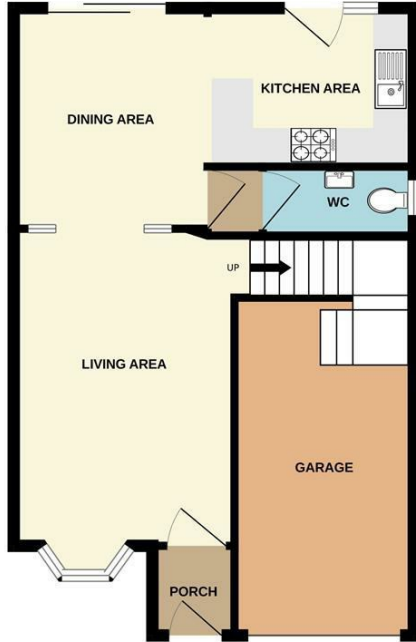
£475,000 Freehold



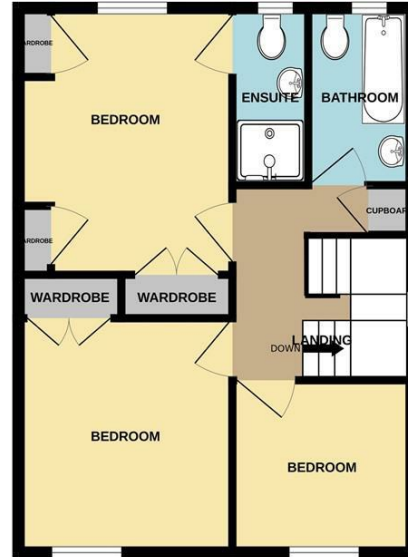
- OFFERS IN REGION OF £475,000
- POPULAR LOCATION
- NEAR LOCAL SCHOOLS
- NEAR TO EBBSFLEET INTERNATIONAL STATION
- SIMILAR PROPERTIES REQUIRED
- WELL PRESENTED PROPERTY
- MASTER BEDROOM WITH ENSUITE
- INTEGRAL GARAGE AND DRIVE.
- GAS CENTRAL HEATING
- EPC RATING 'C' COUNCIL TAX BAND 'E'



GROUND FLOOR



1ST FLOOR



Measurements are approximate. Not to scale. Illustrative purposes only  
Made with Metropix ©2023

## Council Tax Band

## Local Authority

Agents Note: Whilst every care has been taken to prepare these particulars, they are for guidance purposes only. All measurements are approximate and are for general guidance purposes only and whilst every care has been taken to ensure their accuracy, they should not be relied upon and potential buyers/tenants are advised to recheck the measurements.

Energy Efficiency Rating		
	Current	Potential
Very energy efficient - lower running costs		
(92 plus) <b>A</b>		
(81-91) <b>B</b>		84
(69-80) <b>C</b>	69	
(55-68) <b>D</b>		
(39-54) <b>E</b>		
(21-38) <b>F</b>		
(1-20) <b>G</b>		
Not energy efficient - higher running costs		
England & Wales	EU Directive 2002/91/EC	

1 Hythe Street

Dartford

Kent

DA1 1BE

**LIVERMORES**  
THE ESTATE AGENTS

dartford@livermores.co.uk

01322 228090

www.company.co.uk