



LIVERMORES
THE ESTATE AGENTS

3 Bedrooms

House - Semi-Detached

Located in Dartford

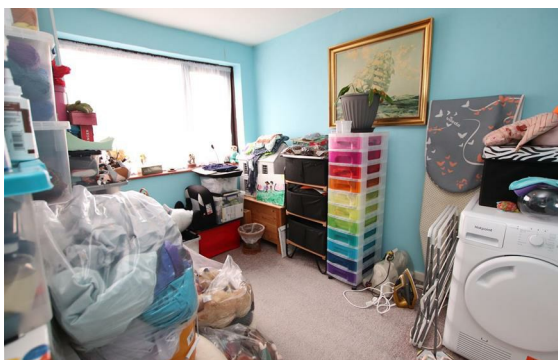
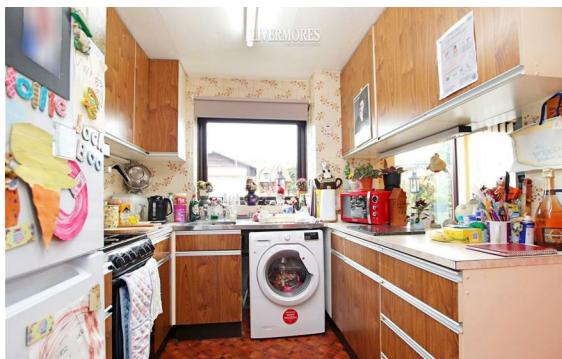
£400,000



dartford@livermores.co.uk

www.livermores.co.uk

01322 228090



1 Hythe Street

Dartford

Kent

DA1 1BE

01322 228090

dartford@livermores.co.uk

www.livermores.co.uk

GUIDE PRICE £400,000 TO £425,000* 3 BEDROOM SEMI-DETACHED HOUSE
POPULAR FLEET ESTATE* WET ROOM* SEPERATE WC* OFF ROAD PARKING*
GARAGE* CLOSE PROXIMITY TO FLEETDOWN PRIMARY SCHOOL AND THE
LEIGH ACADEMY*

Energy Efficiency Rating: C

Agents Note: Whilst every care has been taken to prepare these particulars, they are for guidance purposes only. All measurements are approximate and are for general guidance purposes only and whilst every care has been taken to ensure their accuracy, they should not be relied upon and potential buyers/tenants are advised to recheck the measurements.