



LIVERMORES
THE ESTATE AGENTS

2 Bedrooms

House - Semi-Detached

Located in Dartford

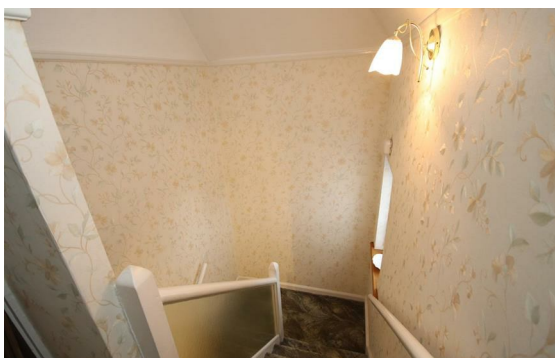
£350,000



dartford@livermores.co.uk

www.livermores.co.uk

01322 228090



GUIDE PRICE £350,000 - £375,000... Livermores are proud to present to the market this extended, two double bedroom semi-detached home. Being located within walking distance from Dartford Station and Dartford town centre, and portraying huge amounts of potential, we believe this property would be an excellent purchase for the first-time buyer audience and investors. The property is also being sold CHAIN FREE!

Furthermore, the property has its own driveway entrance and garage, with a private rear garden for all friends and family to enjoy. In addition, the property accommodates potential buyers with two double bedrooms, dining room, sizeable bathroom, extended kitchen with office space.

Additionally, with plenty of double glazed windows, good lighting shows throughout the property and especially onto the large lounge area. VIEWING HIGHLY RECOMMENDED.

Energy Efficiency Rating: C

Agents Note: Whilst every care has been taken to prepare these particulars, they are for guidance purposes only. All measurements are approximate and are for general guidance purposes only and whilst every care has been taken to ensure their accuracy, they should not be relied upon and potential buyers/tenants are advised to recheck the measurements.

LIVERMORES
THE ESTATE AGENTS

1 Hythe Street
Dartford
Kent
DA1 1BE

01322 228090

dartford@livermores.co.uk

www.livermores.co.uk