



LIVERMORES
THE ESTATE AGENTS

2 Bedrooms

Flat - Retirement

Located in Dartford

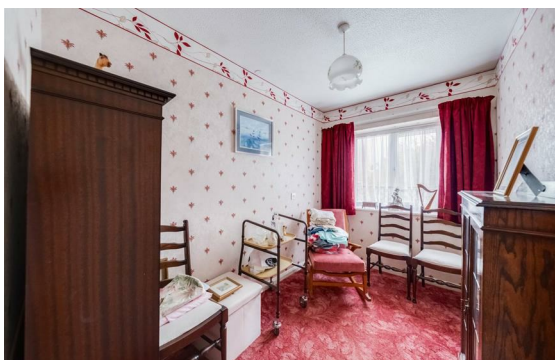
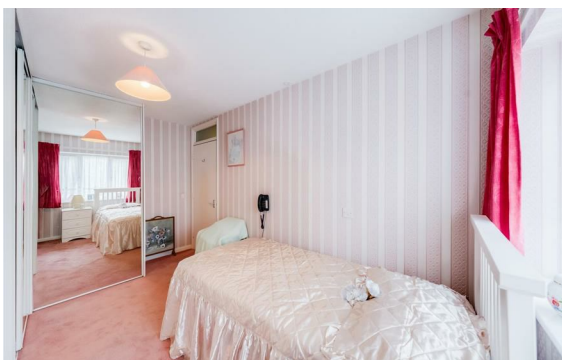
£147,500



dartford@livermores.co.uk

www.livermores.co.uk

01322 228090



Nestled on Lunedale Road in the charming area of Dartford, this delightful first-floor retirement flat is designed specifically for those aged over 60. Spanning an impressive 645 square feet, the property boasts two well-proportioned bedrooms, providing ample space for relaxation and comfort. The spacious lounge serves as the heart of the home, perfect for entertaining guests or enjoying quiet evenings in.

The fitted kitchen is both practical and inviting, allowing for easy meal preparation. The bathroom is equipped with a convenient shower, catering to the needs of its residents. This flat is not only a comfortable living space but also offers access to communal gardens and a drying area, enhancing the sense of community among residents.

For added convenience, the property includes unreserved private parking, ensuring that residents have a secure place for their vehicles. The presence of a resident estate

Energy Efficiency Rating: C

Agents Note: Whilst every care has been taken to prepare these particulars, they are for guidance purposes only. All measurements are approximate and are for general guidance purposes only and whilst every care has been taken to ensure their accuracy, they should not be relied upon and potential buyers/tenants are advised to recheck the measurements.

LIVERMORES
THE ESTATE AGENTS

1 Hythe Street
Dartford
Kent
DA1 1BE

01322 228090

dartford@livermores.co.uk

www.livermores.co.uk