

**LIVERMORES**  
THE ESTATE AGENTS

2 Bedrooms

House - End Terrace

Offers In The Region Of

£375,000

Located in

Dartford



[www.livermores.co.uk](http://www.livermores.co.uk)



# 43 Sherbourne Close

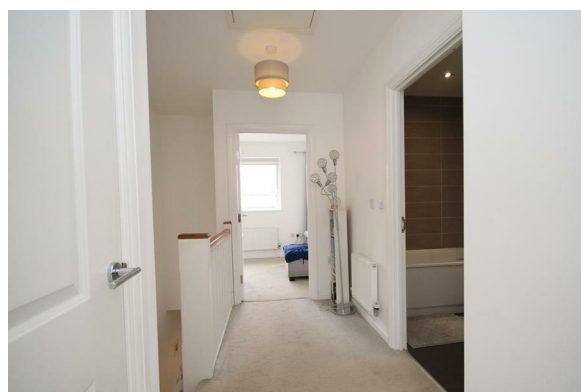
Dartford Kent DA1 5WQ



OFFERS IN THE REGION OF £375,000\* MODERN END OF TERRACE HOUSE \* SPACIOUS LOUNGE/DINER \* LOVELY FITTED KITCHEN \* GROUND FLOOR W/C \* TWO DOUBLE BEDROOMS \* FIRST FLOOR BATHROOM\* TEN MINUTE WALK TO DARTFORD RAIL STATION \* DRIVEWAY AND ALLOCATED PARKING SPACE \* DOUBLE GLAZING \* CUL DE SAC LOCATION \* REAR GARDEN \* VIEWING HIGHLY RECOMMENDED\*

# 43 Sherbourne Close

£375,000 Freehold



- OFFERS IN THE REGION OF £375,000
- DRIVEWAY AND ALLOCATED PARKING SPACE
- 10 MINUTE WALK TO DARTFORD RAIL STATION
- DOWNSTAIRS W.C.
- SIMILAR PROPERTIES REQUIRED
- MODERN TWO BEDROOM END OF TERRACE
- SPACIOUS LOUNGE/DINER
- FIRST FLOOR BATHROOM
- LOVELY GARDEN SPACE
- EPC RATING 'B' COUNCIL TAX BAND 'D'



## Council Tax Band D

## Local Authority DARTFORD

Agents Note: Whilst every care has been taken to prepare these particulars, they are for guidance purposes only. All measurements are approximate and are for general guidance purposes only and whilst every care has been taken to ensure their accuracy, they should not be relied upon and potential buyers/tenants are advised to recheck the measurements.

Energy Efficiency Rating		
	Current	Potential
Very energy efficient - lower running costs		
(92 plus) <b>A</b>		<b>96</b>
(81-91) <b>B</b>	<b>83</b>	
(69-80) <b>C</b>		
(55-68) <b>D</b>		
(39-54) <b>E</b>		
(21-38) <b>F</b>		
(1-20) <b>G</b>		
Not energy efficient - higher running costs		
England & Wales		EU Directive 2002/91/EC

1 Hythe Street  
Dartford  
Kent  
DA1 1BE



dartford@livermores.co.uk

01322 228090

www.company.co.uk