



2 Bedrooms

House - Terraced

Located in Dartford

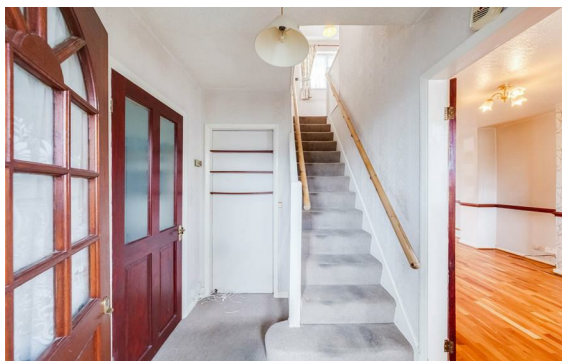
£300,000



dartford@livermores.co.uk

www.livermores.co.uk

01322 228090



Nestled in the charming area of Littlebrook Manorway, Dartford, this delightful terraced house presents an excellent opportunity for both first-time buyers and those seeking a comfortable rental. The property boasts two inviting reception rooms, perfect for entertaining guests or enjoying quiet evenings at home.

With two well-proportioned bedrooms, this residence offers ample space for relaxation and rest. The bathroom is conveniently located, ensuring ease of access for all occupants.

The house is situated in a friendly neighbourhood, providing a sense of community while still being close to local amenities and transport links. This makes it an ideal choice for those who appreciate both convenience and a tranquil living environment.

Overall, this property is a wonderful blend of comfort and practicality, making it a must-see for anyone looking to settle in Dartford.

Energy Efficiency Rating: E

Agents Note: Whilst every care has been taken to prepare these particulars, they are for guidance purposes only. All measurements are approximate and are for general guidance purposes only and whilst every care has been taken to ensure their accuracy, they should not be relied upon and potential buyers/tenants are advised to recheck the measurements.

LIVERMORES
THE ESTATE AGENTS

1 Hythe Street
Dartford
Kent
DA1 1BE

01322 228090

dartford@livermores.co.uk

www.livermores.co.uk