

LIVERMORES

THE ESTATE AGENTS

2 Bedrooms

Bungalow - Semi Detached

Price Guide

£425,000

Located in

Dartford



www.livermores.co.uk



21 Brentfield Road

Dartford Kent DA1 1YJ



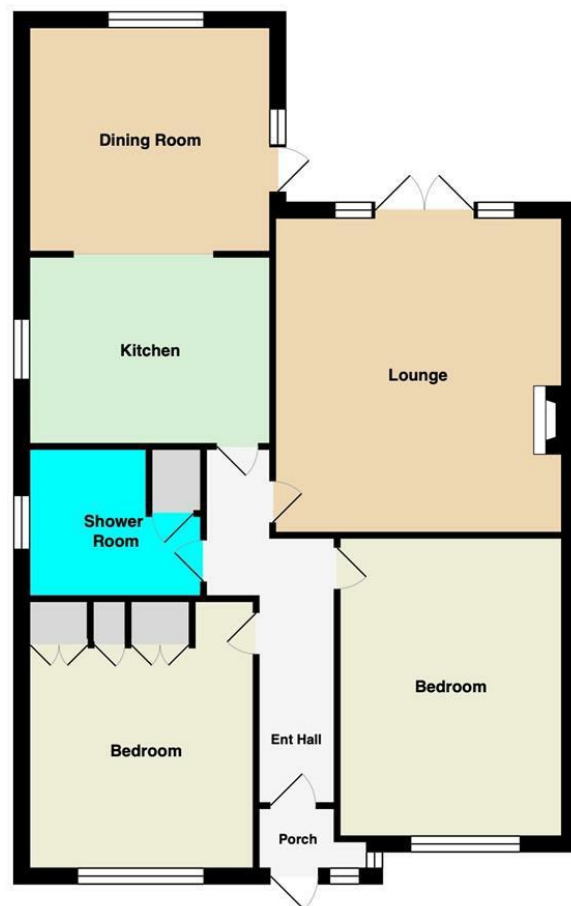
GUIDE PRICE £425,000 to £450,000 Situated in a popular cul-de-sac and offered to the market with NO CHAIN, is this 2 DOUBLE BEDROOM semi detached bungalow. The property is in nice condition and comprises a spacious reception room, extended kitchen/diner, 2 double bedrooms, and a shower room. Externally, there is a rear garden with access to a large garage and off road parking to the front for 2/3 cars. The property would make someone a really lovely home and is located close to good schools, both primary & secondary and has fantastic potential to extend (subject to planning permission). INTERNAL VIEWING HIGHLY RECOMMENDED

21 Brentfield Road

£425,000 Freehold



- GUIDE PRICE £425,000 TO £450,000
- NO CHAIN
- 2 DOUBLE BEDROOM BUNGALOW
- OFF ROAD PARKING
- SIMILAR PROPERTIES REQUIRED
- SEMI DETACHED
- EXTENDED KITCHEN/DINER
- REAR GARDEN
- GARAGE TO REAR
- EPC RATING D COUNCIL TAX BAND D



Council Tax Band D

Local Authority Dartford

Agents Note: Whilst every care has been taken to prepare these particulars, they are for guidance purposes only. All measurements are approximate and are for general guidance purposes only and whilst every care has been taken to ensure their accuracy, they should not be relied upon and potential buyers/tenants are advised to recheck the measurements.

Energy Efficiency Rating		
	Current	Potential
Very energy efficient - lower running costs		
(92 plus) A		
(81-91) B		84
(69-80) C		
(55-68) D	64	
(39-54) E		
(21-38) F		
(1-20) G		
Not energy efficient - higher running costs		
England & Wales		EU Directive 2002/91/EC

1 Hythe Street
Dartford
Kent
DA1 1BE



dartford@livermores.co.uk

01322 228090

www.company.co.uk