



LIVERMORES
THE ESTATE AGENTS

3 Bedrooms

House - Semi-Detached

Located in Crayford

£375,000



crayford@livermores.co.uk

www.company.co.uk

01322 550777



53 Wolsley Close

Crayford DA1 4BE



This delightful three bedroom semi-detached house offers comfortable living with all amenities on your doorstep, all within a quiet cul-de-sac location. Deceptively spacious, and comprising a large lounge/diner offering a versatile space overlooking the low maintenance rear garden, a well equipped modern kitchen and a downstairs W/C for added convenience. The large hallway leads up the stairs to three bedrooms and a recently fitted modern shower room. Whilst the property does not come with parking, there are spaces available on the development for residents and visitors to park.

The property is well positioned, with many amenities of Crayford within walking distance. Excellent schools, two supermarkets, and a selection of shops and eateries, Crayford railway station, and the A2 and M25 are all easily accessible. Situated in a prime location and offering good size accommodation, we recommend a viewing at your earliest opportunity.

The current owner has lived at the property for 31 years and is now looking to downsize locally.



53 Wolsley Close

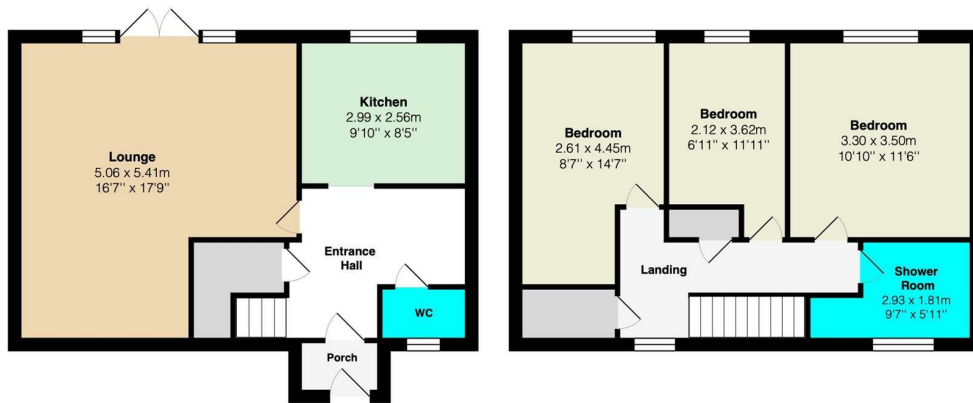
£375,000 Freehold

- THREE BEDROOM SEMI DETACHED HOUSE
- DECEPTIVELY SPACIOUS
- DOWNSTAIRS W/C PLUS UPSTAIRS FAMILY SHOWER ROOM
- CUL-DE-SAC LOCATION
- EPC RATING D COUNCIL TAX BAND C

- LOUNGE/DINER
- CLOSE TO TOWN CENTRE, TRANSPORT LINKS AND EXCELLENT SCHOOLS
- LOW MAINTENANCE REAR GARDEN
- SIMILAR PROPERTIES REQUIRED







LIVERMORES
THE ESTATE AGENTS

126 Crayford Road
Crayford
Kent
DA1 4ES

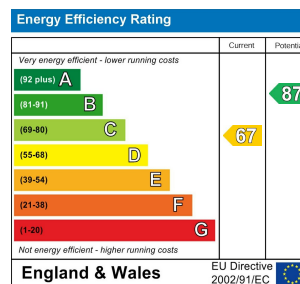
01322 550777

crayford@livermores.co.uk

Council Tax Band: C

Local Authority: Bexley

Agents Note: Whilst every care has been taken to prepare these particulars, they are for guidance purposes only. All measurements are approximate and are for general guidance purposes only and whilst every care has been taken to ensure their accuracy, they should not be relied upon and potential buyers/tenants are advised to recheck the measurements.



www.livermores.co.uk