



LIVERMORES
THE ESTATE AGENTS

2 Bedrooms

House - Terraced

Located in Dartford

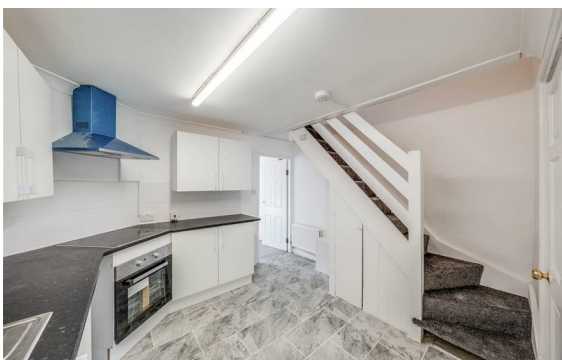
£300,000



lettings@livermores.co.uk

www.livermores.co.uk

01322 311427



Nestled in the charming area of West Hill, Dartford, this delightful terraced house presents an excellent opportunity for both first-time buyers and those seeking a comfortable family home. The property boasts two well-proportioned bedrooms and a modern kitchen, making it ideal for a variety of living arrangements.

Upon entering, you will find a welcoming living room that exudes character, leading seamlessly into a newly renovated kitchen that is perfect for culinary enthusiasts. The kitchen provides convenient access to the garden, an inviting outdoor space that is perfect for relaxation or entertaining guests.

The first floor is thoughtfully designed, while the second floor features two spacious bedrooms that offer ample natural light and storage options. This home is situated in a prime location, just a short stroll from Dartford train station, ensuring easy access to London Bridge, Charing Cross, and Cannon Street. Additionally, the property is in close proximity to the highly regarded Dartford Grammar schools, making it an attractive choice for families.

Energy Efficiency Rating: D

Agents Note: Whilst every care has been taken to prepare these particulars, they are for guidance purposes only. All measurements are approximate and are for general guidance purposes only and whilst every care has been taken to ensure their accuracy, they should not be relied upon and potential buyers/tenants are advised to recheck the measurements.

LIVERMORES
THE ESTATE AGENTS

1 Hythe Street
Dartford
Kent
DA1 1BE

01322 311427

lettings@livermores.co.uk

www.livermores.co.uk