



15 Waterdale Close

Hardwicke, GL2 4JB

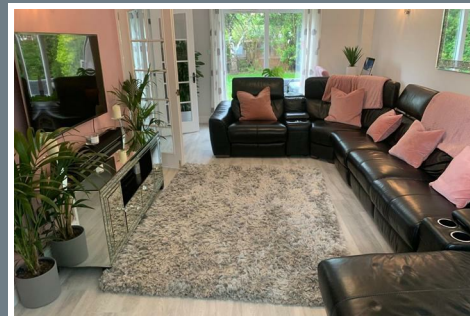
£2,400



15 Waterdale Close

Hardwicke, GL2 4JB

£2,400



A must-see property — now available!

Stunning 6-Bed Detached | Private Drive | Canal-Side | Short & Company Lets Welcome

A beautifully refurbished six-bedroom detached home in the desirable area of Hardwicke — set at the end of a private driveway with easy access to Gloucester Quays, the city centre, and the Sharpness Canal.

6 spacious bedrooms across 3 floors
Ensuite to master, family bathroom & WC
Modern open-plan kitchen/diner & large lounge
Private garden with plum & pear trees
Driveway for 4 cars + large detached garage
Fully refurbished throughout – stylish & spotless
Available furnished or unfurnished

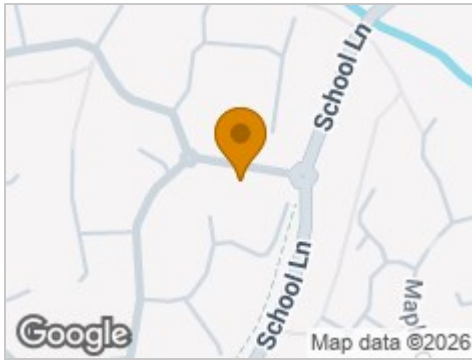
Walk to canal, local pub and countryside trails.
Minutes from shops, schools, and M5 (J12).

Quiet, secluded setting
Perfect for families, relocations & contractors
Short-term & company lets welcome

Now available – don't miss out. Enquire today!



Road Map



Hybrid Map



Terrain Map



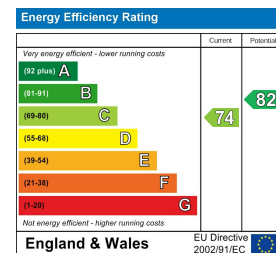
Floor Plan



Viewing

Please contact our HS Homes of Solihull Office on 0121 430 4448 if you wish to arrange a viewing appointment for this property or require further information.

Energy Efficiency Graph



These particulars, whilst believed to be accurate are set out as a general outline only for guidance and do not constitute any part of an offer or contract. Intending purchasers should not rely on them as statements of representation of fact, but must satisfy themselves by inspection or otherwise as to their accuracy. No person in this firm's employment has the authority to make or give any representation or warranty in respect of the property.