

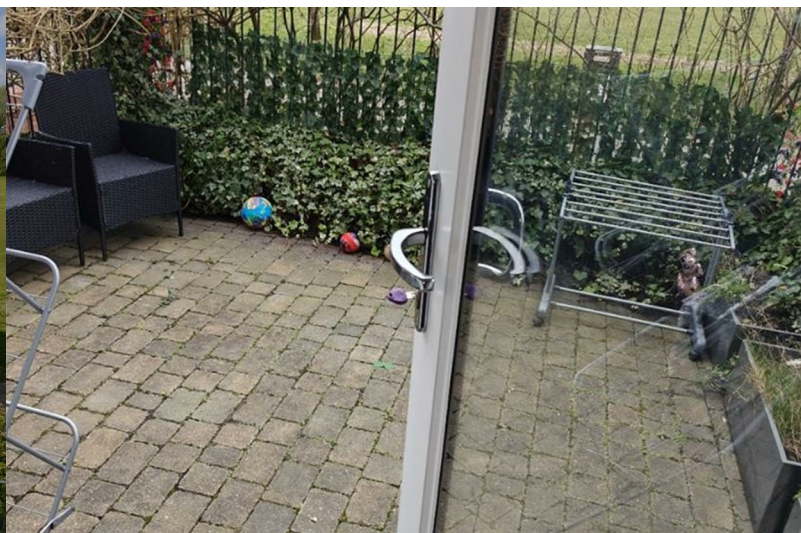


## 20 Parkgate Mews

Shirley, Solihull, B90 3GF

Asking price £375,000

 3
  2
  1
  C



# 20 Parkgate Mews

Shirley, Solihull, B90 3GF

Asking price £375,000



HS Homes are proud to present this beautifully presented three-bedroom townhouse, set within a secure gated development in the heart of Shirley. Offering spacious, modern accommodation over multiple floors, this fully furnished home is ideal for professionals or a family looking to settle in a prime location.

The ground floor boasts a sleek, modern kitchen, downstairs WC and a bright living area with open views of Shirley Park

The first floor has 2 generous sized bedrooms with a Jack and Jill bathroom.

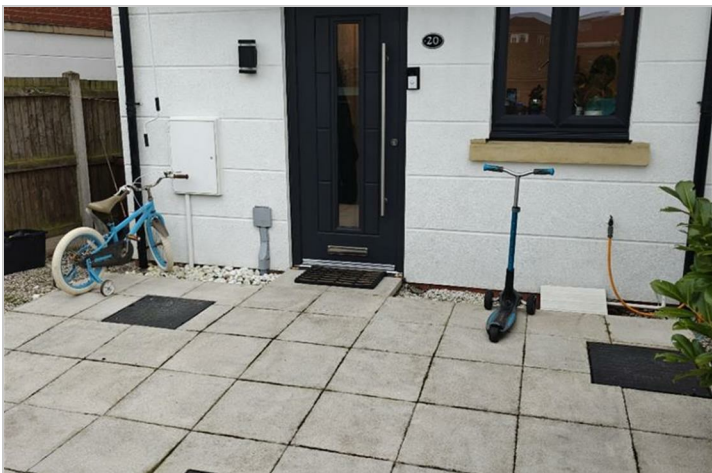
The top floor is the master bedroom benefitting from a stylish en-suite bathroom and Juliet balcony.

Outside, the property offers private parking for two vehicles and is perfectly positioned overlooking Shirley Park, providing a peaceful outlook and ideal access to green spaces.

Located just a short walk from Shirley town centre, you'll find a wealth of shops, cafes, schools, and excellent transport links including easy access to the M42 and Solihull town centre.

This home offers modern living, comfort, and convenience in equal measure.





Road Map



Hybrid Map



Terrain Map



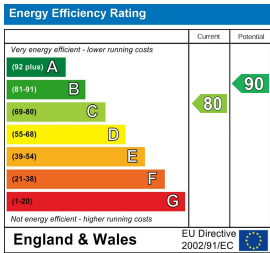
Floor Plan



Viewing

Please contact our HS Homes of Solihull Office on 0121 430 4448 if you wish to arrange a viewing appointment for this property or require further information.

Energy Efficiency Graph



These particulars, whilst believed to be accurate are set out as a general outline only for guidance and do not constitute any part of an offer or contract. Intending purchasers should not rely on them as statements of representation of fact, but must satisfy themselves by inspection or otherwise as to their accuracy. No person in this firms employment has the authority to make or give any representation or warranty in respect of the property.