



121 Chamberlain Crescent

Shirley, Solihull, B90 2DJ

£425,000



121 Chamberlain Crescent

Shirley, Solihull, B90 2DJ

£425,000



HS Homes are proud to present this beautifully refurbished four-bedroom family home, ideally located on Chamberlain Crescent in the heart of Shirley. Offering generous living space, a stunning modern kitchen, and a versatile layout with multiple reception areas, this property is perfect for growing families looking for both style and practicality.

Internally, the property has been thoughtfully updated throughout, featuring a bright and spacious lounge diner that flows effortlessly into the rest of the home. The standout feature is the contemporary kitchen, finished to a high standard with sleek cabinetry, quality worktops, and ample space for cooking and entertaining. In addition, the ground floor benefits from a separate reception room, a study—ideal for working from home—a utility area, and a convenient downstairs WC, creating a highly functional living

space for modern family life.

Upstairs, the property offers four well-proportioned bedrooms, including a generous main bedroom with en-suite, alongside a modern family bathroom. The layout provides flexibility for families, guests, or those needing additional workspace.

Situated in a highly sought-after area of Shirley, the property is within close proximity to excellent local schools, shops, and transport links, making it an ideal choice for families and commuters alike.





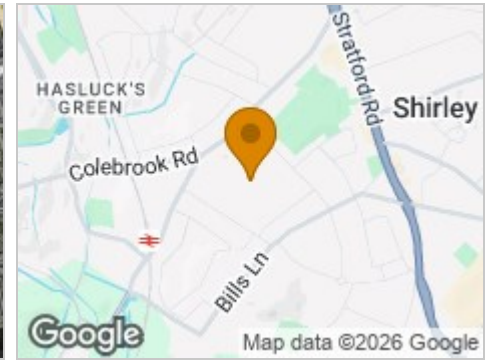
Road Map



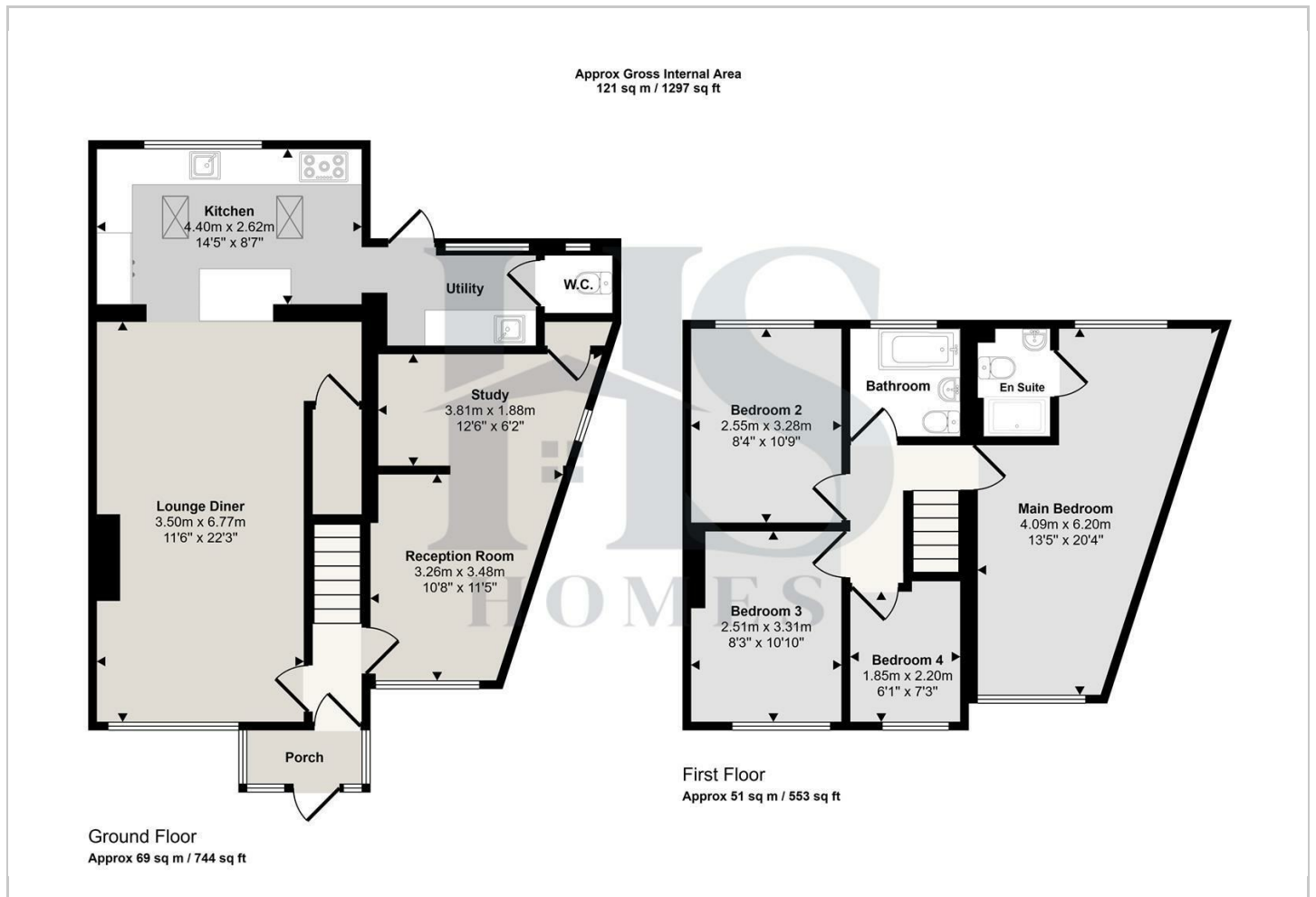
Hybrid Map



Terrain Map



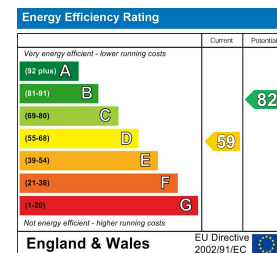
Floor Plan



Viewing

Please contact our HS Homes of Solihull Office on 0121 430 4448 if you wish to arrange a viewing appointment for this property or require further information.

Energy Efficiency Graph



These particulars, whilst believed to be accurate are set out as a general outline only for guidance and do not constitute any part of an offer or contract. Intending purchasers should not rely on them as statements of representation of fact, but must satisfy themselves by inspection or otherwise as to their accuracy. No person in this firm's employment has the authority to make or give any representation or warranty in respect of the property.