

M|V

MARRIOTT VERNON
ESTATE AGENTS



24 Harrington Court Altyre Road, Croydon, CR0 5LE

£1,075 Per month



M|V

MARRIOTT VERNON



£1,075 Per month

24 Harrington Court Altyre Road

Croydon, CR0 5LE

Well Presented Top Floor Studio Flat

Modern Interiors

Light and Spacious Studio Room

New Bathroom

Moments from East Croydon Station and
Tramlink

Fantastic East Croydon Location

Neutral Finish

Separate Well Equipped Kitchen

Gas Central Heating and Double Glazing

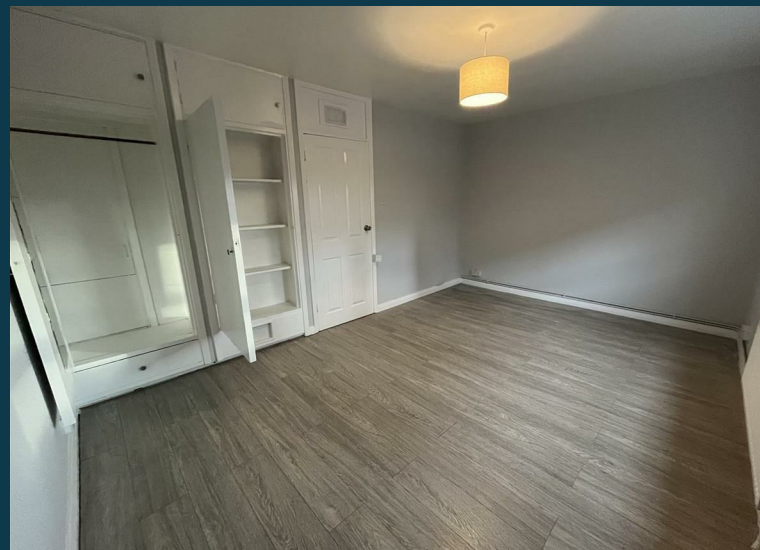
Short Walk to Town Centre Amenities

Marriott Vernon present this well presented top floor studio flat, set within a sought after development moments from East Croydon station. The property offers bright, well planned accommodation with neutral finish throughout. Features include a generous studio room, separate newly fitted kitchen, bathroom, gas central heating, double glazing and useful inbuilt storage.

Accommodation comprises entrance hall with inbuilt storage cupboard, leading into the studio room with double glazed window and ample space for relaxing and dining. The separate kitchen comprises a modern range of matching wall and base units with work surfaces incorporating inset sink unit, inbuilt hob with overhead extractor and electric oven, and further space for appliances. A new modern bathroom completes the accommodation.

The property is superbly located within a few minutes walk of East Croydon station, with superb connections into Central London as well as to Gatwick and the South Coast. The Tramlink service also offers excellent links to Wimbledon and Beckenham. Croydon town centre is just a short distance away offering a huge selection of branded shopping, bars, restaurants and leisure facilities, with the fashionable 'Box Park' development only moments away next to the station.

Viewings are highly recommended.





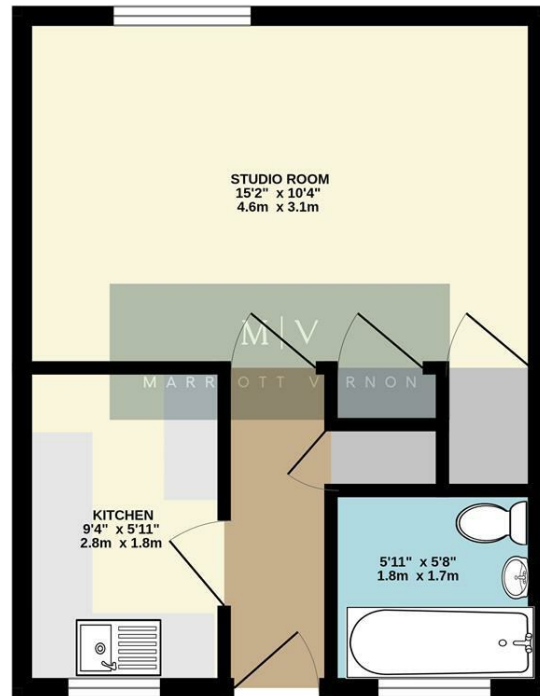
HARRINGTON COURT



!!Attention!!
ALL DELIVERY CAN BE DELIVER TO THE FRONT 2 ENTRANCES
←←←←

Floor Plans

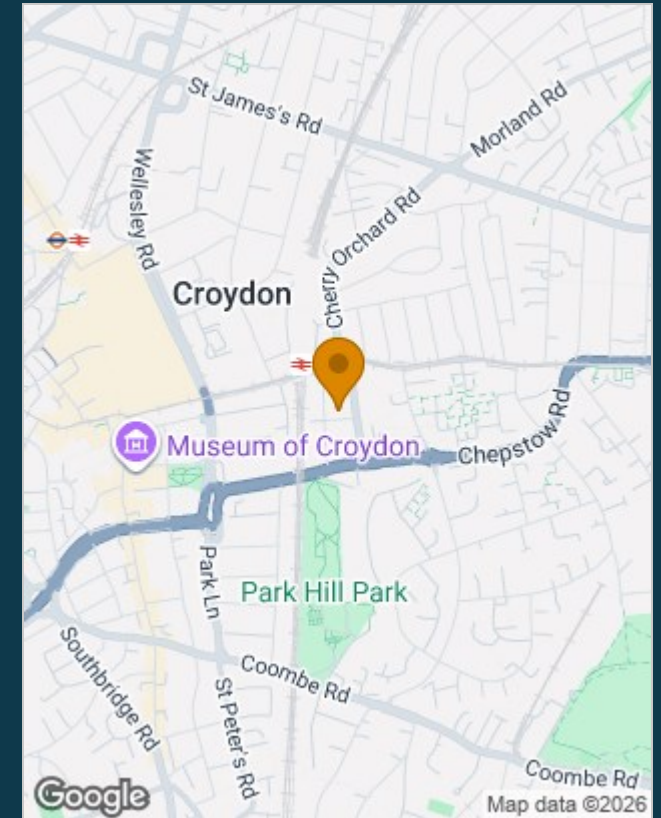
TOP FLOOR



TOTAL FLOOR AREA : 299 sq.ft. (27.8 sq.m.) approx.

Whilst every attempt has been made to ensure the accuracy of the floorplan contained here, measurements of doors, windows, rooms and any other items are approximate and no responsibility is taken for any error, omission or mis-statement. This plan is for illustrative purposes only and should be used as such for any prospective purchaser. The services, systems and appliances shown have not been tested and no guarantee as to their operability or efficiency can be given.
Made with Metopix ©2026

Location Map



Energy Efficiency Rating		
	Current	Potential
Very energy efficient - lower running costs		
(92 plus) A		
(81-91) B		
(69-80) C		
(55-68) D	68	75
(39-54) E		
(21-38) F		
(1-20) G		
Not energy efficient - higher running costs		
England & Wales	EU Directive 2002/91/EC	

Viewing

Please contact our Marriott Vernon Estate Agents Office on 0208 657 7778 if you wish to arrange a viewing appointment for this property or require further information.

The particulars are set out as a general outline only for the guidance of intended purchasers or lessees, and do not constitute, any part of a contract. Nothing in these particulars shall be deemed to be a statement that the property is in good structural condition or otherwise nor that any of the services, appliances, equipment or facilities are in good working order. Purchasers should satisfy themselves of this prior to purchasing.