

M|V

MARRIOTT VERNON

ESTATE AGENTS

Flat 4, Linkfield Court 78 Auckland Road, London, SE19 2DQ

£1,850 Per month



M|V

MARRIOTT VERNON







# Flat 4, Linkfield Court 78 Auckland Road London, SE19 2DQ

Stunning Two Bedroom First Floor Flat

Stylish Interiors and Neutral Finish

Separate Well Equipped Kitchen

Private Garage

Easy Access Crystal Palace and Norwood Junction  
Stations

Moments from South Norwood Lakes

Bright and Spacious Reception Room

Modern Bathroom and Separate WC

Communal Gardens

Walking Distance Crystal Palace 'Triangle'

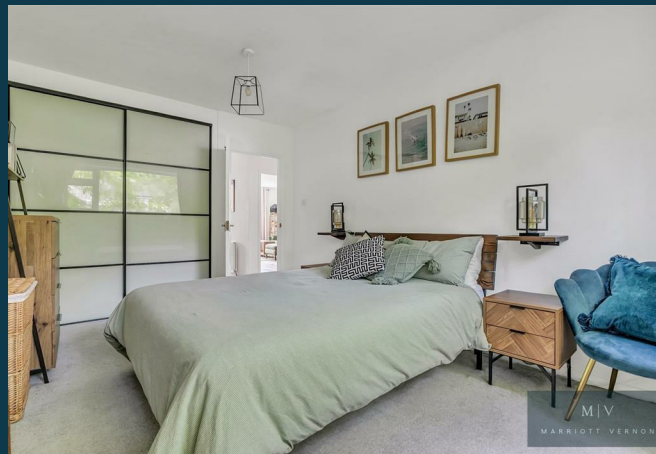
AVAILABLE FROM LAST WEEK OF JULY - Marriott Vernon present to the market this stunning two double bedroom first floor flat with private garage and access to attractive communal gardens, ideally situated in a popular purpose built block within just a short walk of the fashionable Crystal Palace 'triangle'. The property offers beautifully presented living space, with stylish interiors and neutral decor throughout - the perfect blend of comfort and convenience for a modern lifestyle in this fantastic residential location. Features include a bright and spacious reception room, well equipped kitchen, modern bathroom, inbuilt storage, gas central heating, double glazing and garage en-bloc.

Accommodation comprises entrance hall with inbuilt storage, leading into the generous reception room with ample space for relaxing, entertaining and dining. The separate kitchen comprises a modern range of matching wall and base units with work surfaces incorporating inset sink unit, gas hob with overhead extractor and electric oven below, fridge, washing machine and dishwasher. There are two well sized double bedrooms, plus a family bathroom with white suite and separate WC.

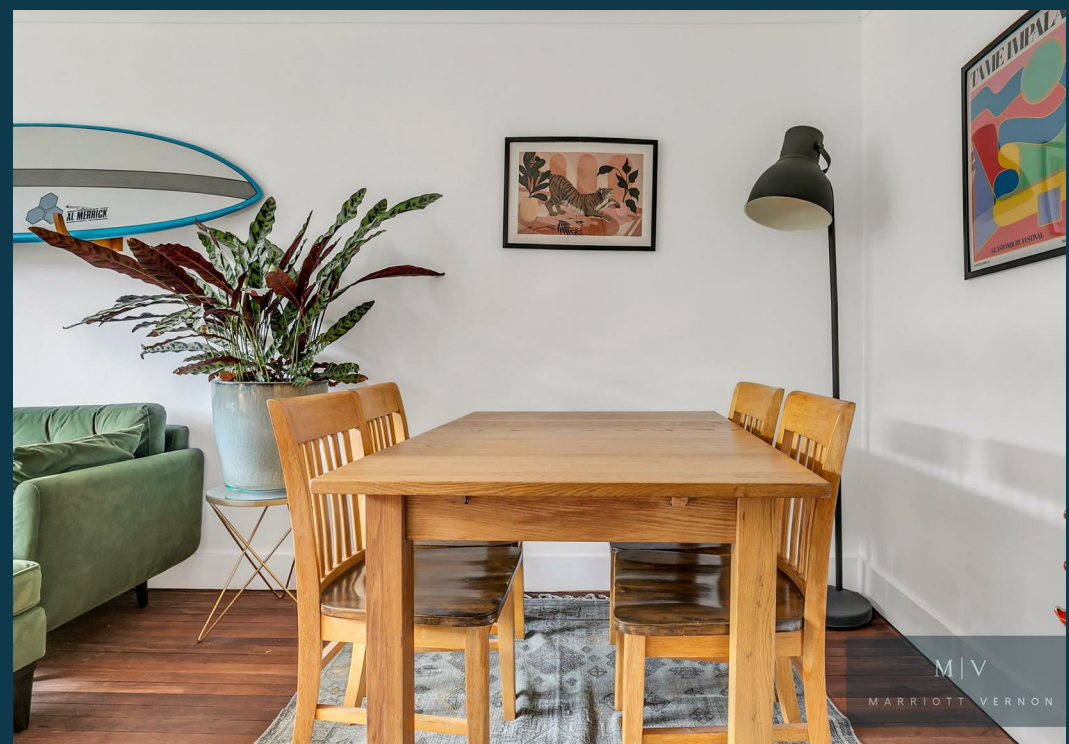
The property is enviably located within easy reach of Crystal Palace and Norwood Junction stations, offering good links into Central London, with numerous regular bus routes with a bus stop directly opposite the block serving the 410 bus which takes you to Norwood Junction, East Croydon and Crystal Palace and providing links to the surrounding area. There are a variety of local amenities within easy reach, with Crystal Palace's fashionable 'Triangle' within walking distance for an array of shops, bars, cafes and restaurants. Delightful South Norwood Lakes is literally on the doorstep, with Crystal Palace Park also near-by, with lake, children's zoo and dinosaur trail.

Viewings are highly recommended.

£1,850 Per month









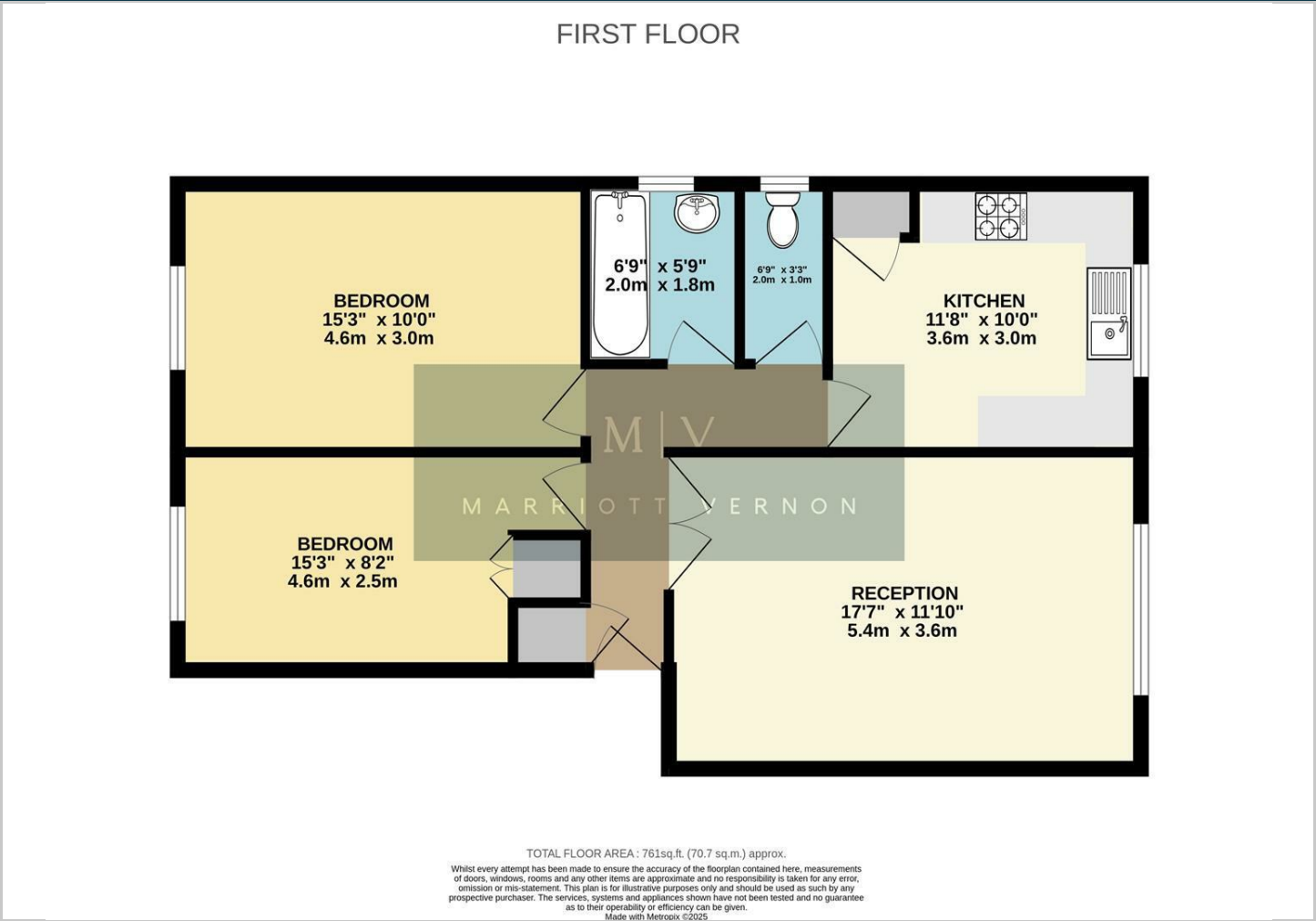


M|V

MARRIOTT VERNON



Floor Plans



Viewing

Please contact our Marriott Vernon Estate Agents Office on 0208 657 7778 if you wish to arrange a viewing appointment for this property or require further information.

The particulars are set out as a general outline only for the guidance of intended purchasers or lessees, and do not constitute, any part of a contract. Nothing in these particulars shall be deemed to be a statement that the property is in good structural condition or otherwise nor that any of the services, appliances, equipment or facilities are in good working order. Purchasers should satisfy themselves of this prior to purchasing.

Bank House, 111 South End, Croydon, CR0 1BJ  
Tel: 0208 657 7778 Email: [enquiries@marriottvernon.com](mailto:enquiries@marriottvernon.com) [www.marriottvernon.com](http://www.marriottvernon.com)

Location Map

