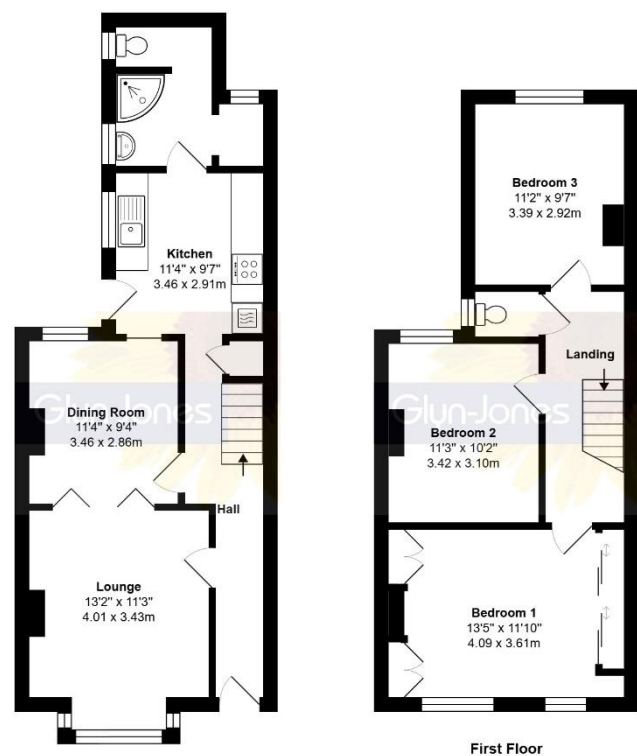


42 Maxwell Road,
Littlehampton, BN17 7BW
£280,000 Freehold

Glyn-Jones



Total Area: 996 ft² ... 92.6 m²

Whilst every attempt has been made to ensure the accuracy of the floor plan contained here, measurements are approximate and no responsibility is taken for error, omission or mis-statement.
This plan is for illustrative purposes only and should be used as such by any prospective purchaser.
Created by 1st Image 2025



Introducing this charming Victorian Terrace House situated in popular residential location of West Sussex. This mid-terrace property offers great potential, boasting two reception rooms perfect for entertaining or simply relaxing with loved ones.

Featuring three double bedrooms, there is ample space for everyone to enjoy. The refitted kitchen and shower room/utility area add a modern touch to this period property, offering both style and convenience. The spacious kitchen provides plenty of room for preparing meals, while the shower room/utility area enhances the functionality of your daily routine.

Step outside into the west-facing low maintenance rear garden, ideal for soaking up the British sunshine or hosting summer barbecues. With the town centre and mainline railway station in proximity, you'll have easy access to amenities, shops, and entertainment options.

This property, in good condition throughout, presents a fantastic opportunity to create the home of your dreams. Contact us today to arrange a viewing and start envisioning the possibilities that await you in this wonderful property. Don't miss out on the chance to make this house your own.

WITH OVER...



At an Average rating of 4.9/5 ★★★★★

NOTE - For clarification we wish to inform prospective purchasers that we have prepared these sales particulars as a general guide. We have not carried out a detailed survey nor tested the services, appliances and specific fittings. Room sizes should not be relied upon for carpets and furnishings.



Littlehampton Office
01903 739000
littlehampton@glyn-jones.com



At an Average rating of

4.9/5 ★★★★★



Littlehampton Office
01903 739000
www.glyn-jones.com

42, Maxwell Road, Littlehampton BN17 7BW
£280,000 Freehold



Located just a stone through of Littlehampton town centre, this property offers easy access to the A259, connecting you to neighbouring towns such as Worthing and Bognor Regis. Local schools at Lyminster and Littlehampton are conveniently located within a 0.5-mile radius, making this an ideal location for families with children.

This charming seaside town located on the southern coast of England, in the county of West Sussex. It lies on the eastern bank of the River Arun, where it meets the English Channel. Known for its beautiful beaches, the town attracts both tourists and locals seeking a relaxing coastal retreat.



Council Tax Band: B
Energy Efficiency Rating: E (42)

WITH
OVER...

500

COMPANY
REVIEWS

At an Average rating of
4.9/5

★★★★★

Glyn-Jones

Littlehampton Office
01903 739000
www.glyn-jones.com