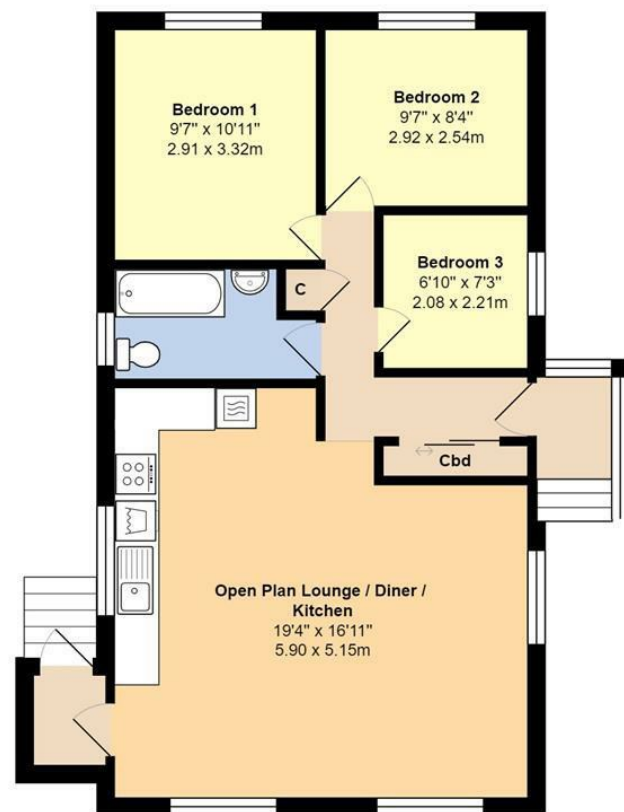


Thornlea Court, Littlehampton BN17 7PZ

£225,000 - Leasehold

Glyn-Jones



Total Area: 757 ft² ... 70.3 m²

Whilst every attempt has been made to ensure the accuracy of the floor plan contained here, measurements are approximate and no responsibility is taken for error, omission or mis-statement.
This plan is for illustrative purposes only and should be used as such by any prospective purchaser.
Created by Jlm 2022



TENURE - Leasehold

Council Tax Band: A
Energy Performance Rating:

AGENT'S NOTE - For clarification, we wish to inform prospective purchasers that we have prepared these sales particulars as a general guide. We have not carried out a detailed survey nor tested the services, appliances and specific fittings. Room sizes should not be relied upon for carpets and furnishings.

WITH OVER...



At an Average rating of 4.9/5 ★★★★★



Glyn-Jones & Company
Littlehampton Office Sales
01903 739000
littlehampton@glyn-jones.com

- Double Unit Park Home
- Open Plan Modern Kitchen/Diner/Living Room
- Mains Gas Central Heating with New Radiators
- Larger Than Average South Facing Garden
- External Insulation
- Three Bedrooms
- Re-fitted Bathroom/W.C
- Double Glazing
- Tandem Driveway
- No Forward Chain

Double Unit Park Home | Three Bedrooms | Open Plan Modern Kitchen/Diner/Living Room | Re-fitted Bathroom/W.C | Mains Gas Central Heating with New Radiators | Double Glazing | Larger Than Average South Facing Garden | Tandem Driveway | External Insulation | Full Residential Site | No Forward Chain



At an Average rating of 4.9/5 ★★★★★



Glyn-Jones & Company
Littlehampton
01903 739000

42 Arundel Drive, Thornlea Court, Littlehampton, West Sussex, BN17 7PZ

