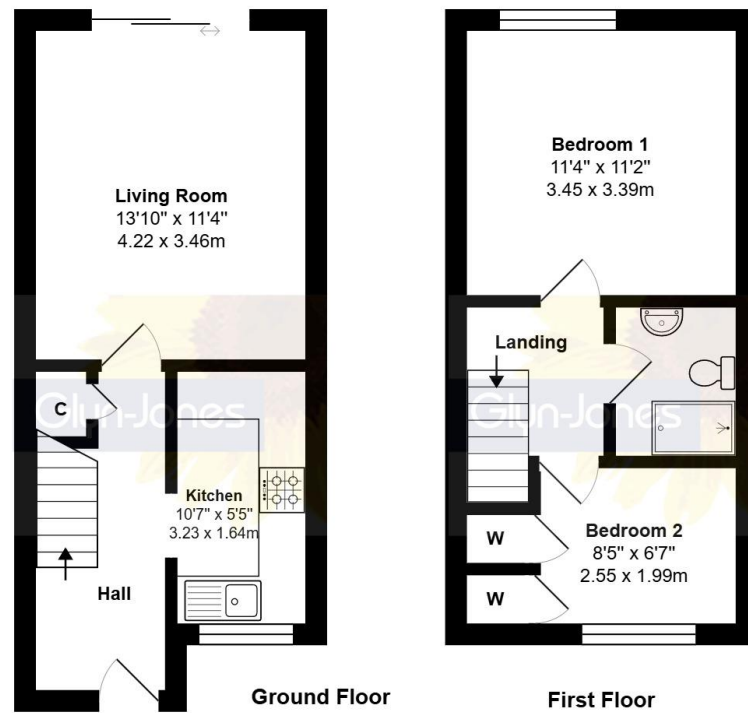


**5 Hampton Court  
River Road, Littlehampton BN17 5BN  
£215,000 Freehold**

**Glyn-Jones**



Total Area: 582 ft<sup>2</sup> ... 54.0 m<sup>2</sup>

Whilst every attempt has been made to ensure the accuracy of the floor plan contained here, measurements are approximate and no responsibility is taken for error, omission or mis-statement. This plan is for illustrative purposes only and should be used as such by any prospective purchaser. Created by 1st Image 2026



This attractive and well-proportioned mid-terraced property is perfectly suited to first-time buyers, buy-to-let investors, or those seeking to downsize. Offering comfortable and versatile accommodation throughout, the home provides an excellent opportunity to create a space tailored to individual tastes and needs.

The accommodation briefly comprises an entrance hall with stairs rising to the first floor and useful under-stairs storage, a spacious lounge with patio doors opening to the garden, and a fitted kitchen featuring a range of base and eye-level units with ample work surface space.

To the first floor, there are two bedrooms and a family bathroom.

The property further benefits from gas-fired central heating and double glazing throughout. While some cosmetic modernisation may be desired, this presents an excellent opportunity for the new owner to personalise the home to their own taste and style.

Externally, the property enjoys a private, enclosed, low-maintenance courtyard garden. Residents also benefit from access to communal gardens and an allocated off-road parking space.

Offered for sale with no forward chain.

WITH OVER...



At an Average rating of



**Glyn-Jones**

Littlehampton Office  
01903 739000  
littlehampton@glyn-jones.com



At an Average rating of



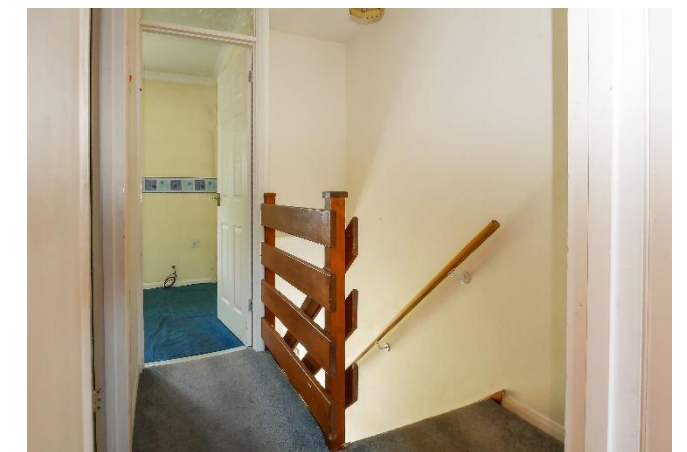
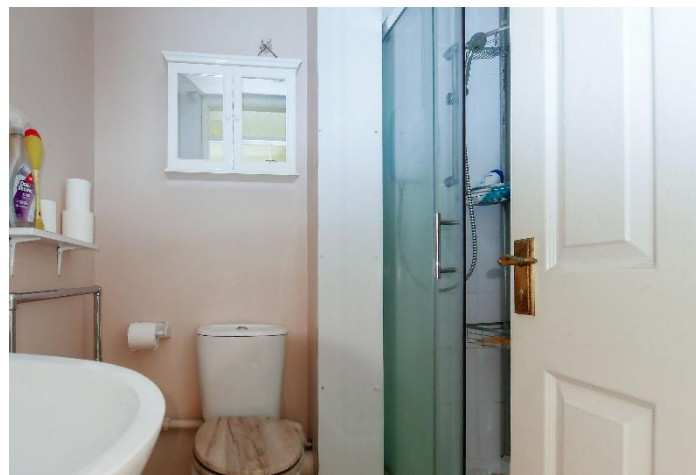
Littlehampton Office  
01903 739000  
www.glyn-jones.com

**5 Hampton Court, River Road, Littlehampton BN17 5BN**  
**£215,000 Freehold**



Hampton Court sits in the River Road area, just north of the seafront and close to the town centre. The neighbourhood is mainly residential, with a mixture of terraced houses, small apartment blocks, and family homes.

Littlehampton is a traditional seaside town on the south coast of England, located where the River Arun meets the English Channel. The town combines coastal living, riverside scenery, and practical commuter connections, giving it a quieter and more residential feel than larger nearby resorts like Brighton.



**Energy Efficient Rating: E | Council Tax Band: D**

NOTE - For clarification we wish to inform prospective purchasers that we have prepared these sales particulars as a general guide. We have not carried out a detailed survey nor tested the services, appliances and specific fittings. Room sizes should not be relied upon for carpets and furnishings.



COMPANY REVIEWS

At an Average rating of

4.9/5 ★★★★★



Littlehampton Office  
01903 739000  
www.glyn-jones.com