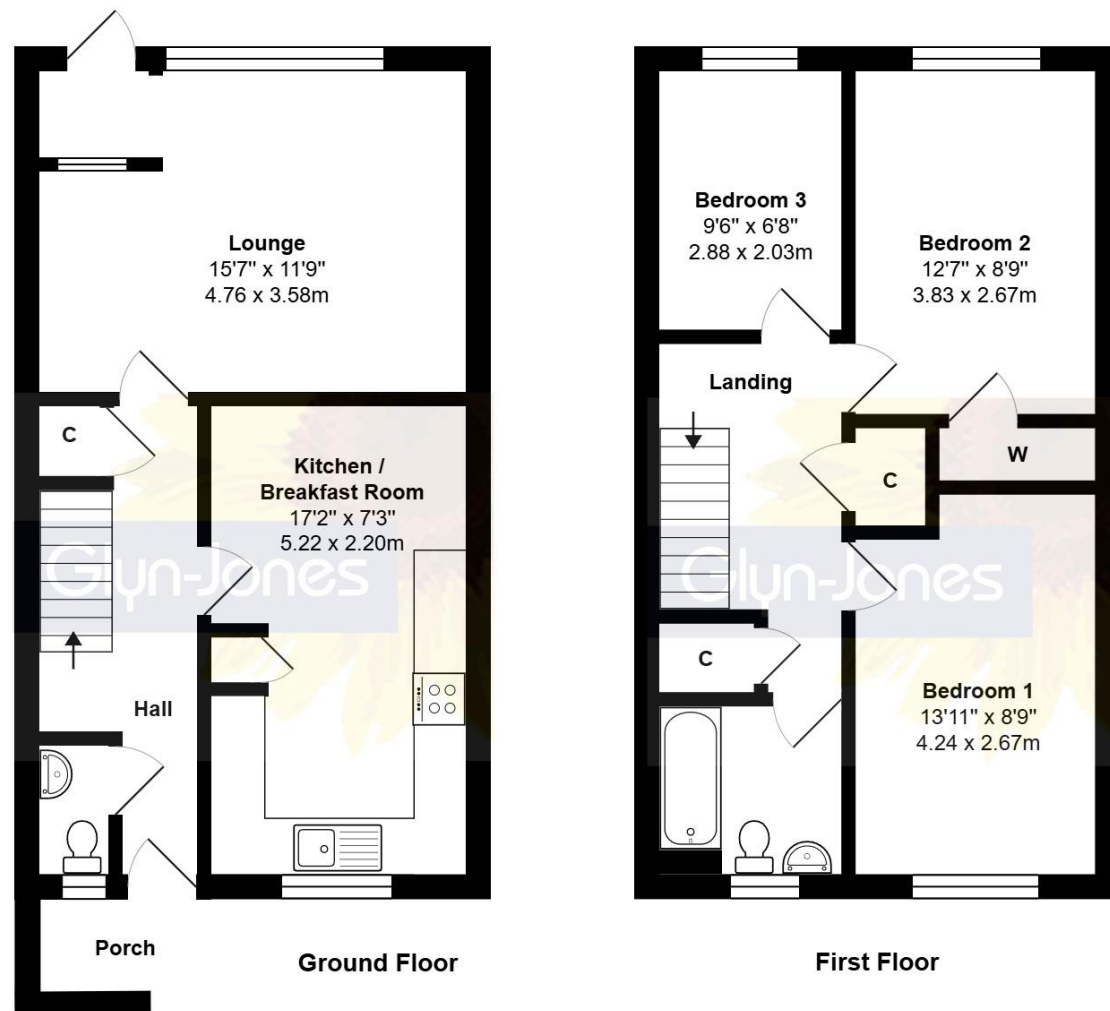


71 Loveys Road, Yapton, Arundel
West Sussex, BN18 0HQ
£270,000 - Freehold

Glyn-Jones



Total Area: 929 ft² ... 86.3 m²

Whilst every attempt has been made to ensure the accuracy of the floor plan contained here, measurements are approximate and no responsibility is taken for error, omission or mis-statement.
 This plan is for illustrative purposes only and should be used as such by any prospective purchaser.
 Created by 1st Image 2026



Three Bedroom Terraced Home | No Forward Chain | Front + Rear Gardens | Ground Floor Cloakroom | Modern Kitchen/Dining Room | Spacious Lounge | Three Good Sized Bedrooms | Modern Family Bathroom | Enclosed Rear Garden With Gate Access | Convenient Location - Close To Amenities | Viewing Highly Advised

Glyn-Jones & Company are pleased to present to the market this three bedroom home situated in the quiet village of Yapton with NO FORWARD CHAIN.

The accommodation comprises entrance hall with ground floor cloakroom leading through to the kitchen/dining room with a re-fitted kitchen. A spacious living room leads out to the rear garden. Upstairs, there are three good sized bedrooms along with a family bathroom.

Externally, the property enjoys both front and rear gardens with ample space for outdoor dining and relaxation. A rear gate provides further access.

WITH OVER...



At an Average rating of **4.9/5** ★★★★★

NOTE - For clarification we wish to inform prospective purchasers that we have prepared these sales particulars as a general guide. We have not carried out a detailed survey nor tested the services, appliances and specific fittings. Room sizes should not be relied upon for carpets and furnishings.



Littlehampton Office
 01903 739000
 littlehampton@glyn-jones.com



At an Average rating of **4.9/5** ★★★★★



Littlehampton Office
 01903 739000
 www.glyn-jones.com

71 Loveys Road, Yapton, Arundel, West Sussex BN18 0HQ

£270,000



Yapton is a well-connected and popular village in West Sussex, offering a blend of rural charm and everyday convenience. Loveys Road is ideally positioned within easy reach of local shops, schools and amenities, while the nearby towns of Arundel and Bognor Regis provide a wider range of shopping, dining and leisure facilities, as well as mainline railway stations with links to London and the south coast. The historic city of Chichester is also within a short drive, offering a vibrant mix of culture, restaurants and boutiques. For those who enjoy the outdoors, the surrounding countryside and nearby coastline provide plenty of opportunities for walking, cycling and seaside pursuits, making this an appealing location for a variety of lifestyles.



Council Tax Band - B
Energy Efficiency Rating - C

We recommend you have this verified by your legal representative at your earliest convenience.



Littlehampton Office
01903 739000
www.glyn-jones.com