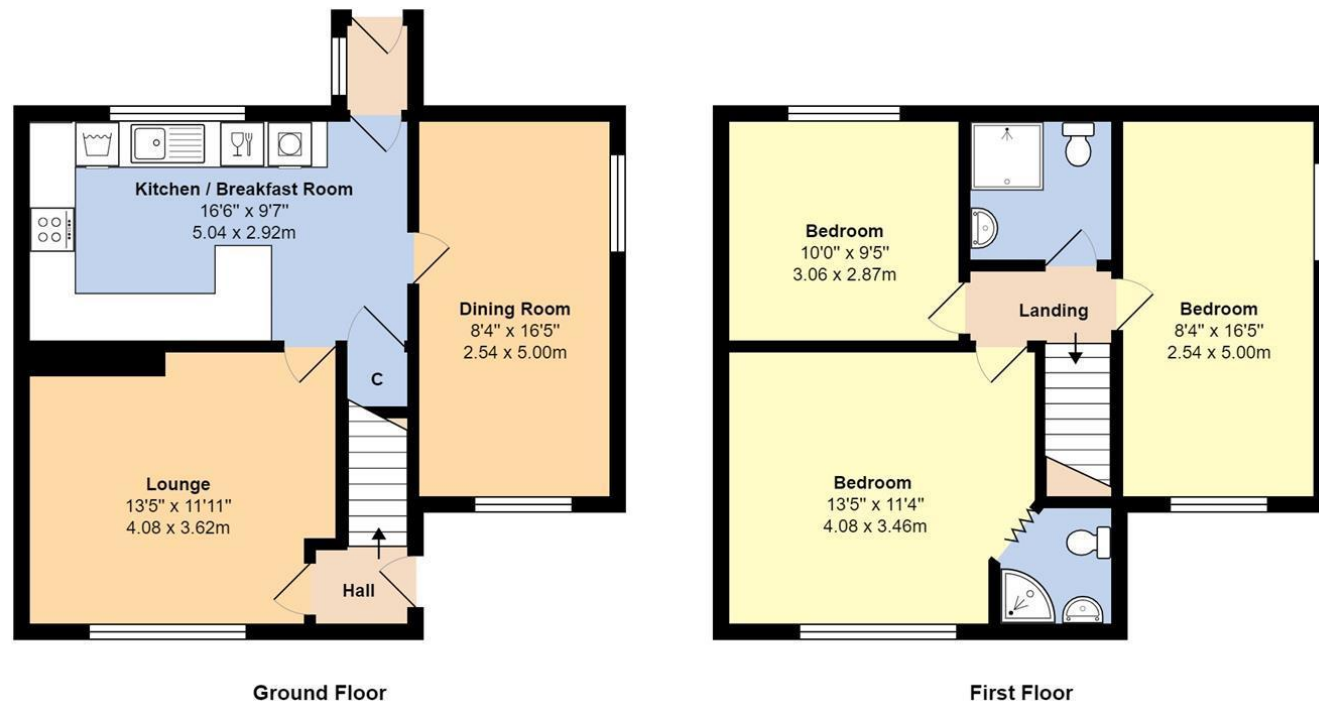


**14 Rodney Crescent, Ford, Arundel,
West Sussex BN18 0DB
£350,000 – Freehold**

Glyn-Jones



Total Area: 1087 ft² ... 101.0 m²

Whilst every attempt has been made to ensure the accuracy of the floor plan contained here, measurements are approximate and no responsibility is taken for error, omission or mis-statement. This plan is for illustrative purposes only and should be used as such by any prospective purchaser. Created by Jtm 2021

AGENTS NOTE: The photos being used were taken prior to current tenancy.



Glyn-Jones & Company are delighted to offer this older style end of terrace house. This particular style is one of the larger style properties on this development.

The accommodation comprises of an entrance hall with stairs to the first floor, door to a lounge which is located to the front with an east facing aspect, further door to the kitchen, with a comprehensive range of fitted unit's, plus a breakfast bar counter top, under stairs storage cupboard and porch to the rear garden. Adjacent to the kitchen there is a double aspect dining room. On the first floor there are three double bedrooms with the main having an en-suite, the family bathroom has an attractive roll top bath with shower over and a wet room floor.

Outside there is a large west facing corner garden with two storage sheds and a patio. There is potential to have a garage in the garden, with access provided from the service road. To the front there is an enclosed garden laid to stones for ease of maintenance.

There is off road parking directly to the rear of the property for several vehicles.

WITH OVER...
500 COMPANY REVIEWS NOW RECEIVED
At an Average rating of **4.9/5** ★★★★★

Glyn-Jones
Littlehampton Office
01903 739000
www.glyn-jones.com



NOTE - For clarification we wish to inform prospective purchasers that we have prepared these sales particulars as a general guide. We have not carried out a detailed survey nor tested the services, appliances and specific fittings. Room sizes should not be relied upon for carpets and furnishings.

14 Rodney Crescent, Ford, Arundel BN18 0DB

£350,000 – Freehold



Situated within a private rural location within Ford, Arundel, which is mid distance of the Historic Arundel and Littlehampton where mainline railway stations can be found.

Arundel offers from a wealth of historic attractions including the castle and Cathedral, as well as delightful boutiques.

Climping is also within 3 miles where the beach front and sand dunes can be found. The property is positioned around a small green with a picturesque outlook.



Property Information

Tenure: Freehold

Energy Efficiency Rating: E

Council Tax Band: C

You are advised to have this confirmed by your legal representative at your earliest opportunity.

