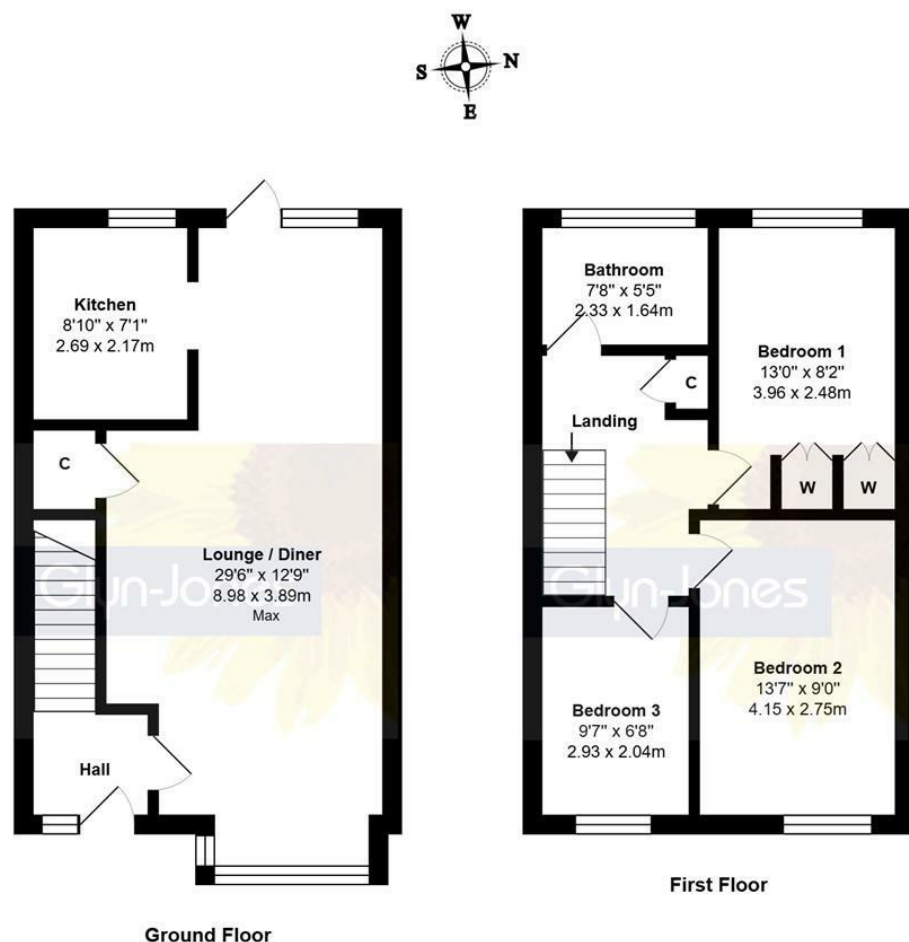


3 Hide Gardens, Rustington BN16 3NP

£295,000 - Freehold



Total Area: 897 ft² ... 83.3 m²

Whilst every attempt has been made to ensure the accuracy of the floor plan contained here, measurements are approximate and no responsibility is taken for error, omission or mis-statement. This plan is for illustrative purposes only and should be used as such by any prospective purchaser. Created by 1st Image 2026

TENURE - Freehold

Council Tax Band: C

Energy Performance Rating: C

AGENTS NOTE - For clarification, we wish to inform prospective purchasers that we have prepared these sales particulars as a general guide. We have not carried out a detailed survey nor tested the services, appliances and specific fittings. Room sizes should not be relied upon for carpets and furnishings.

WITH OVER...



At an Average rating of 4.9/5



Glyn-Jones & Company
Rustington Office Sales
01903 770095
rustington@glyn-jones.com

- Mid-terraced House
- Three Bedrooms
- Kitchen
- Gas Central Heating & Double Glazing
- Popular Location Close to Schools
- NO ONWARD CHAIN
- Spacious Lounge/Dining Room
- Bathroom/WC
- Westerly Facing Rear Garden
- EER: C

Offered for sale with NO ONWARD CHAIN is this deceptively spacious mid-terraced house, situated within a popular residential location, in close proximity to the village centre.

Briefly described, the accommodation comprises; three bedrooms; a generous lounge/dining room; kitchen; and a bathroom/WC.

Outside, there is a well-enclosed rear garden set on a favourable westerly aspect, with secure gated access from the rear; and an open-plan front garden.

Additional benefits include a sizeable entrance hall; gas central heating; double glazing; fitted solar panels (owned); access from the landing to loft storage space.

Hide Gardens is situated most conveniently for Rustington's comprehensive village centre and many of its important local amenities; specifically, two highly regarded community primary schools, Westcourt Medical Centre, and bus stops that run along North Lane.

The picturesque seafront is found in just over 1-mile, whilst Angmering mainline railway station, which affords a regular service to London Victoria via Gatwick, is located in approximately 2-miles distance.

Rustington is centrally situated on the West Sussex Coast almost midway between the cities of Chichester and Brighton, and just south of the A259, which provides a link to the larger neighbouring towns of Bognor Regis and Worthing.

AGENT'S NOTE: Interior and garden photos will be added shortly.



At an Average rating of 4.9/5



Glyn-Jones & Company
Rustington
01903 770095

3 Hide Gardens, Rustington, West Sussex, BN16 3NP

WITH OVER...  COMPANY REVIEWS At an Average rating of  4.9/5  **Glyn-Jones & Company**
Rustington
01903 770095