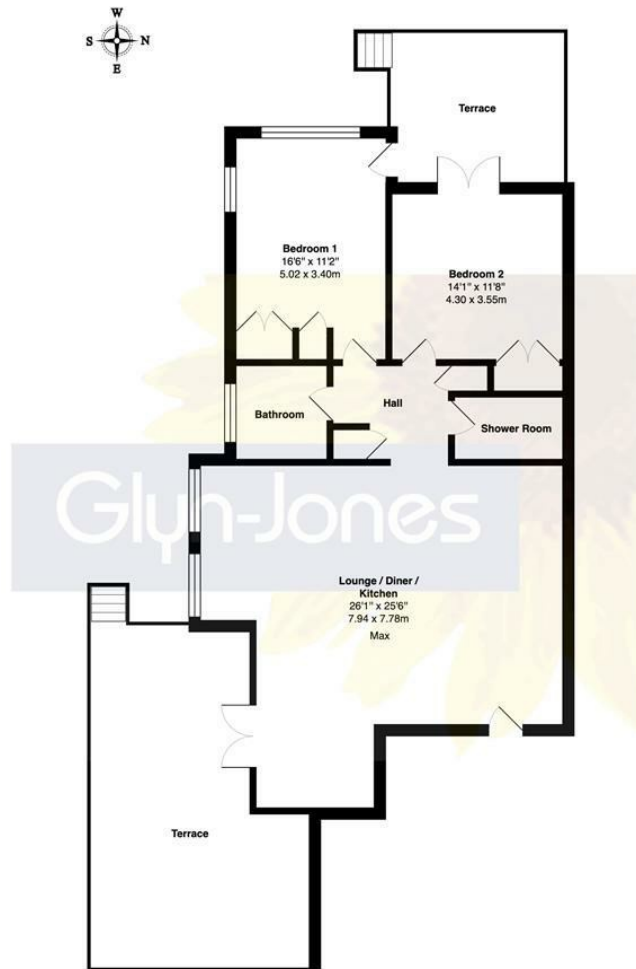


98A Sea Avenue, Sea Estate Rustington BN16 2DL

£650,000 - Leasehold - Share of



Total Area: 1088 ft² ... 101.1 m² (excluding terrace)
 Whilst every attempt has been made to ensure the accuracy of the floor plan contained here, measurements are approximate and no responsibility is taken for error, omission or mis-statement.
 This plan is for illustrative purposes only and should be used as such by any prospective purchaser.
 Created by 1st Image 2026

TENURE - Leasehold - Share of Freehold

Council Tax Band: F

Energy Performance Rating: C

AGENTS NOTE - For clarification, we wish to inform prospective purchasers that we have prepared these sales particulars as a general guide. We have not carried out a detailed survey nor tested the services, appliances and specific fittings. Room sizes should not be relied upon for carpets and furnishings.

WITH OVER...



At an Average rating of **4.9/5** ★★★★★



Glyn-Jones & Company
 Rustington Office Sales
 01903 770095
 rustington@glyn-jones.com

- Stunning Ground Floor Apartment
- 26 x 25 Open Plan Living Room
- 2 Double Bedrooms - 2 Bathrooms
- Private Wrap Around Garden
- Private Sea Estate
- Prestigious Gated Development
- Quality Fitted Kitchen with Appliances
- Underfloor Heating and Double Glazing
- Secure Underground Parking
- Viewing Highly Recommended

Purpose Built Apartment | Southerly Garden with Outbuildings | Contemporary Open Plan Living | High Quality Fitted Kitchen | Two Bedrooms with Wardrobes | Two bathrooms | Covered Parking with Lift Access | Share of Freehold | Viewing Essential



At an Average rating of **4.9/5** ★★★★★



Glyn-Jones & Company
 Rustington
 01903 770095

1 Alderney Court, 98A Sea Avenue, Sea Estate, Rustington, West Sussex, BN16 2DL

