

FREEHOLD



House - Semi-Detached

20 MEADOW WAY,  
WESTERGATE,  
CHICHESTER, PO20  
3QT

Guide Price

£379,950

#### FEATURES

- SEMI-DETACHED HOME WITH VIEWS
- TWO BATHROOMS
- LARGE LOUNGE/DINER WITH FEATURE LOG BURNER
- TWO DOUBLE BEDROOMS
- MODERN FITTED KITCHEN
- CONSERVATORY

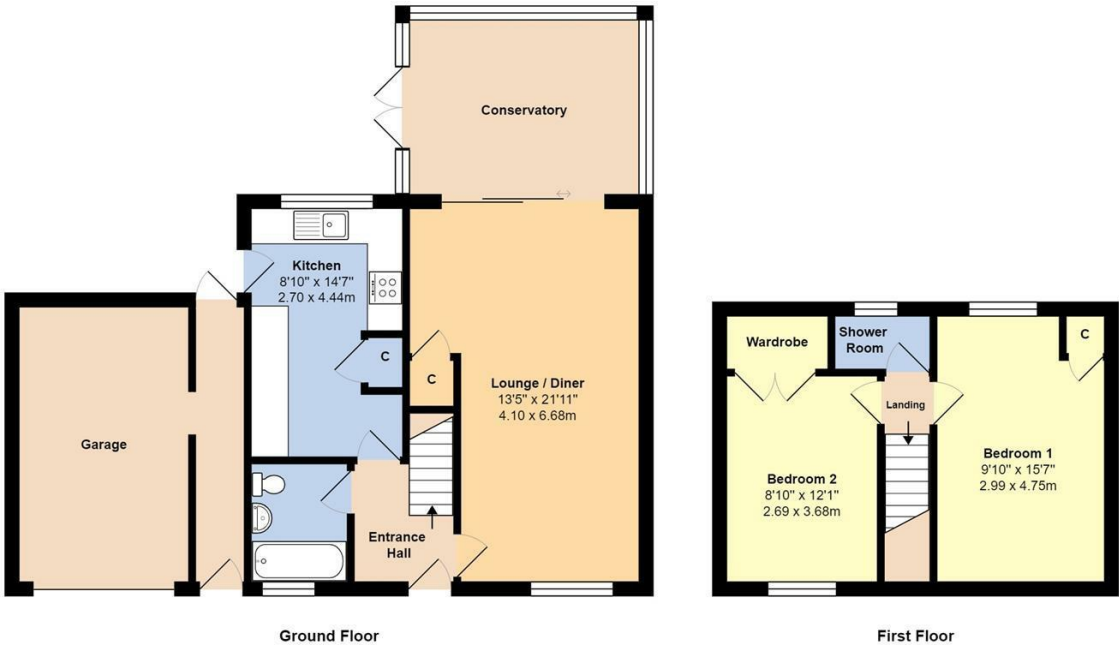


# 2 Bedroom House - Semi-Detached located in Chichester

SALE AGREED WITHIN 24 HOURS | Semi-Detached House | Fabulous Farmland Views | Two Double Bedrooms | Lounge/Diner With Feature Wood Burner | Modern Fitted Kitchen | Modern Bathroom | Shower Room | Conservatory | Large Driveway For Several cars | Garage/Store | Lovely Mature Rear Gardens With Fabulous Views | Viewing Advised |

Call us on  
**01243 271281**  
**yapton@glyn-jones.com**

Council Tax Band



Total Area: 807 ft² ... 75.0 m² (Excludes Garage & Conservatory)

Whilst every attempt has been made to ensure the accuracy of the floor plan contained here, measurements are approximate and no responsibility is taken for error, omission or mis-statement.  
This plan is for illustrative purposes only and should be used as such by any prospective purchaser.  
Created by Jlm 2022

Energy Efficiency Rating		
	Current	Potential
Very energy efficient - lower running costs		
(92 plus) <b>A</b>		
(81-91) <b>B</b>		
(69-80) <b>C</b>		
(55-68) <b>D</b>		
(39-54) <b>E</b>		
(21-38) <b>F</b>		
(1-20) <b>G</b>		
Not energy efficient - higher running costs		
England & Wales		EU Directive 2002/91/EC

Agents Note: Whilst every care has been taken to prepare these particulars, they are for guidance purposes only. All measurements are approximate and are for general guidance purposes only and whilst every care has been taken to ensure their accuracy, they should not be relied upon and potential buyers are advised to recheck the measurements.

