

  
**PROMINENCE**  
ESTATES



**RESIDENTIAL**  
PROPERTY EXPERTS

COVENTRY, WARWICKSHIRE  
& LEAMINGTON SPA

**SIR HENRY PARKES ROAD,**  
CANLEY, COVENTRY, CV5 6BL

**£600 PER MONTH**

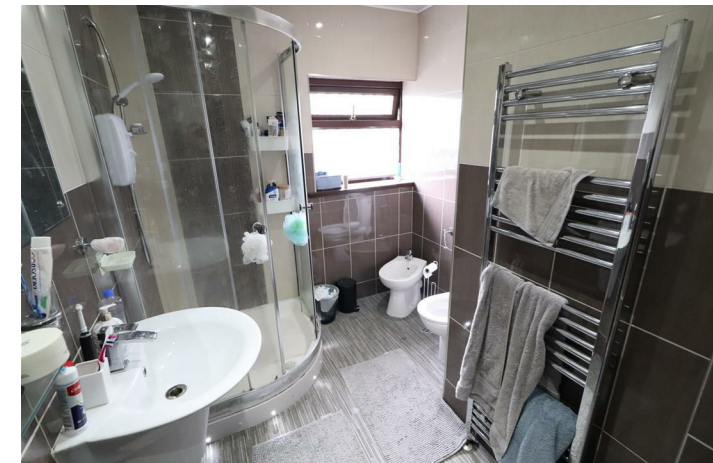
SIR HENRY PARKES ROAD

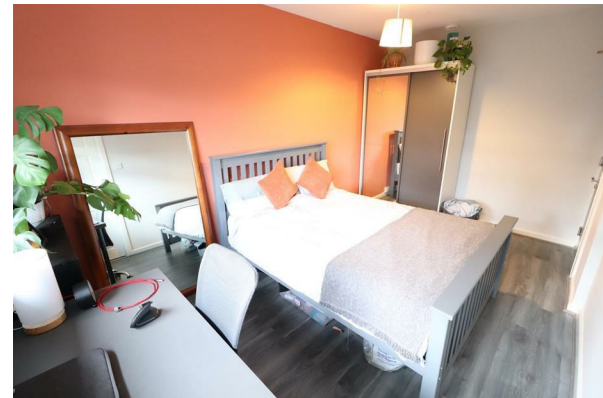


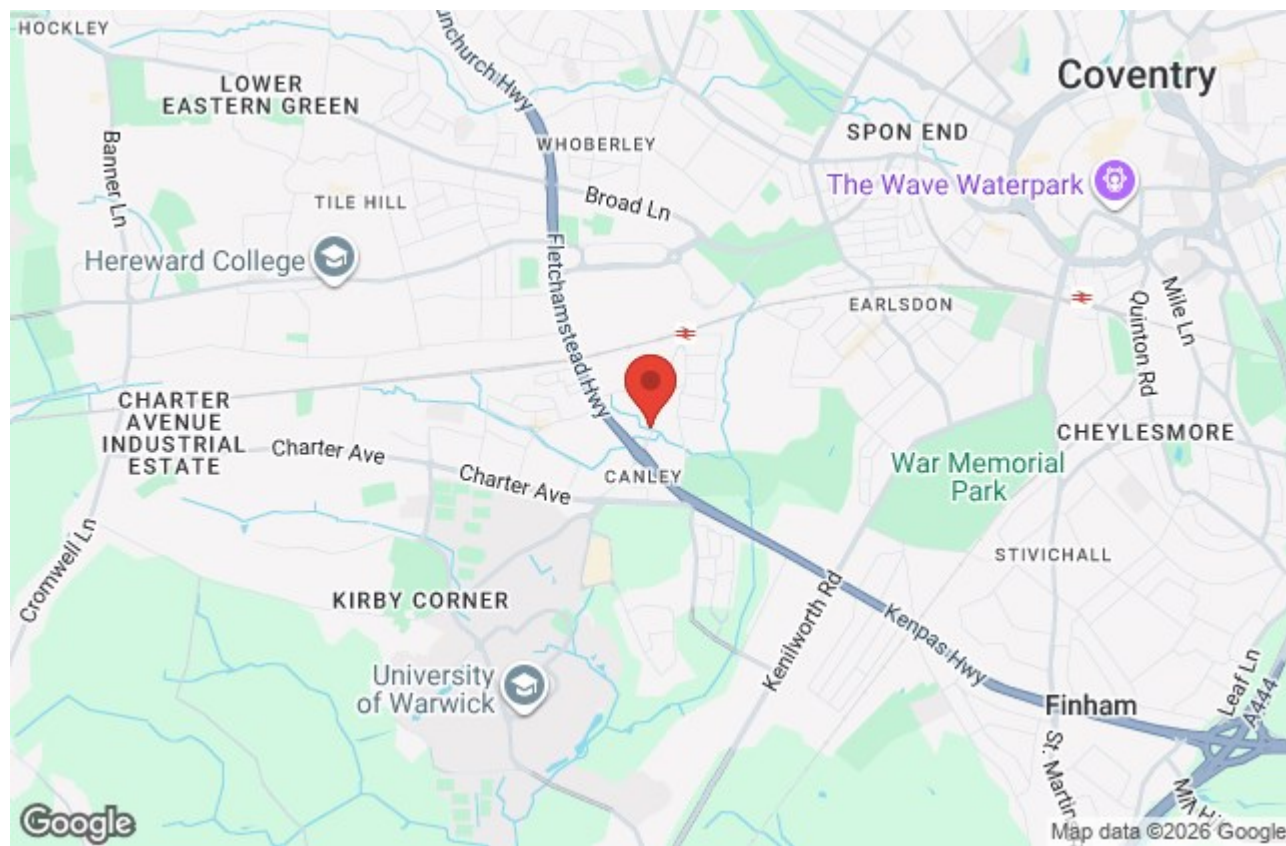
**PROMINENCE**  
ESTATES

En-Suite Room available in a 4 bedroom student property presents a convenient and desirable living option within walking distance to both Warwick University and Cannon Retail Park. Boasting two en-suite rooms for added privacy and comfort, along with one shared bathroom for the remaining two bedrooms, this accommodation offers a balanced mix of personal space and communal facilities. Ideal for students seeking convenience and accessibility, the property's proximity to academic institutions and retail amenities ensures a comfortable and practical living experience.

To Arrange a viewing please call 02476309826







Prominence Estates  
5 Queen Isabels Avenue,  
Cheylesmore,  
Coventry,  
CV3 5GE

02476 309 826  
lettings@prominenceestates.com  
www.prominenceestates.com

  
**PROMINENCE**  
ESTATES