



PROMINENCE
ESTATES



RESIDENTIAL
PROPERTY EXPERTS

COVENTRY, WARWICKSHIRE
& LEAMINGTON SPA

ROBIN CLOSE,
COVENTRY, CV4 8NJ

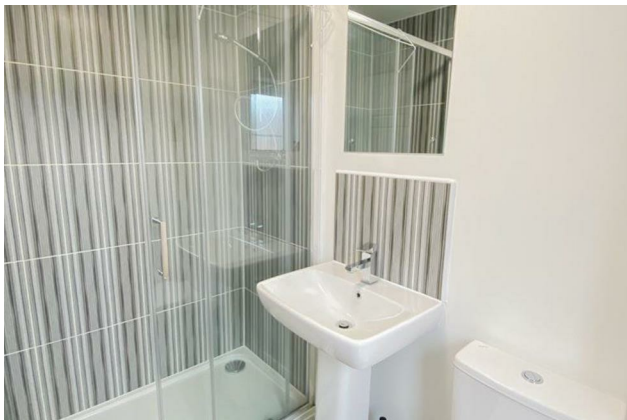
£3,250 PCM

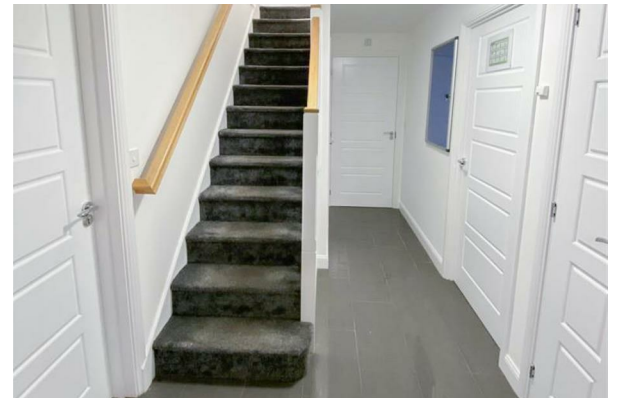
ROBIN CLOSE

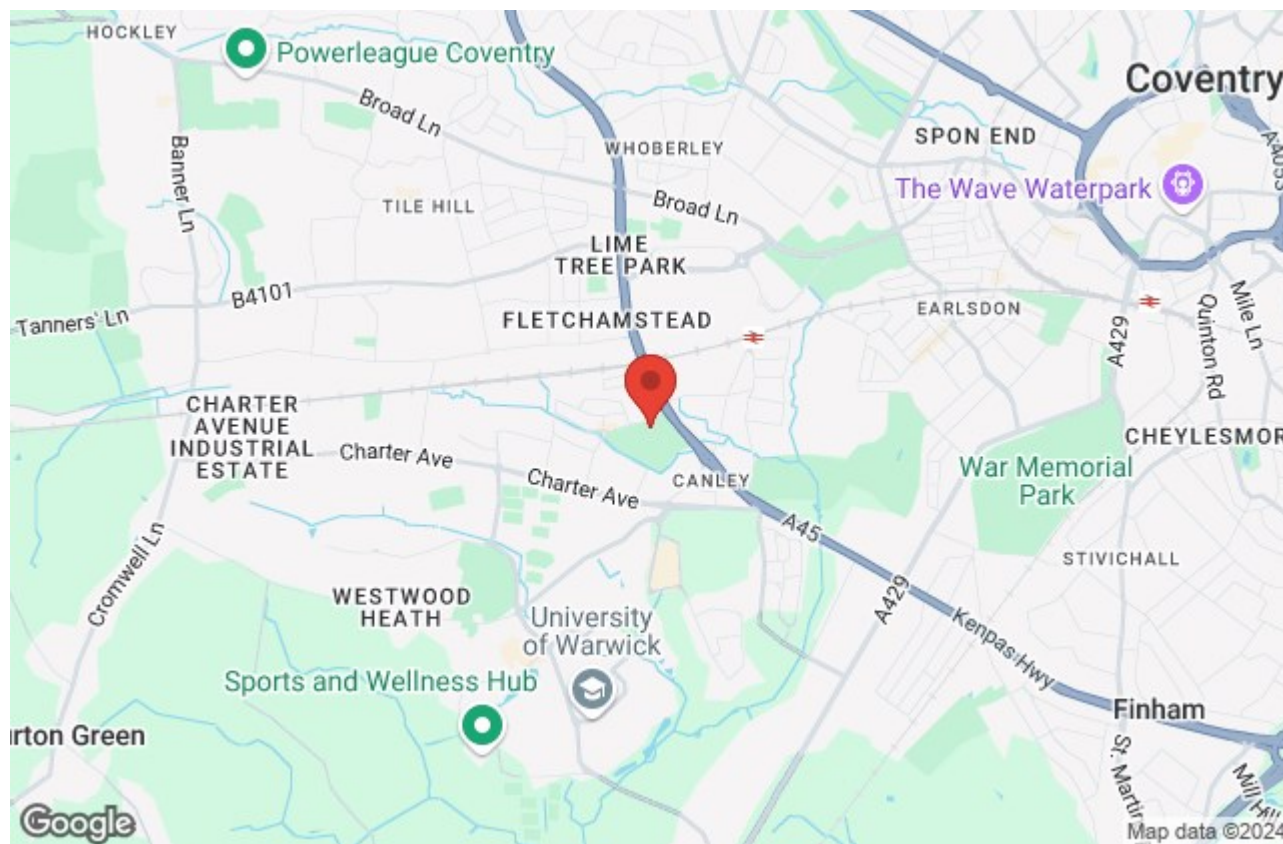


PROMINENCE
— ESTATES —

**** AVAILABLE SEPTEMBER 2025**** Luxury new build house with 5 large double bedrooms within walking distance to Warwick University. This amazing property benefits from off road parking. In brief the property comprises; entrance hallway, open plan kitchen/dining area with doors leading out into the large well maintained garden. Large ground floor en-suite bedroom, to the first floor there are 2 good sized en-suite bedrooms and on the second floor a further two bedrooms with use of a shared bathroom.







Prominence Estates
5 Queen Isabels Avenue,
Cheylesmore,
Coventry,
CV3 5GE

02476 309 826
sales@prominenceestates.com
www.prominenceestates.com


PROMINENCE
— ESTATES —