


PROMINENCE
ESTATES



RESIDENTIAL
PROPERTY EXPERTS

COVENTRY, WARWICKSHIRE
& LEAMINGTON SPA

GRETN A ROAD,
FINHAM, COVENTRY, CV3 6DP

£1,325 PER CALENDAR

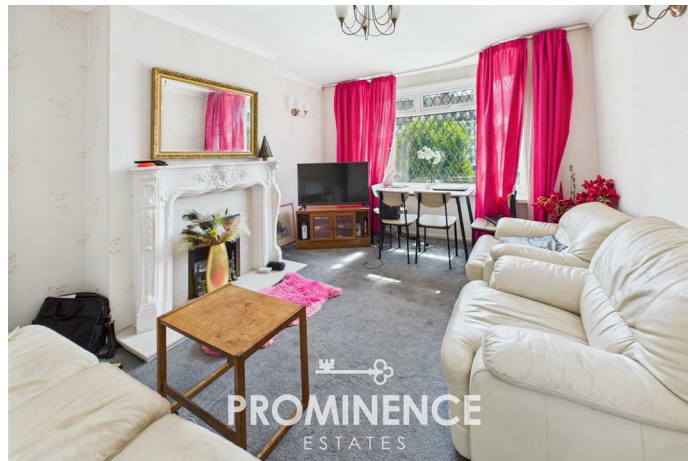
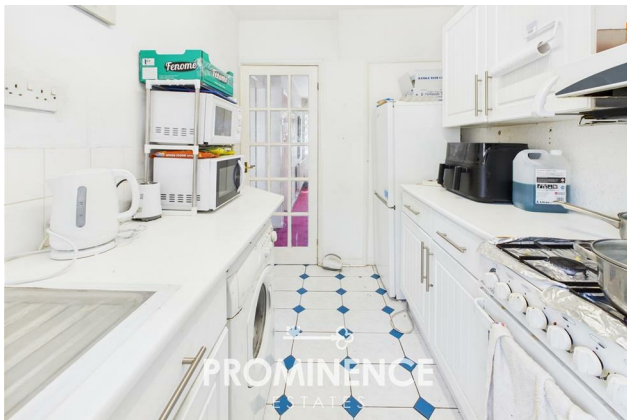
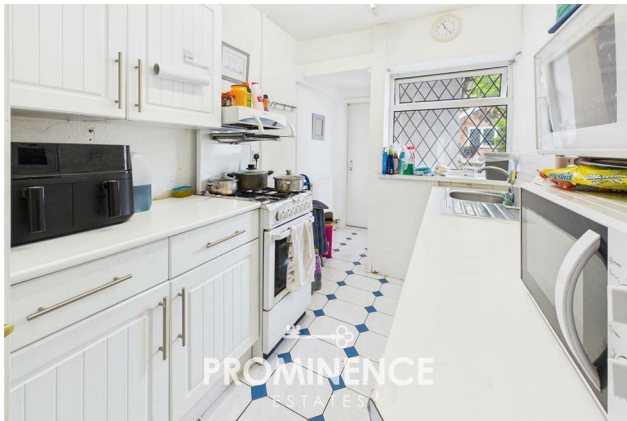
GRETNA ROAD

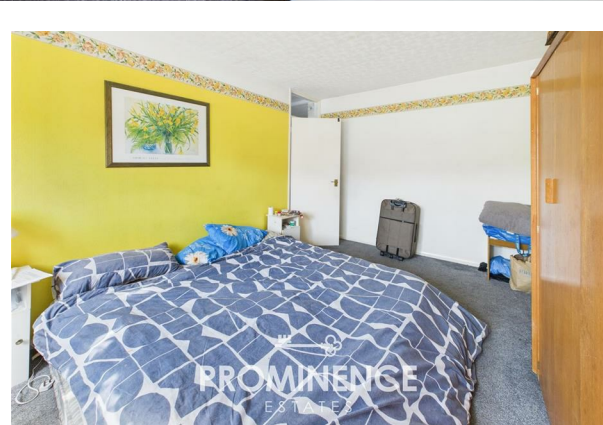
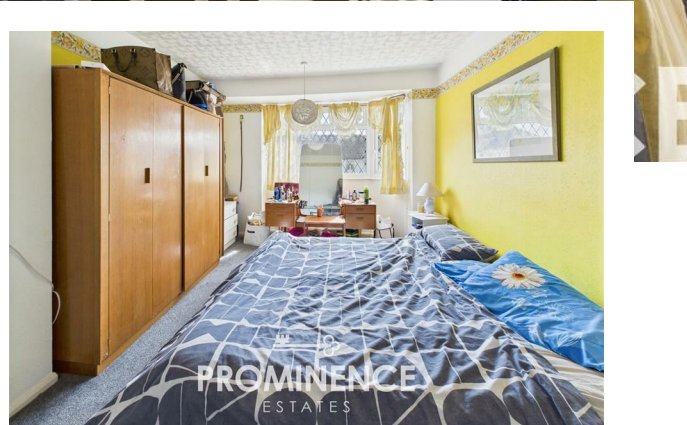
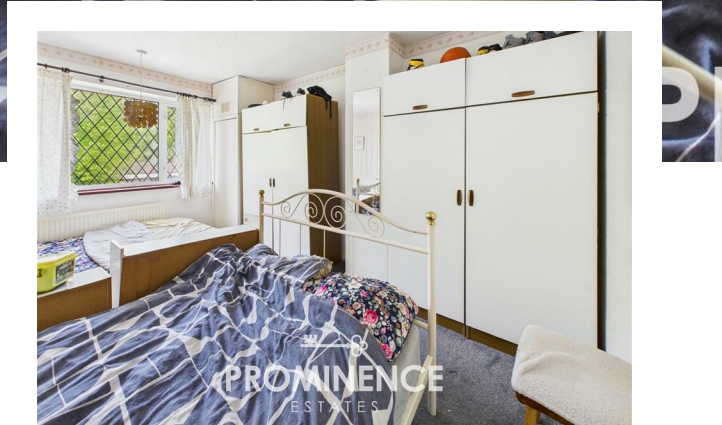


PROMINENCE
ESTATES

Located in the highly desirable Finham area, this well-maintained 3-bedroom terraced home offers generous living space ideal for families or professionals. The property features a large living room, a separate dining room with patio doors opening onto a lovely private garden, a ground-floor bathroom, and an additional bathroom upstairs. All three bedrooms are well-proportioned and filled with natural light.

Situated within walking distance of highly rated local schools, including Finham Park School and Stivichall Primary, and close to green spaces like Finham Park and War Memorial Park. Local shops, supermarkets, and eateries are nearby, with excellent transport links via A45 and easy access to Coventry city centre and the University of Warwick.

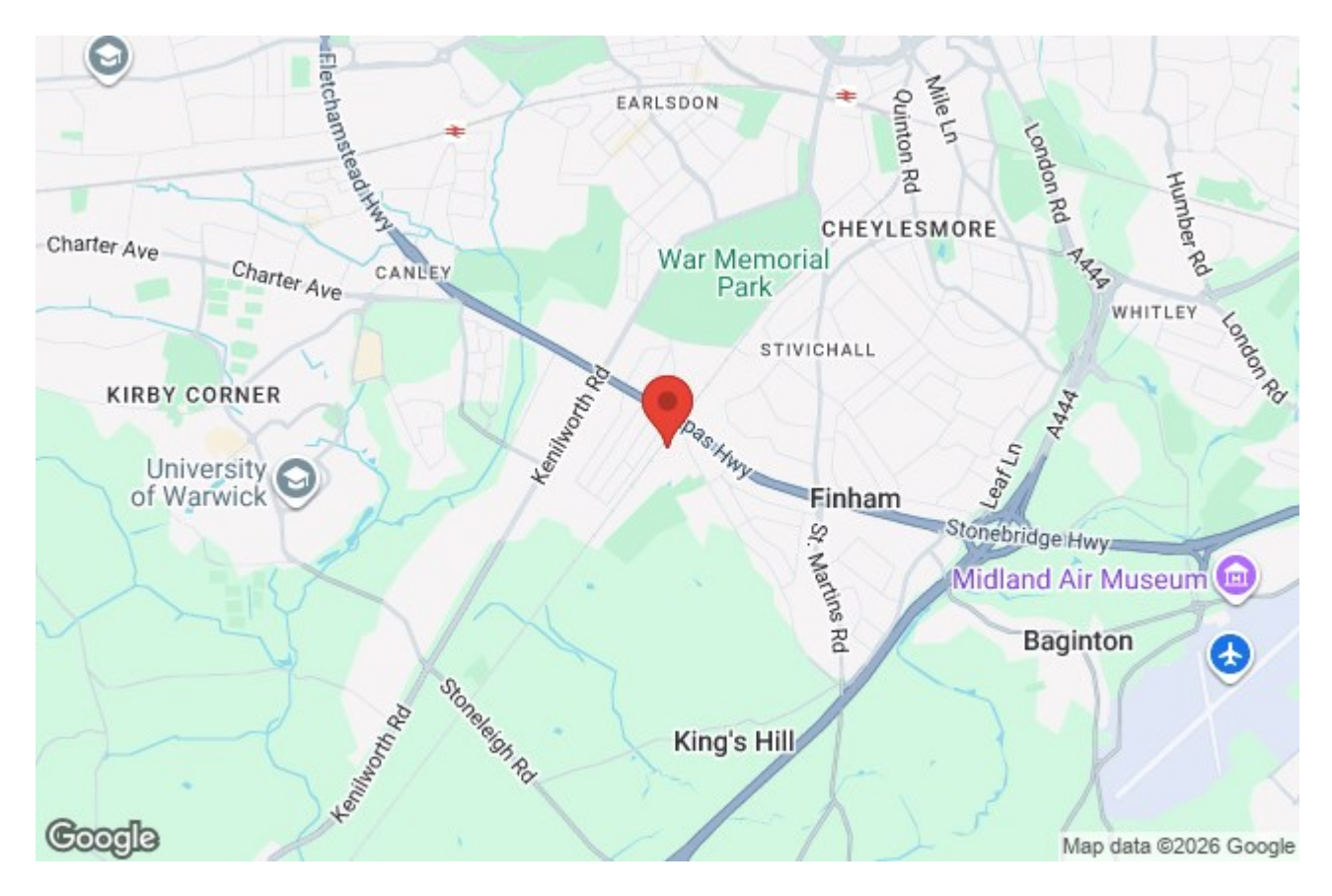




PROMINENCE
ESTATES

PROMINENCE
ESTATES

PROMINENCE
ESTATES



Prominence Estates
5 Queen Isabels Avenue,
Cheylesmore,
Coventry,
CV3 5GE

02476 309 826
lettings@prominenceestates.com
www.prominenceestates.com


PROMINENCE
ESTATES