

  
**PROMINENCE**  
ESTATES



**RESIDENTIAL**  
PROPERTY EXPERTS

COVENTRY, WARWICKSHIRE  
& LEAMINGTON SPA

**SIR HENRY PARKES ROAD,**  
CANLEY, COVENTRY, CV4 8GG

**£695 PER CALENDAR**

SIR HENRY PARKES ROAD



  
**PROMINENCE**  
— ESTATES —

Experience convenient and comfortable student living with this charming en-suite student property available for rent. \*\* ALL BILLS INCLUDED\*\* Located in close proximity to Warwick University and essential amenities, this well-designed residence offers a perfect balance of privacy, community, and modern amenities, catering specifically to the needs of students.

Ideal for students, this en-suite property combines practicality with a warm and inviting ambiance. The bedroom comes fully furnished with a private bathroom, providing a personal space for focused study and relaxation. The thoughtfully arranged interiors ensure a seamless blend of comfort and functionality.

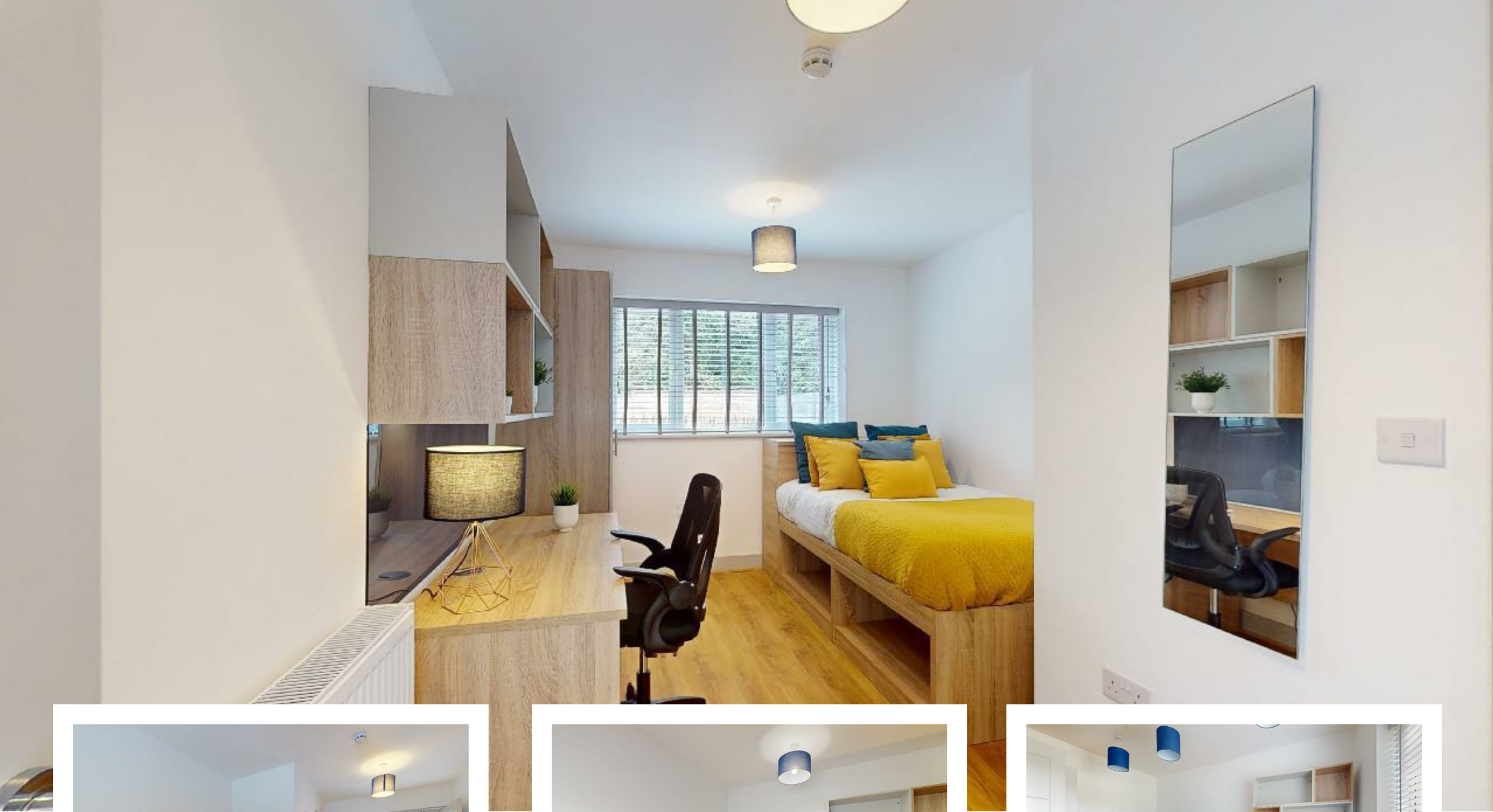
Shared Common Areas: Along with the en-suite, students have access to shared common areas

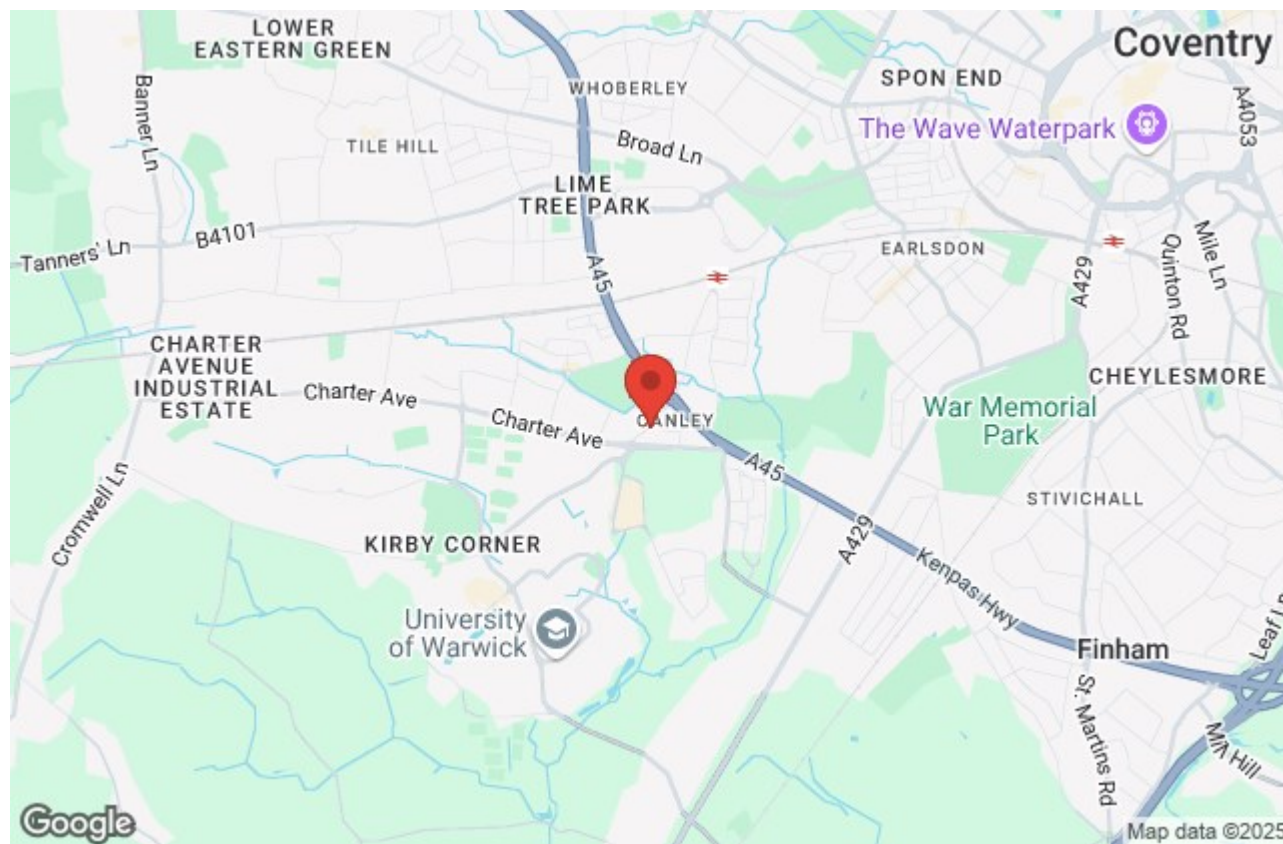
such as a communal kitchen and a lounge space, perfect for socializing and building connections.

To Arrange a viewing please call Prominence Estates on 02476 309 826









Prominence Estates  
5 Queen Isabella Avenue,  
Cheylesmore,  
Coventry,  
CV3 5GE

02476 309 826  
[lettings@prominenceestates.com](mailto:lettings@prominenceestates.com)  
[www.prominenceestates.com](http://www.prominenceestates.com)

  
**PROMINENCE**  
— ESTATES —