


PROMINENCE
ESTATES



RESIDENTIAL
PROPERTY EXPERTS

COVENTRY, WARWICKSHIRE
& LEAMINGTON SPA

SIR HENRY PARKES ROAD,
CANLEY, COVENTRY, CV4 8GG

£2,350 PCM

SIR HENRY PARKES ROAD

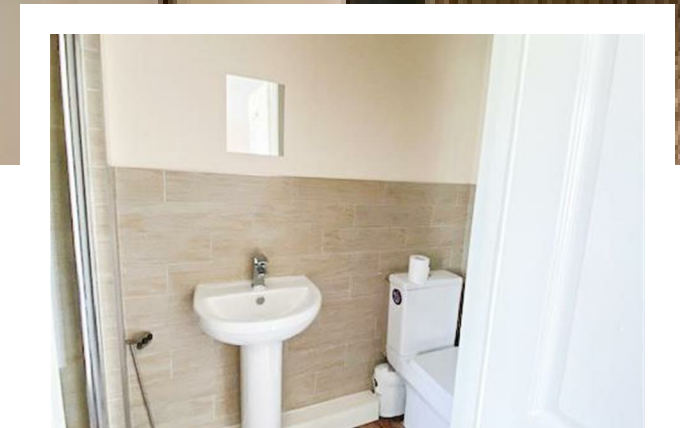
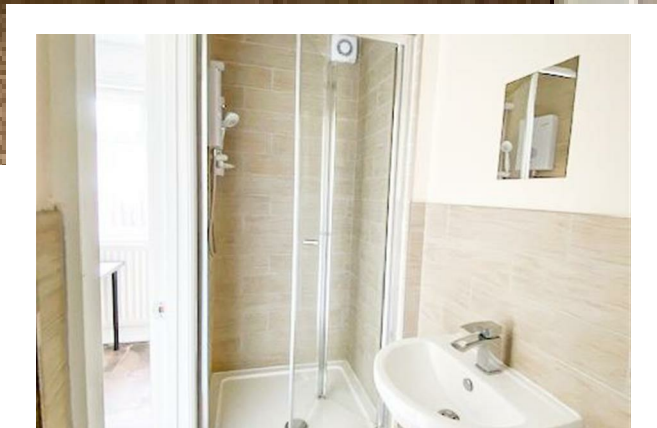
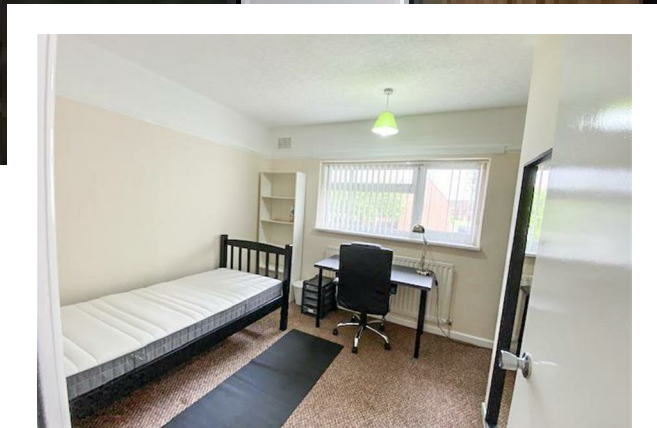


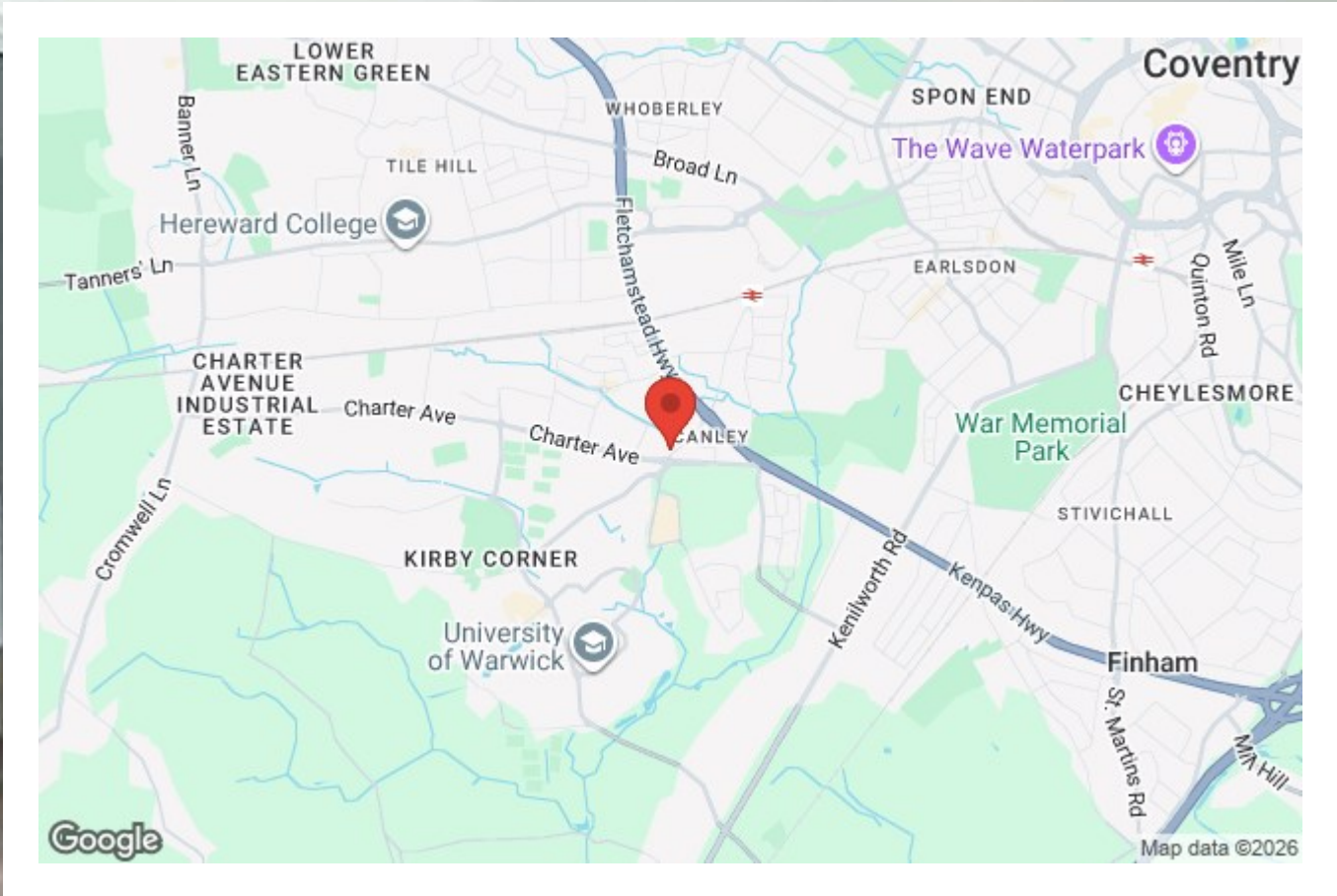
PROMINENCE
ESTATES

**** Available From September 2026**** Five Bedroom Student House Perfect For Warwick University Students, Located Only a Short Walk to University. In brief the property comprises of; entrance hall, ground floor bedroom with ensuite, kitchen and living room, four other bedrooms and a separate bathroom. The property must be viewed to be appreciated.

Bills inclusive option available through Uni homes. To find out more information please contact Prominence Estates on 02476309826







Prominence Estates
5 Queen Isabels Avenue,
Cheylesmore,
Coventry,
CV3 5GE

02476 309 826
lettings@prominenceestates.com
www.prominenceestates.com


PROMINENCE
ESTATES