


PROMINENCE
ESTATES



RESIDENTIAL
PROPERTY EXPERTS

COVENTRY, WARWICKSHIRE
& LEAMINGTON SPA

BEAUCHAMP HOUSE,
CITY CENTRE, COVENTRY, CV1 3RX

£1,200 PCM

BEAUCHAMP HOUSE

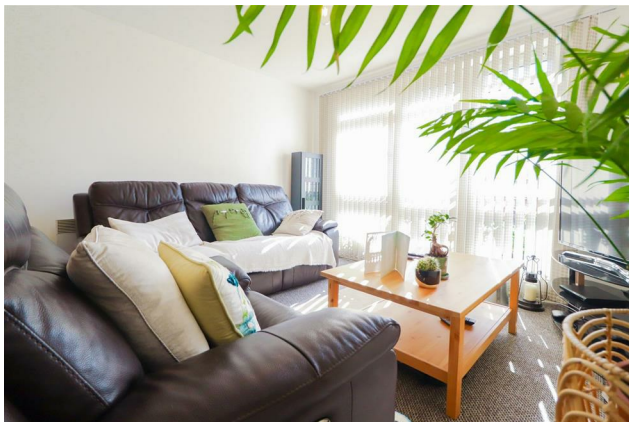


PROMINENCE

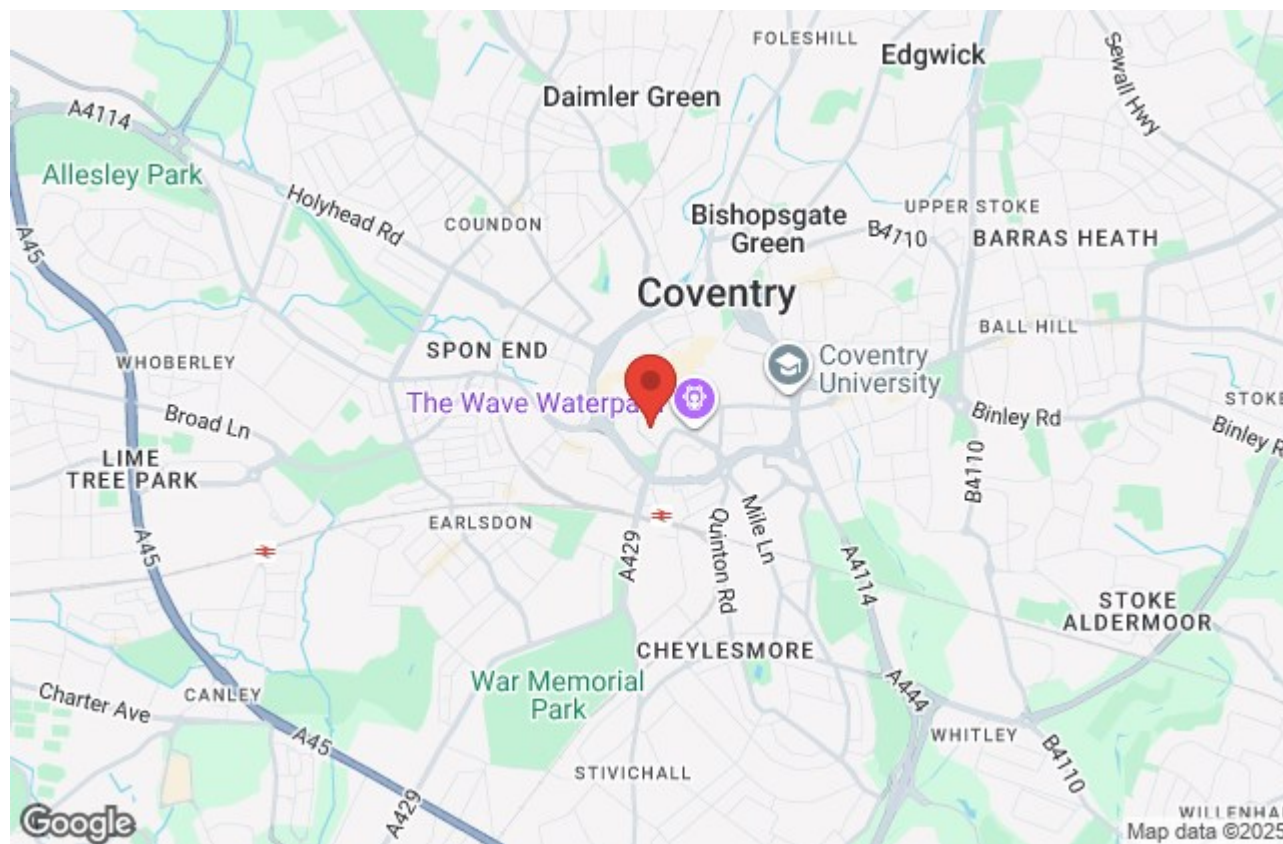
— ESTATES —

Spacious 2 Bedroom City Centre Apartment With Large En-Suite Bedroom. This amazing 2 bedroom apartment has secure gated access and also benefits from secure underground parking. In brief the apartment comprises; entrance hallway, open plan lounge and kitchen, double bedroom with en-suite, second double bedroom with use of a separate large bathroom. The apartment comes fully furnished, and ready to move in. Kitchen appliances and white goods include, fridge/freezer, washing machine and microwave. The living room also benefits from sofa's and a dining table.

Located in the heart of Coventry City Centre this apartment is close to all local amenities including, retail shops, restaurants, markets and convenience stores. Within walking distance to Coventry train station and local bus routes.







Prominence Estates
5 Queen Isabels Avenue,
Cheylesmore,
Coventry,
CV3 5GE

02476 309 826
lettings@prominenceestates.com
www.prominenceestates.com


PROMINENCE
— ESTATES —