


PROMINENCE
ESTATES



RESIDENTIAL
PROPERTY EXPERTS

COVENTRY, WARWICKSHIRE
& LEAMINGTON SPA

THE EARLS CROFT,
COVENTRY, CV3 5ES

£1,700 PER CALENDAR

THE EARLS CROFT



PROMINENCE
— ESTATES —

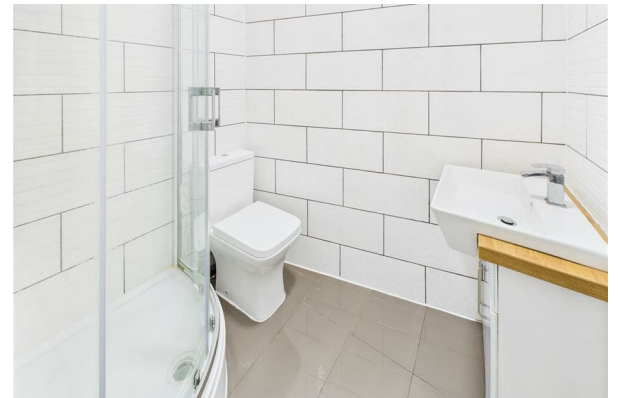
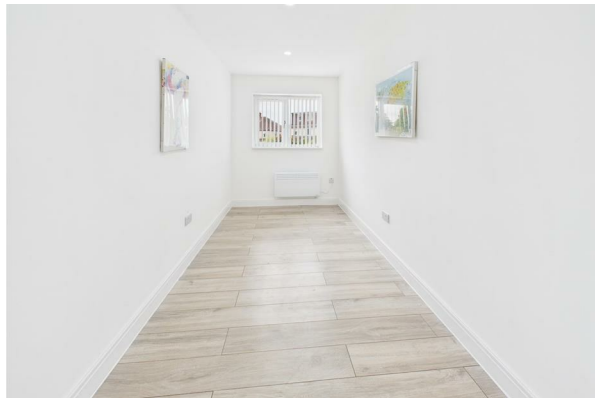
Located in a quiet cul-de-sac in the desirable area of Cheylesmore, this beautifully presented four-bedroom semi-detached home offers generous and flexible living space perfect for modern family life and remote working. The property features four well-proportioned bedrooms, along with two additional rooms on the ground floor that are ideal for use as home offices, providing excellent flexibility for professionals or those working from home.

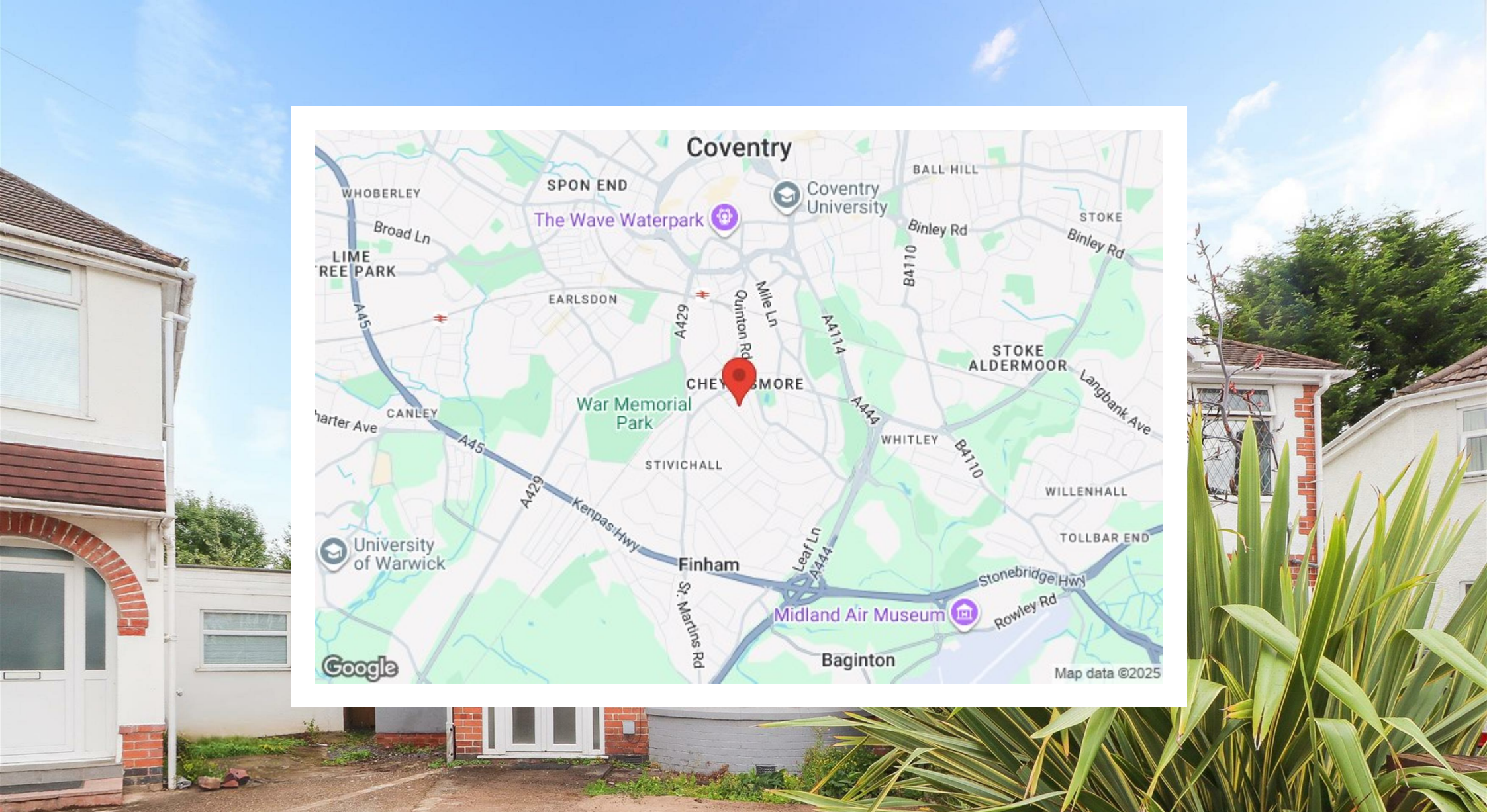
Outside, the property benefits from a large private garden, offering plenty of room for children to play or to enjoy the outdoors. The driveway provides off-road parking for two cars. The home also benefits from gas central heating and double glazing throughout.

With excellent access to local amenities, schools, and transport links, this property is perfectly situated for convenience while still offering a peaceful, family-friendly setting. This is a fantastic opportunity to secure a versatile and spacious home in a sought-after location.

The house includes three modern bathrooms, one of which is an en-suite to the master bedroom. At the heart of the home is a spacious open-plan kitchen and dining area, ideal for entertaining guests or enjoying family meals. A separate living room provides a warm and inviting space to relax.







Prominence Estates
5 Queen Isabels Avenue,
Cheylesmore,
Coventry,
CV3 5GE

02476 309 826
lettings@prominenceestates.com
www.prominenceestates.com


PROMINENCE
— ESTATES —