



**PROMINENCE**  
ESTATES



**RESIDENTIAL**  
PROPERTY EXPERTS

COVENTRY, WARWICKSHIRE  
& LEAMINGTON SPA

**SIR HENRY PARKES ROAD,**  
CANLEY, COVENTRY, CV4 8GG

**£2,250 PCM**

SIR HENRY PARKES ROAD



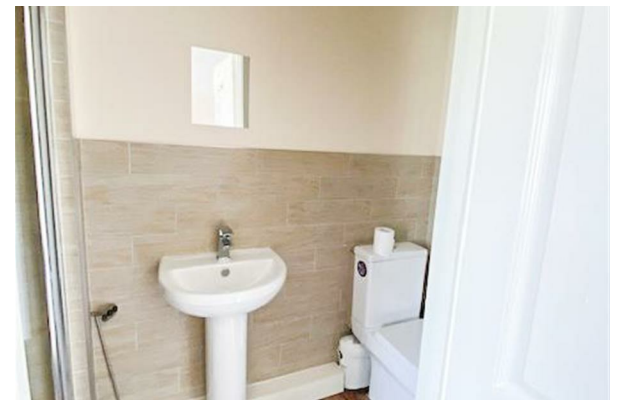
**PROMINENCE**  
— ESTATES —

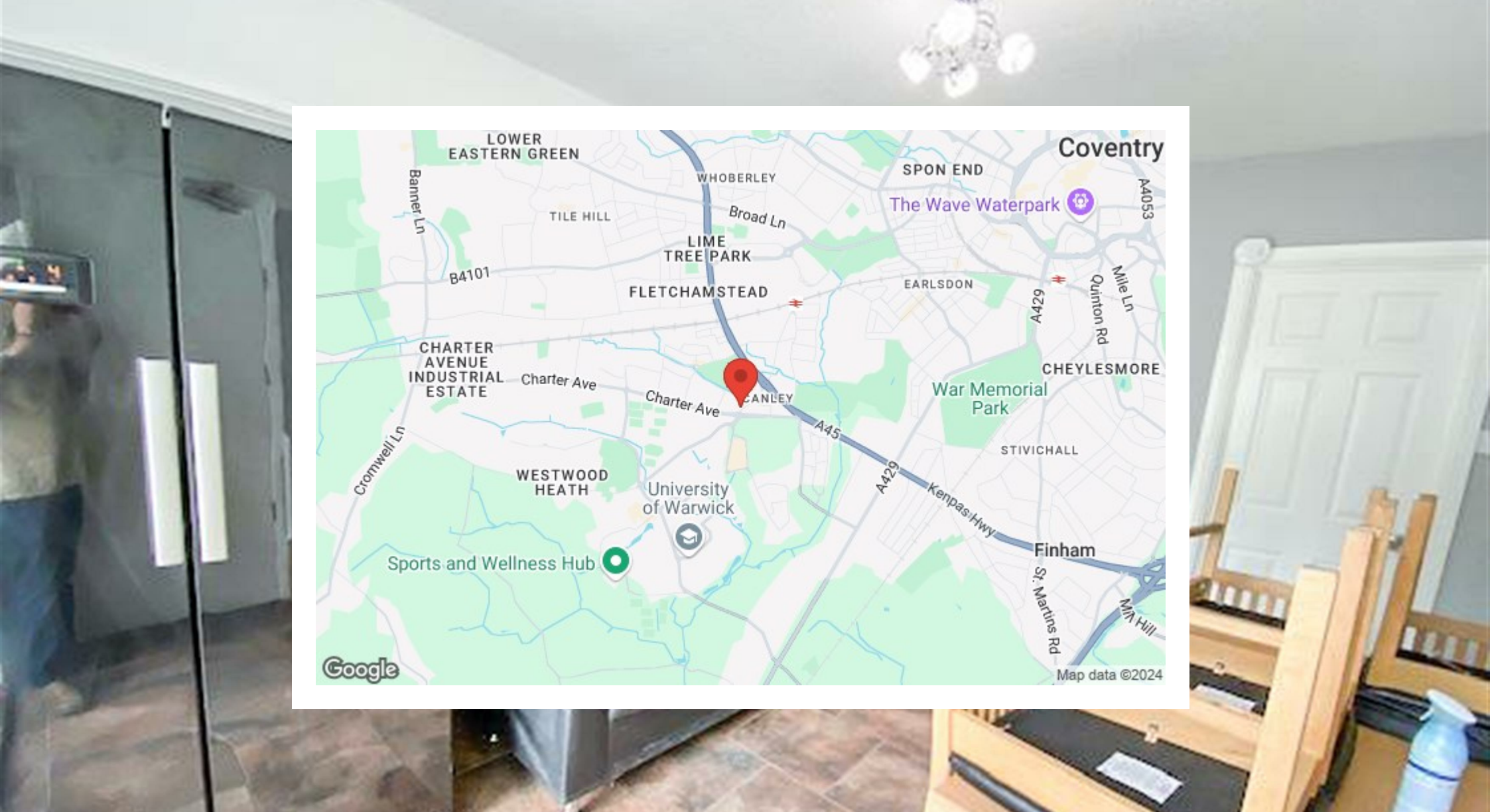
**\*\* Available From September 2025\*\*** Five Bedroom Student House Perfect For Warwick University Students, Located Only a Short Walk to University. In brief the property comprises of; entrance hall, ground floor bedroom with en-suite, kitchen and living room, four other bedrooms and a separate bathroom. The property must be viewed to be appreciated.

Bills inclusive option available through Uni homes. To find out more information please contact Prominence Estates on 02476309826









Prominence Estates  
5 Queen Isabella Avenue,  
Cheylesmore,  
Coventry,  
CV3 5GE

02476 309 826  
[sales@prominenceestates.com](mailto:sales@prominenceestates.com)  
[www.prominenceestates.com](http://www.prominenceestates.com)

  
**PROMINENCE**  
— ESTATES —