

  
**PROMINENCE**  
ESTATES



**RESIDENTIAL**  
PROPERTY EXPERTS

COVENTRY, WARWICKSHIRE  
& LEAMINGTON SPA

**CHAFFINCH ROAD,**  
COVENTRY, CV4 8NG

CHAFFINCH ROAD

**£2,700 PER CALENDAR**

## CHAFFINCH ROAD

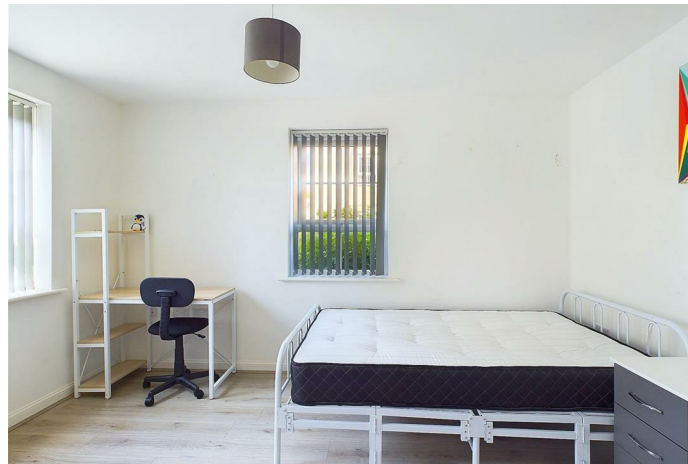
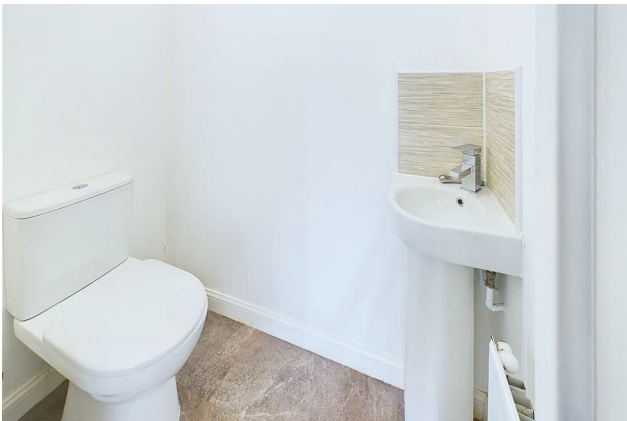


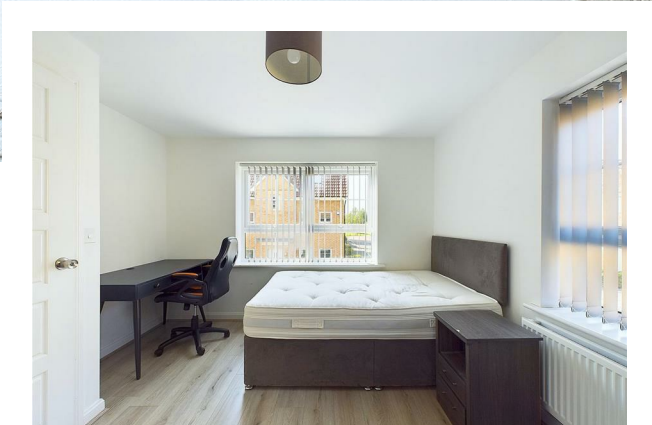
# PROMINENCE

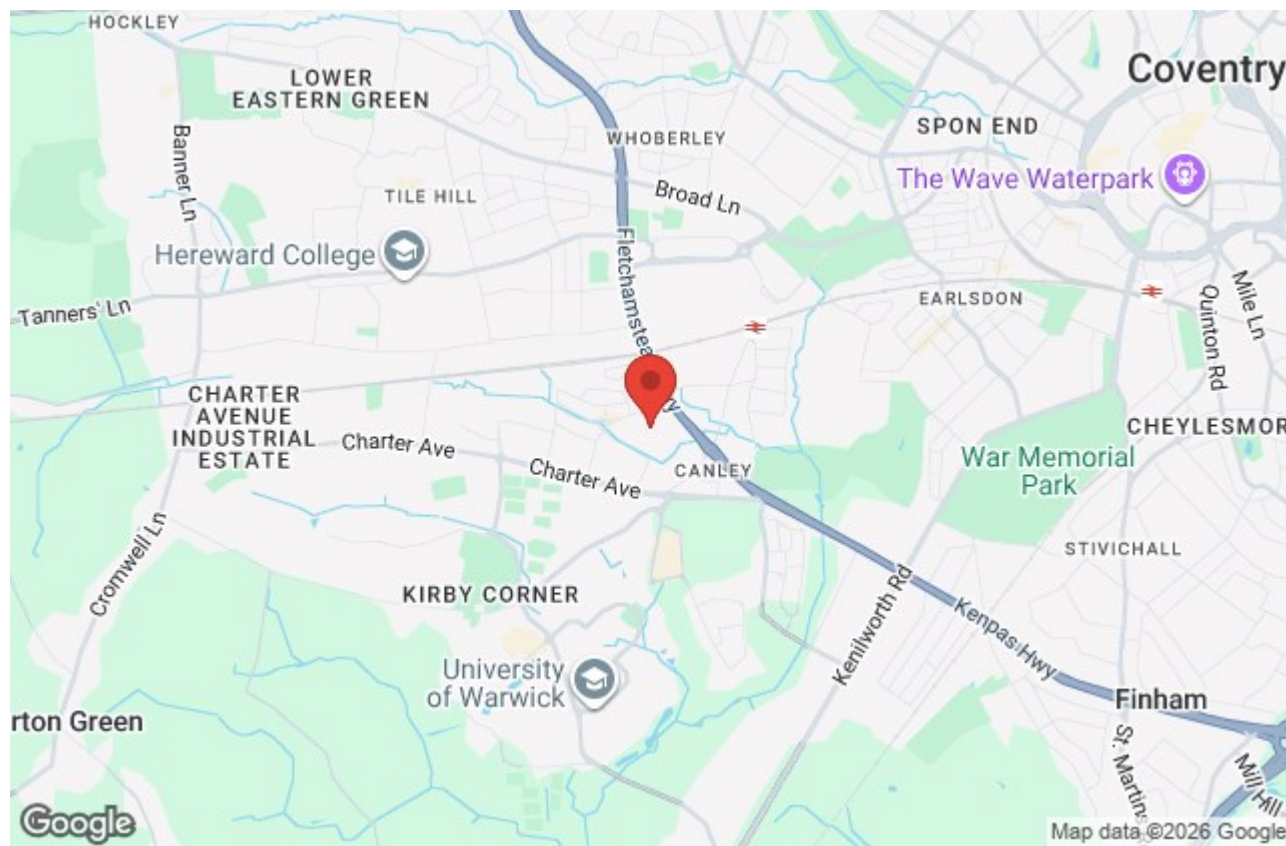
ESTATES

**\*\* AVAILABLE SEPTEMBER 2026\*\*** Well-presented and modern 5 bedroom property located in a new development - Within walking distance to Warwick University. In brief, the property comprises; entrance hallway, ground floor WC, spacious and modern open plan kitchen/living room with french doors leading out into the large well-maintained garden. On the ground floor there is an spacious bedroom, to the first floor there are a two bedrooms with a shared bathroom, and on the second floor follows two spacious bedrooms with another shared bathroom.

Bills inclusive option available through Uni homes. To find out more information please contact Prominence Estates on 02476309826







Prominence Estates  
5 Queen Isabels Avenue,  
Cheylesmore,  
Coventry,  
CV3 5GE

02476 309 826  
lettings@prominenceestates.com  
www.prominenceestates.com

  
**PROMINENCE**  
ESTATES