

  
**PROMINENCE**  
ESTATES



**RESIDENTIAL**  
PROPERTY EXPERTS

COVENTRY, WARWICKSHIRE  
& LEAMINGTON SPA

**COUNDON ROAD,**  
COVENTRY, CV1 4AR

**£845 PER CALENDAR**

# COUNDON ROAD



# PROMINENCE

ESTATES

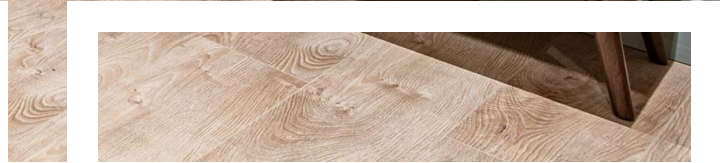
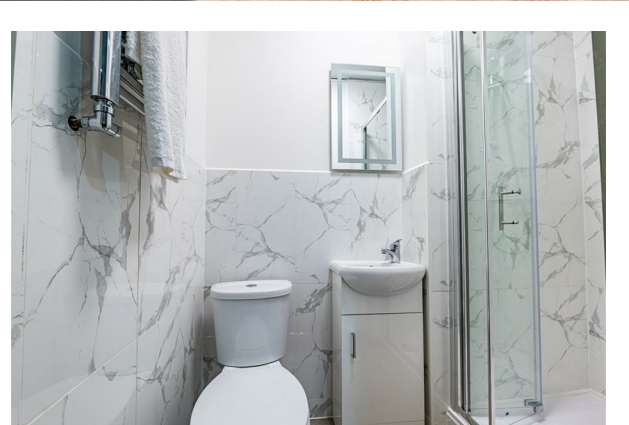
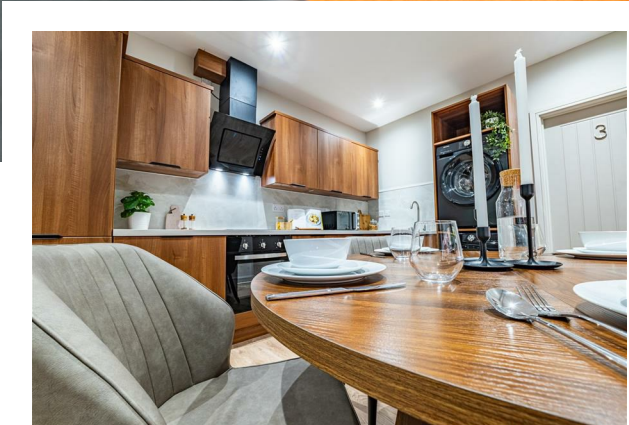
Luxurious & Modern City Centre Studio Apartments - **BILLS INCLUDED**. Located only 5 minutes walk into Coventry city centre and only 5 minutes walk to Coventry Train Station. We have a range of large studio apartments to choose from and have been completely renovated throughout to a very high standard. The studios benefit from a modern fitted kitchenette with fridge/freezer, microwave, sink, built in extractor fan and come fully furnished with modern furniture including bed, wardrobe, chest of drawers and desk. Each studio also comes with a modern fitted private en-suite shower room with overhead rainfall shower and a wall mounted TV. The house further benefits from a communal living room and shared kitchen for those wanting to socialise.

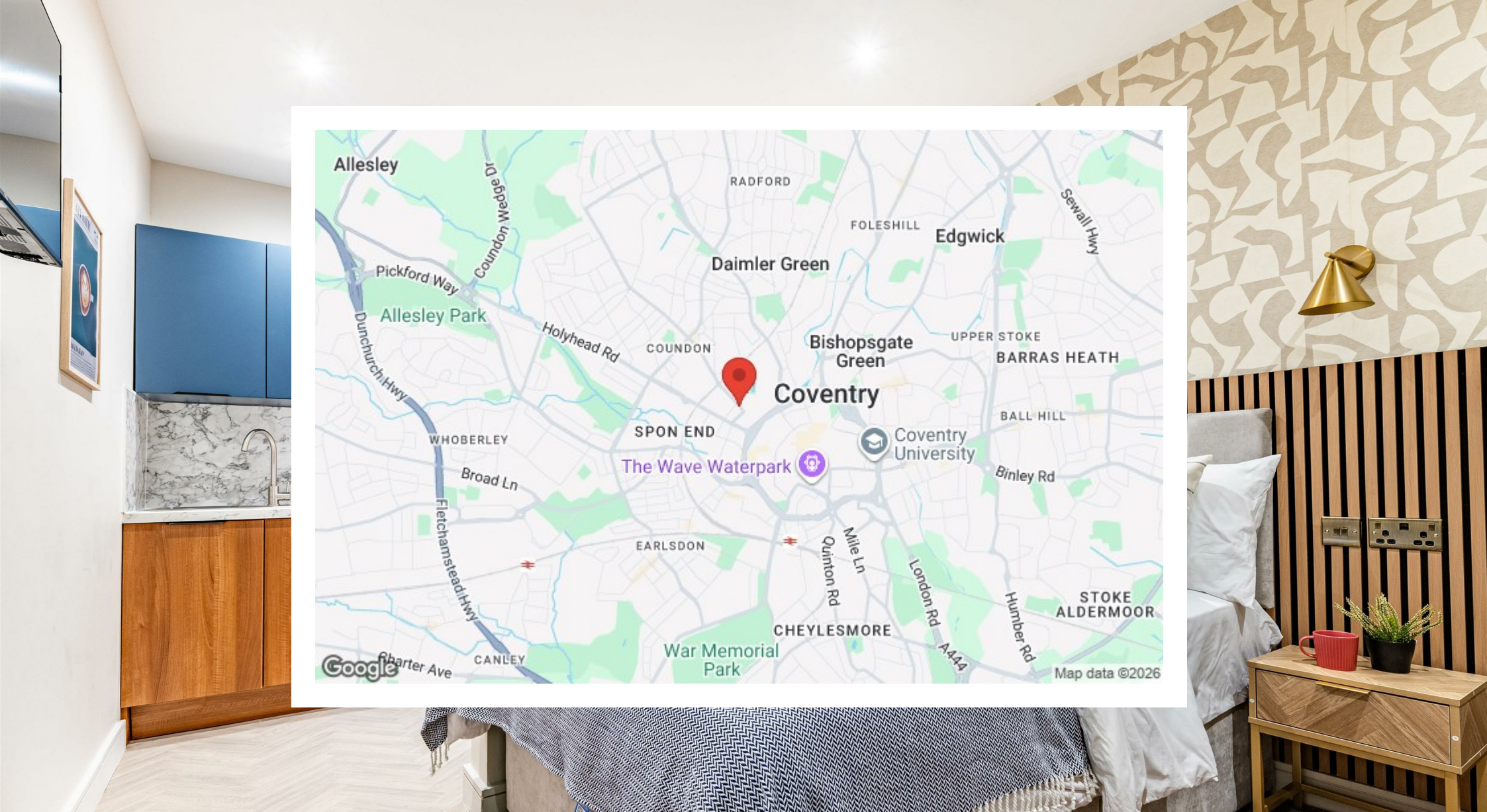
viewing, contact our office today.



For more information or to book you your







Prominence Estates  
5 Queen Isabels Avenue,  
Cheylesmore,  
Coventry,  
CV3 5GE

02476 309 826  
lettings@prominenceestates.com  
www.prominenceestates.com

  
**PROMINENCE**  
ESTATES