


PROMINENCE
ESTATES



RESIDENTIAL
PROPERTY EXPERTS

COVENTRY, WARWICKSHIRE
& LEAMINGTON SPA

THE MARTYRS CLOSE,
CHEYLESMORE, COVENTRY, CV3 5FN

£1,000 PER CALENDAR

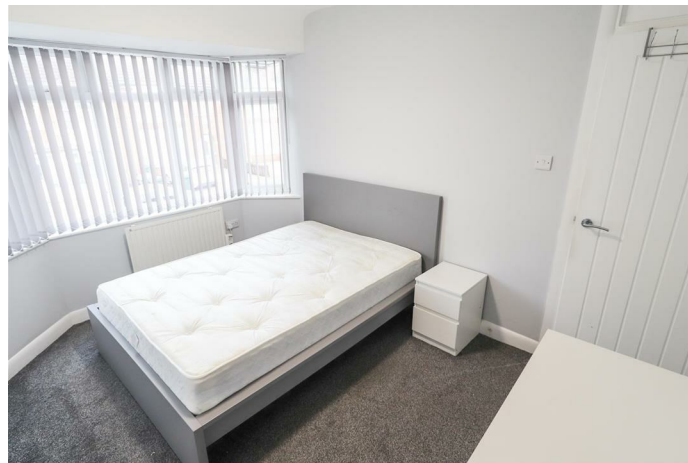
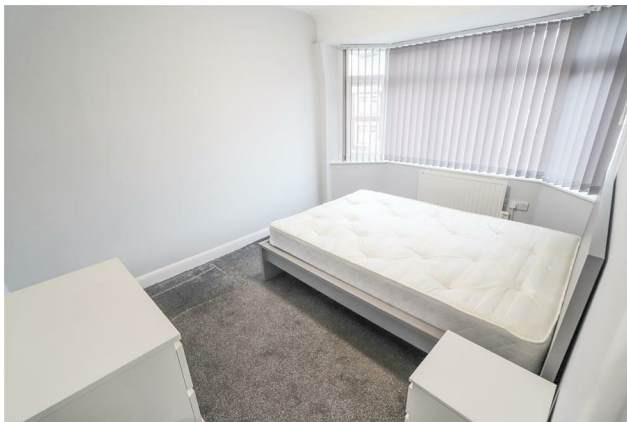
THE MARTYRS CLOSE

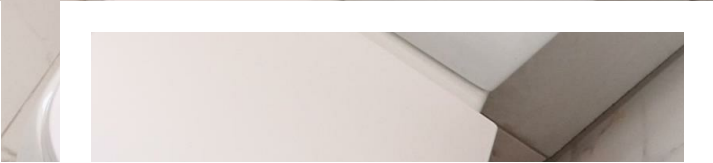
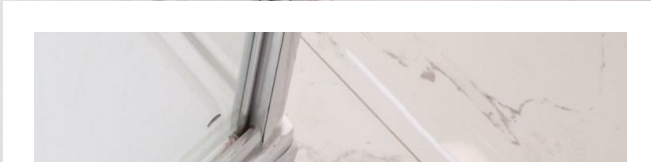
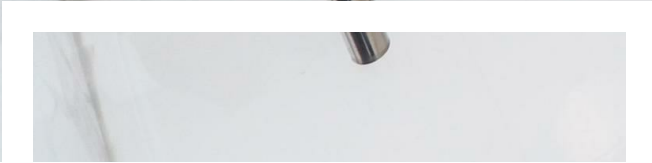


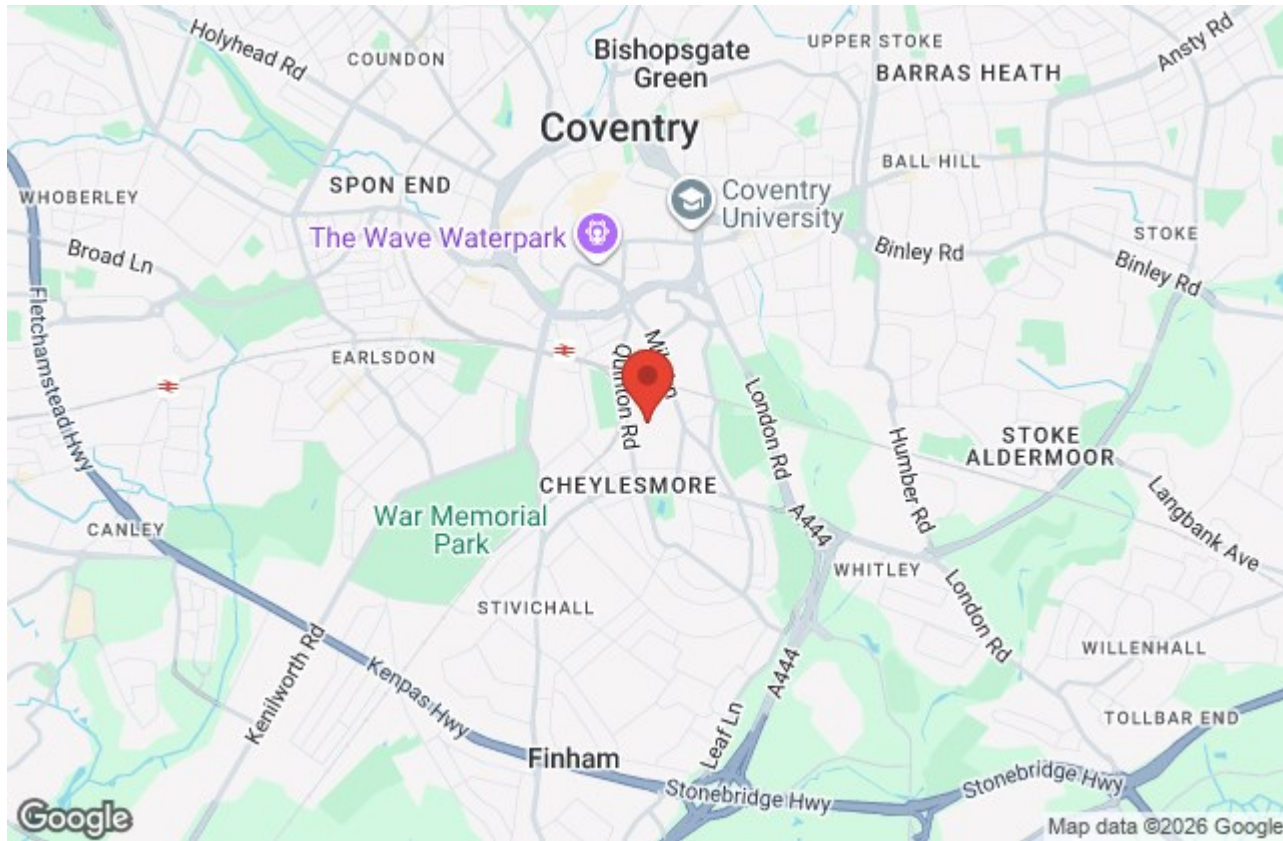
PROMINENCE
ESTATES

Welcome to The Martyrs Close, Coventry - This modern, fully furnished two-bedroom flat is located on the first floor in the popular area of Cheylesmore, Coventry. Within easy walking distance to local shops on Daventry Road and just a short trip to Coventry city centre, the flat offers excellent convenience for shopping, dining, and transport. It is also ideally situated for professionals, with quick and easy access to Jaguar Land Rover, making it an ideal choice for employees looking for a comfortable and accessible home base. Inside, the flat features a spacious living area with a kitchen, two well-appointed bedrooms and a modern bathroom.

Don't miss out on the opportunity to make this charming apartment your new home. Contact us now to arrange a viewing and secure your spot in this desirable Coventry location.







Prominence Estates
5 Queen Isabels Avenue,
Cheylesmore,
Coventry,
CV3 5GE

02476 309 826
lettings@prominenceestates.com
www.prominenceestates.com


PROMINENCE
ESTATES