


PROMINENCE
ESTATES



RESIDENTIAL
PROPERTY EXPERTS

COVENTRY, WARWICKSHIRE
& LEAMINGTON SPA

BRAMBLING AVENUE,
CANLEY, COVENTRY, CV4 8NH

£3,100 PCM

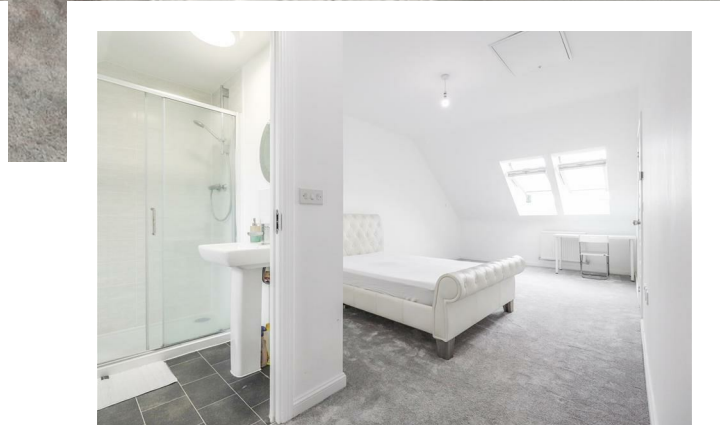
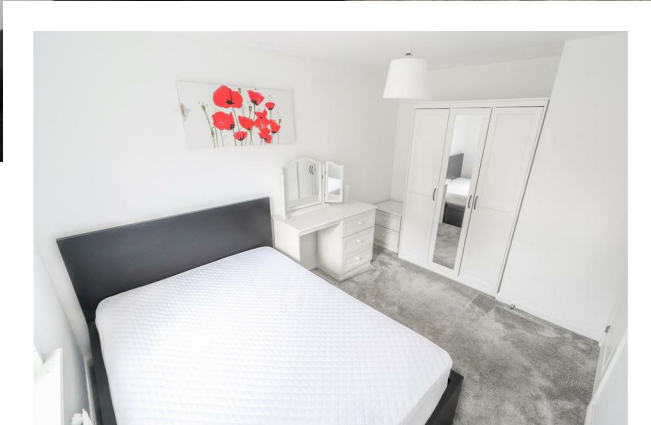
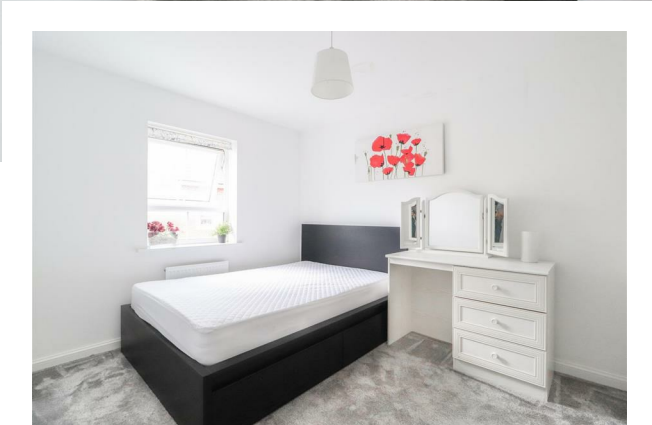
BRAMBLING AVENUE

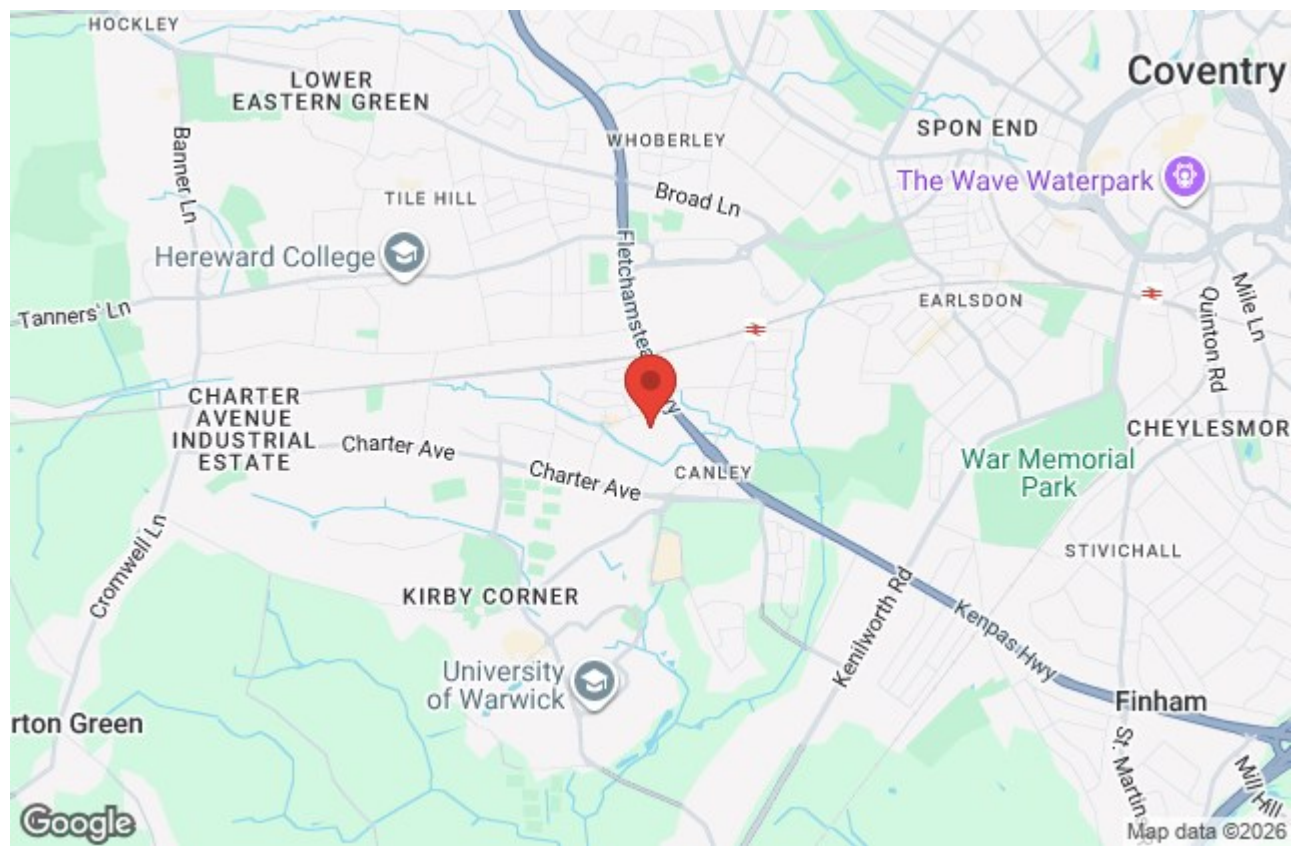


PROMINENCE
ESTATES

**** AVAILABLE SEPTEMBER 2025**** Well-presented and modern 5 bedroom property located in a new development - WIFI INCLUDED - Within walking distance to Warwick University. This amazing property also benefits from off-road parking for 2 vehicles. In brief, the property comprises; entrance hallway, ground floor WC, spacious and modern open plan kitchen/living room with french doors leading out into the large well-maintained garden. On the ground floor there is an en-suite bedroom, to the first floor there are a further three bedrooms and a family bathroom and on the second floor is the large master bedroom with en-suite.







Prominence Estates
5 Queen Isabels Avenue,
Cheylesmore,
Coventry,
CV3 5GE

02476 309 826
lettings@prominenceestates.com
www.prominenceestates.com


PROMINENCE
ESTATES