

  
**PROMINENCE**  
ESTATES



**RESIDENTIAL**  
PROPERTY EXPERTS

COVENTRY, WARWICKSHIRE  
& LEAMINGTON SPA

**BRAMBLING AVENUE,**  
CANLEY, COVENTRY, CV4 8NH

**£3,000 PCM**



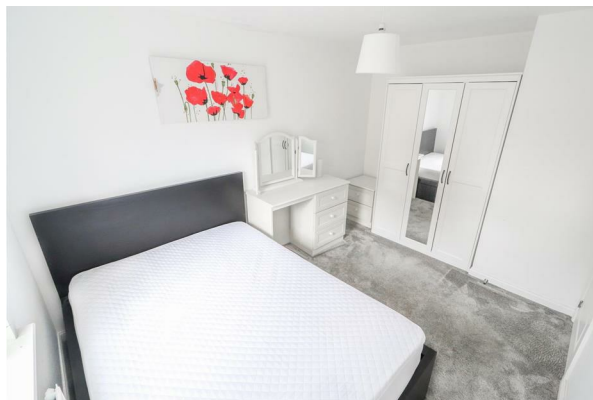
## BRAMBLING AVENUE



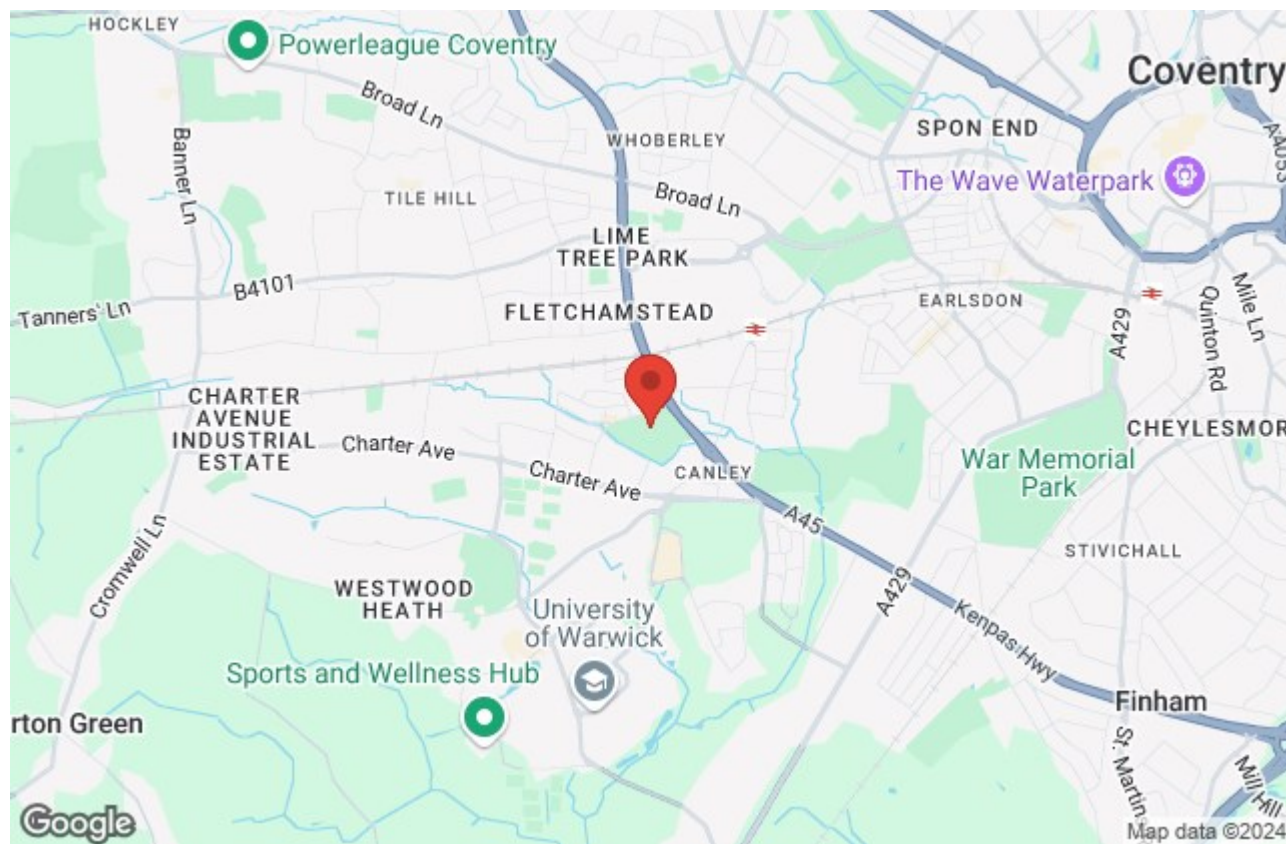
  
**PROMINENCE**  
— ESTATES —

**\*\* AVAILABLE SEPTEMBER 2025\*\*** Well-presented and modern 5 bedroom property located in a new development - WIFI INCLUDED - Within walking distance to Warwick University. This amazing property also benefits from off-road parking for 2 vehicles. In brief, the property comprises; entrance hallway, ground floor WC, spacious and modern open plan kitchen/living room with french doors leading out into the large well-maintained garden. On the ground floor there is an en-suite bedroom, to the first floor there are a further three bedrooms and a family bathroom and on the second floor is the large master bedroom with en-suite.









Prominence Estates  
5 Queen Isabels Avenue,  
Cheylesmore,  
Coventry,  
CV3 5GE

02476 309 826  
[sales@prominenceestates.com](mailto:sales@prominenceestates.com)  
[www.prominenceestates.com](http://www.prominenceestates.com)

  
**PROMINENCE**  
— ESTATES —