


PROMINENCE
ESTATES



RESIDENTIAL
PROPERTY EXPERTS

COVENTRY, WARWICKSHIRE
& LEAMINGTON SPA

QUEEN ISABELS AVENUE,
CHEYLESMORE, COVENTRY, CV3 5GF

£1,400 PER CALENDAR

QUEEN ISABELS AVENUE




PROMINENCE
— ESTATES —

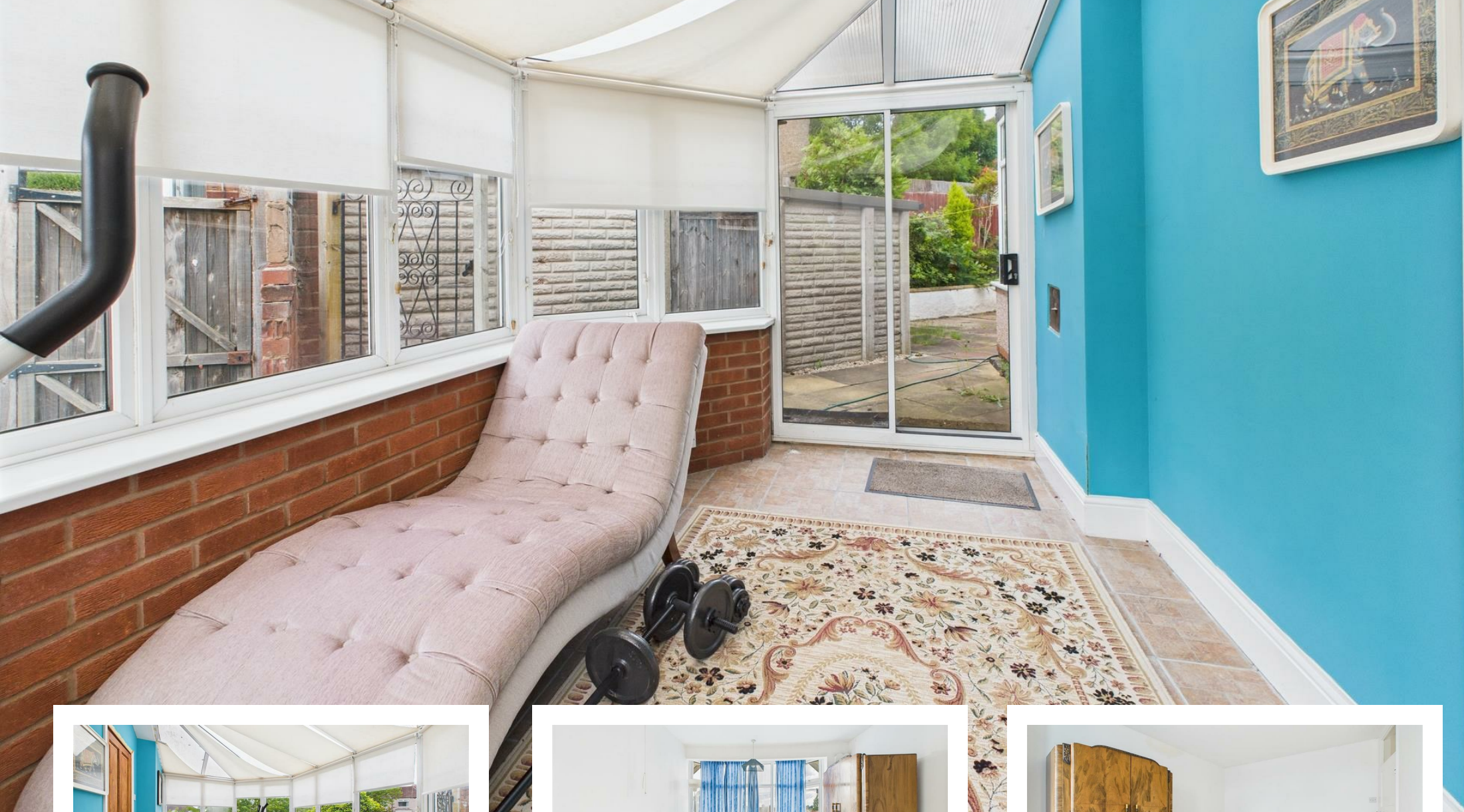
A beautifully presented three-bedroom semi-detached home located in the popular area of Cheylesmore, Coventry. Fully furnished and available now, this spacious property offers comfortable living with a bright living room, separate dining room, and a charming conservatory leading out to a large, well-maintained garden. Upstairs features two generously sized double bedrooms, a third room ideal as a home office or study, and a brand new modern bathroom.

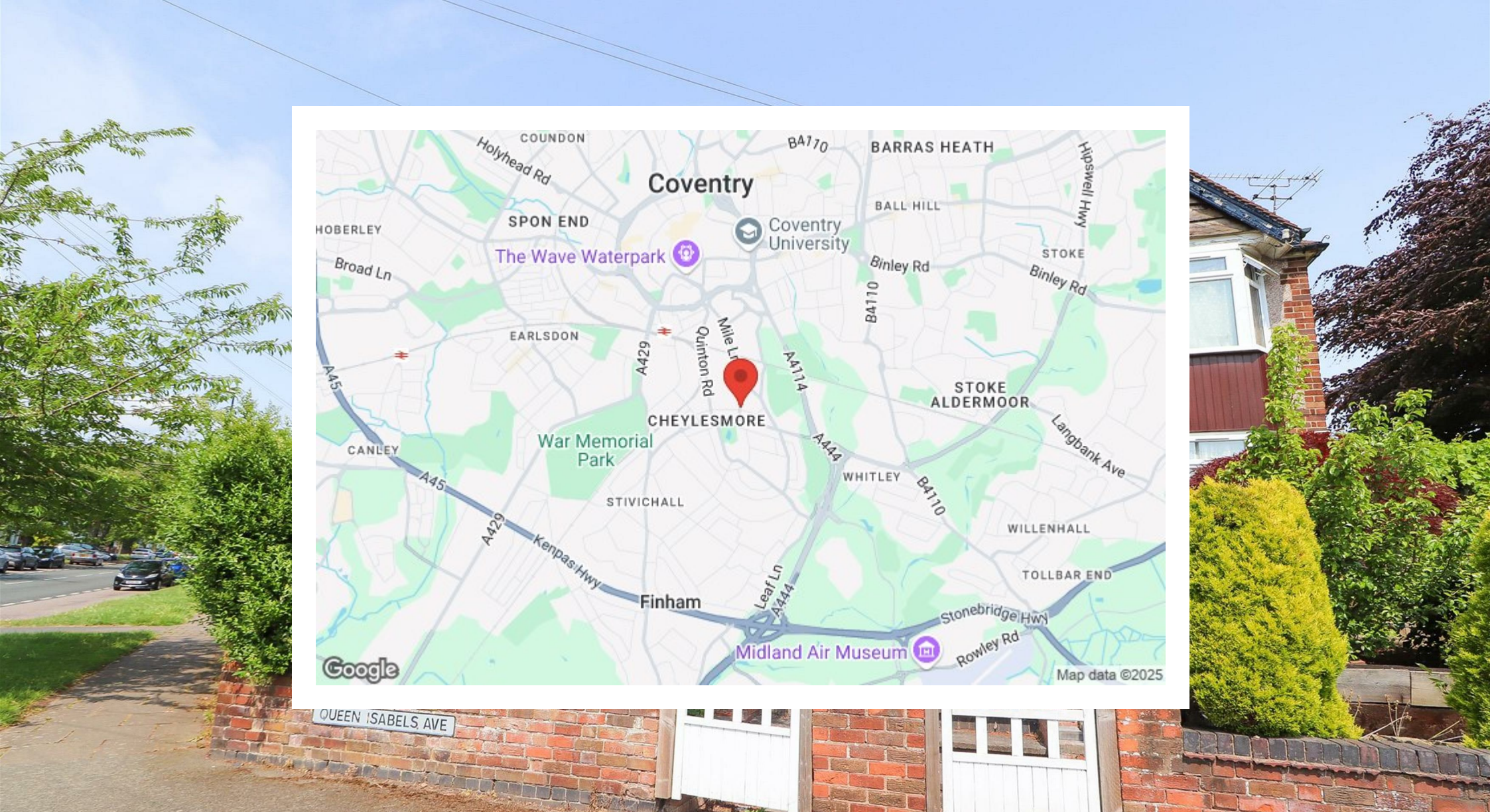
for space, style, and convenience.



Ideally situated in Cheylesmore, the property is close to a range of local amenities including shops, schools, parks, and excellent transport links. With easy access to Coventry city centre, Coventry University, and major road routes such as the A45 and A46, this home is perfect for professionals, couples, or small families looking







Prominence Estates
5 Queen Isabels Avenue,
Cheylesmore,
Coventry,
CV3 5GE

02476 309 826
lettings@prominenceestates.com
www.prominenceestates.com


PROMINENCE
— ESTATES —