


PROMINENCE
ESTATES



RESIDENTIAL
PROPERTY EXPERTS

COVENTRY, WARWICKSHIRE
& LEAMINGTON SPA

THE PAVILION,
BINLEY, COVENTRY, CV3 1QP

£300,000

THE PAVILION



PROMINENCE
ESTATES

Stylish Three-Storey Townhouse on the Sought-After Copeswood Estate

Situated on the ever-popular Copeswood Estate, this modern and spacious three-storey townhouse offers versatile living accommodation, ideal for families and professionals alike.

The ground floor features a contemporary open-plan kitchen and dining area, perfect for entertaining and everyday living, along with the convenience of a ground floor W/C.

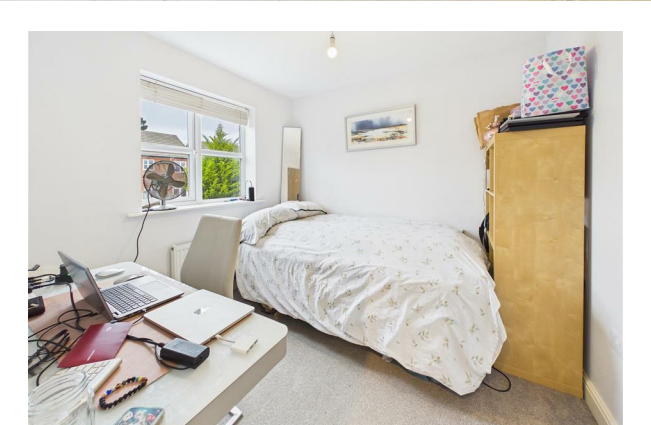
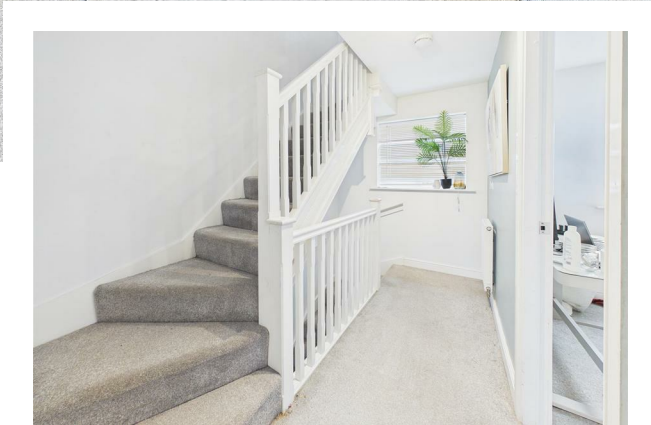
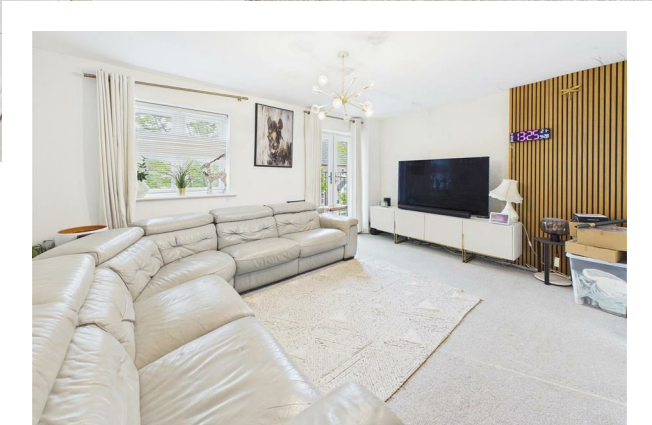
To the first floor, you'll find a bright and airy lounge complete with a charming Juliet balcony, providing an inviting space to relax and unwind. The property boasts three well-proportioned bedrooms across the upper floors, including a generous master bedroom with its own ensuite. A modern family bathroom

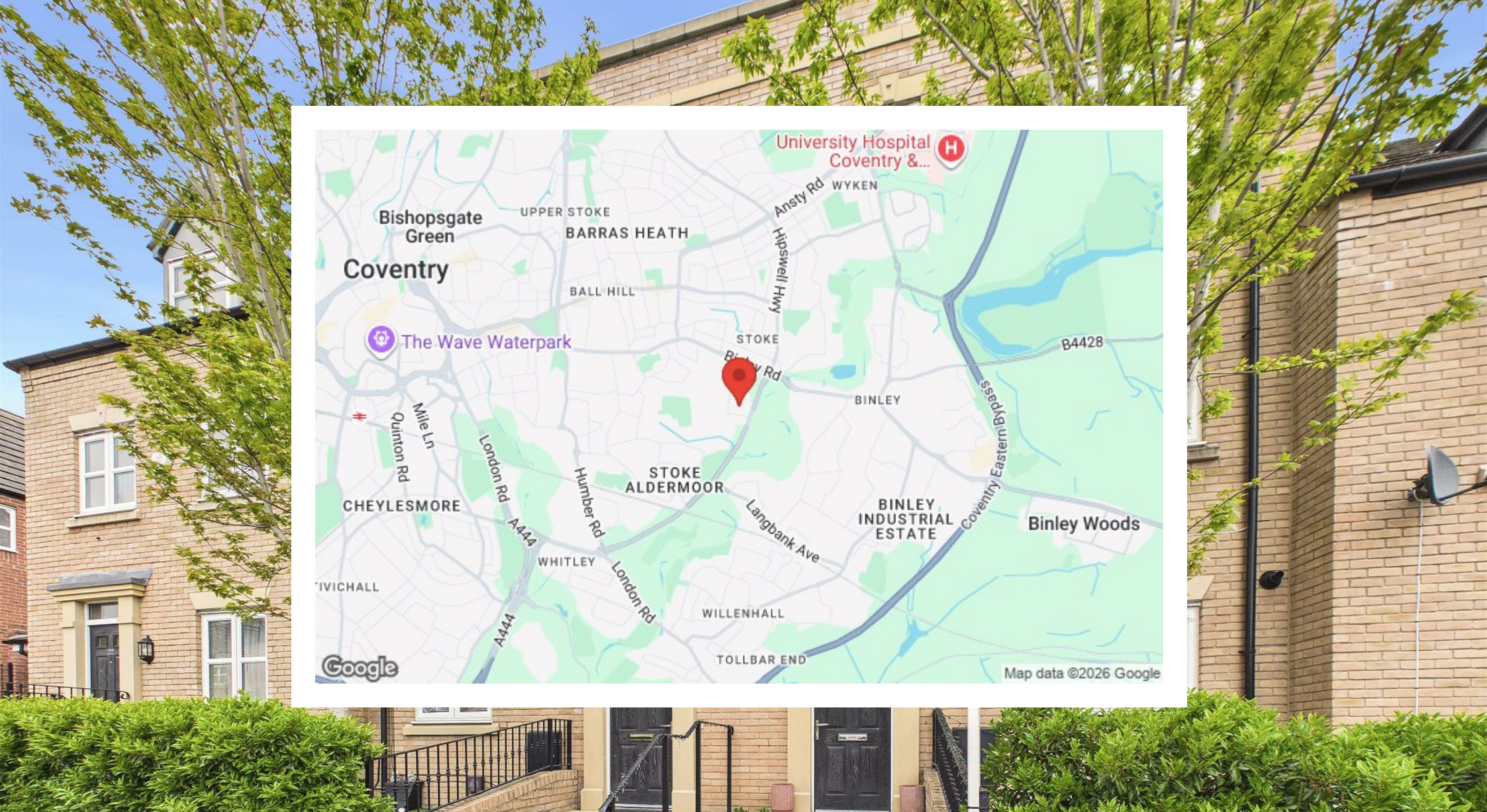
serves the remaining bedrooms.

Externally, the home benefits from off-road parking, a garage, and a private rear garden, ideal for outdoor enjoyment. The property is well positioned for a range of local amenities, including nearby schools such as Ernesford Grange Community Academy and All Saints Church of England Primary School, making it a convenient choice for families. Everyday shopping needs are easily met with local convenience stores, while larger retail options can be found at Warwickshire Shopping Park, offering a variety of high street brands and supermarkets.

This attractive home offers a perfect blend of style, space, and practicality in a highly desirable location. Early viewing is highly recommended.







Prominence Estates
5 Queen Isabels Avenue,
Cheylesmore,
Coventry,
CV3 5GE

02476 309 826
lettings@prominenceestates.com
www.prominenceestates.com


PROMINENCE
ESTATES