


PROMINENCE
ESTATES



RESIDENTIAL
PROPERTY EXPERTS

COVENTRY, WARWICKSHIRE
& LEAMINGTON SPA

HAREFIELD ROAD,
STOKE, COVENTRY, CV2 4BT

£1,300 PER CALENDAR

HAREFIELD ROAD



PROMINENCE
ESTATES

A well presented and spacious three bedroom home, available immediately and ideally suited to families or professional sharers. The property offers generous living accommodation, comprising two versatile reception rooms perfect for both everyday living and entertaining.

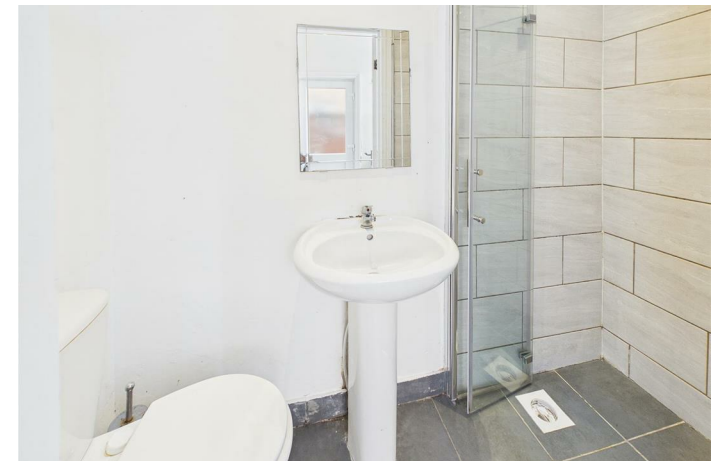
Benefiting from two bathrooms, the home provides added convenience and practicality. Offered fully furnished, it is ready for immediate occupancy.

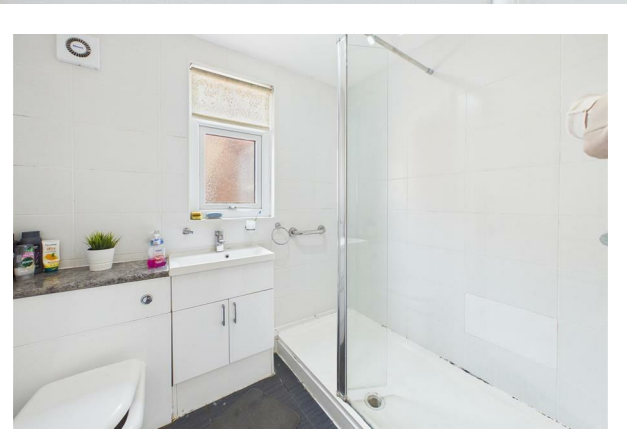
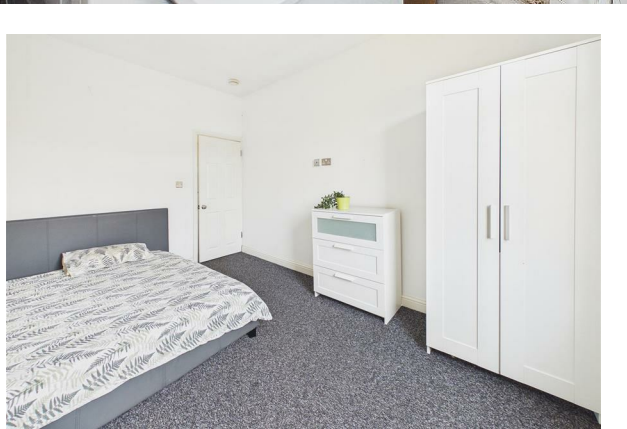
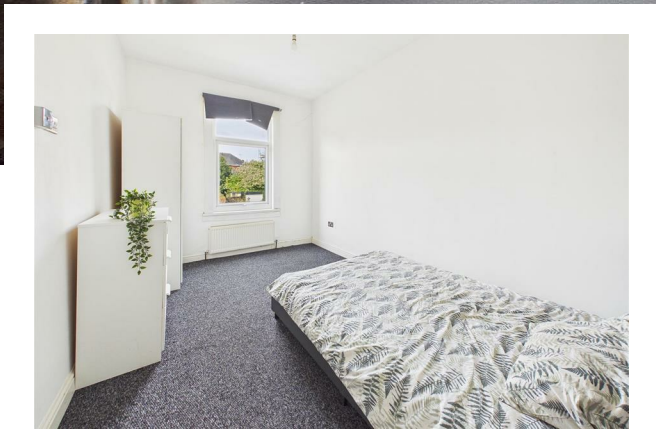
and regular connections.

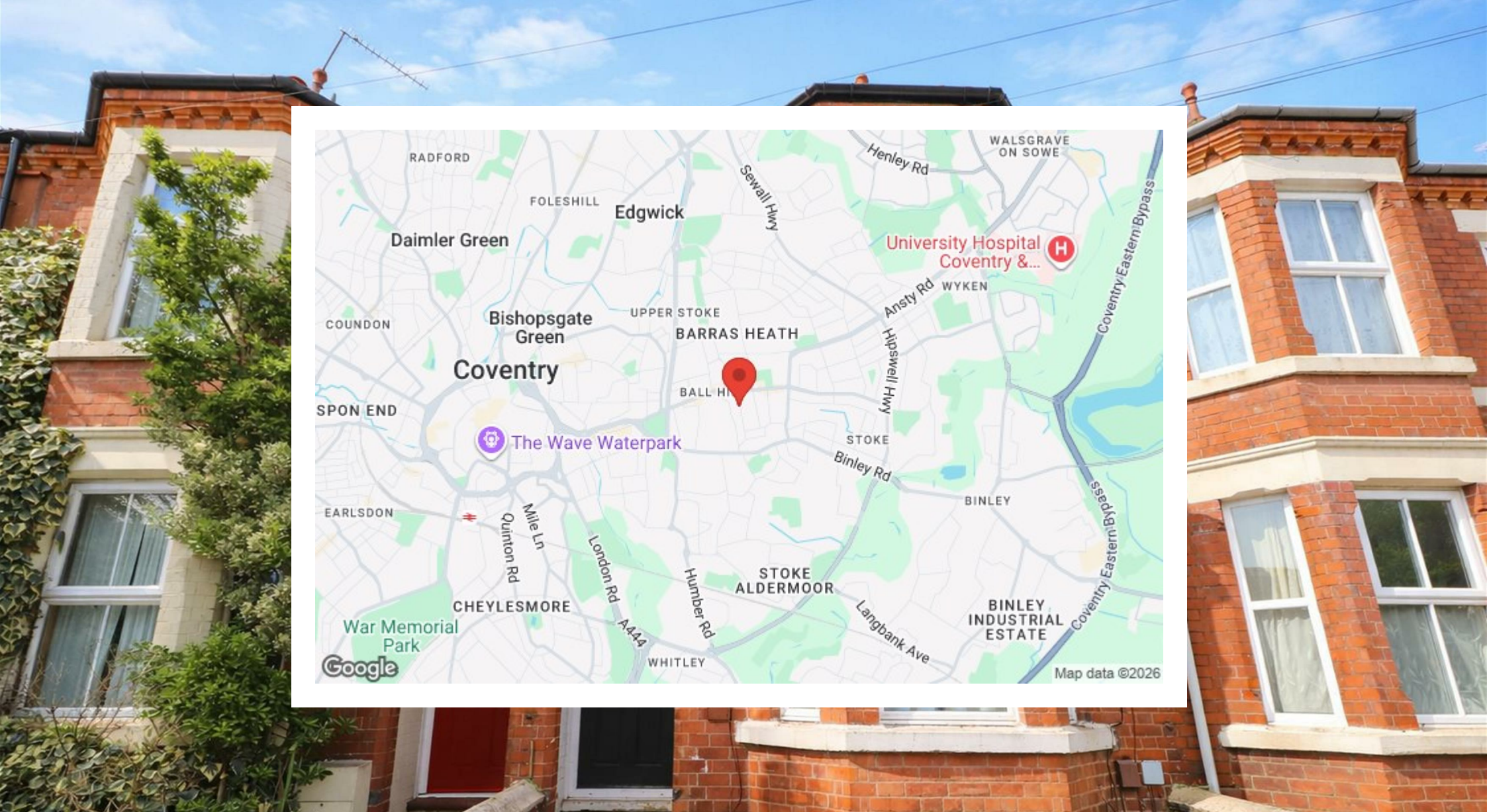
Early viewing is highly recommended to avoid missing out on this desirable home.



Situated on Harefield Road in Coventry, the property enjoys a convenient location close to local amenities, excellent transport links, and easy access to the city centre. The property is also well positioned for access to University Hospital Coventry via frequent bus routes, including the 9, 17, 20A and 60, providing direct







Prominence Estates
5 Queen Isabels Avenue,
Cheylesmore,
Coventry,
CV3 5GE

02476 309 826
lettings@prominenceestates.com
www.prominenceestates.com


PROMINENCE
ESTATES