


PROMINENCE
ESTATES



RESIDENTIAL
PROPERTY EXPERTS

COVENTRY, WARWICKSHIRE
& LEAMINGTON SPA

POITIERS ROAD,
CHEYLESMORE, COVENTRY, CV3 5JY

£1,250 PER CALENDAR

POITIERS ROAD

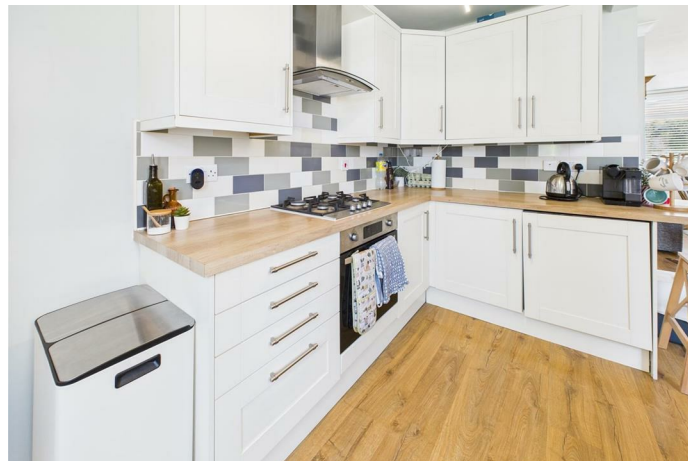


PROMINENCE
— ESTATES —

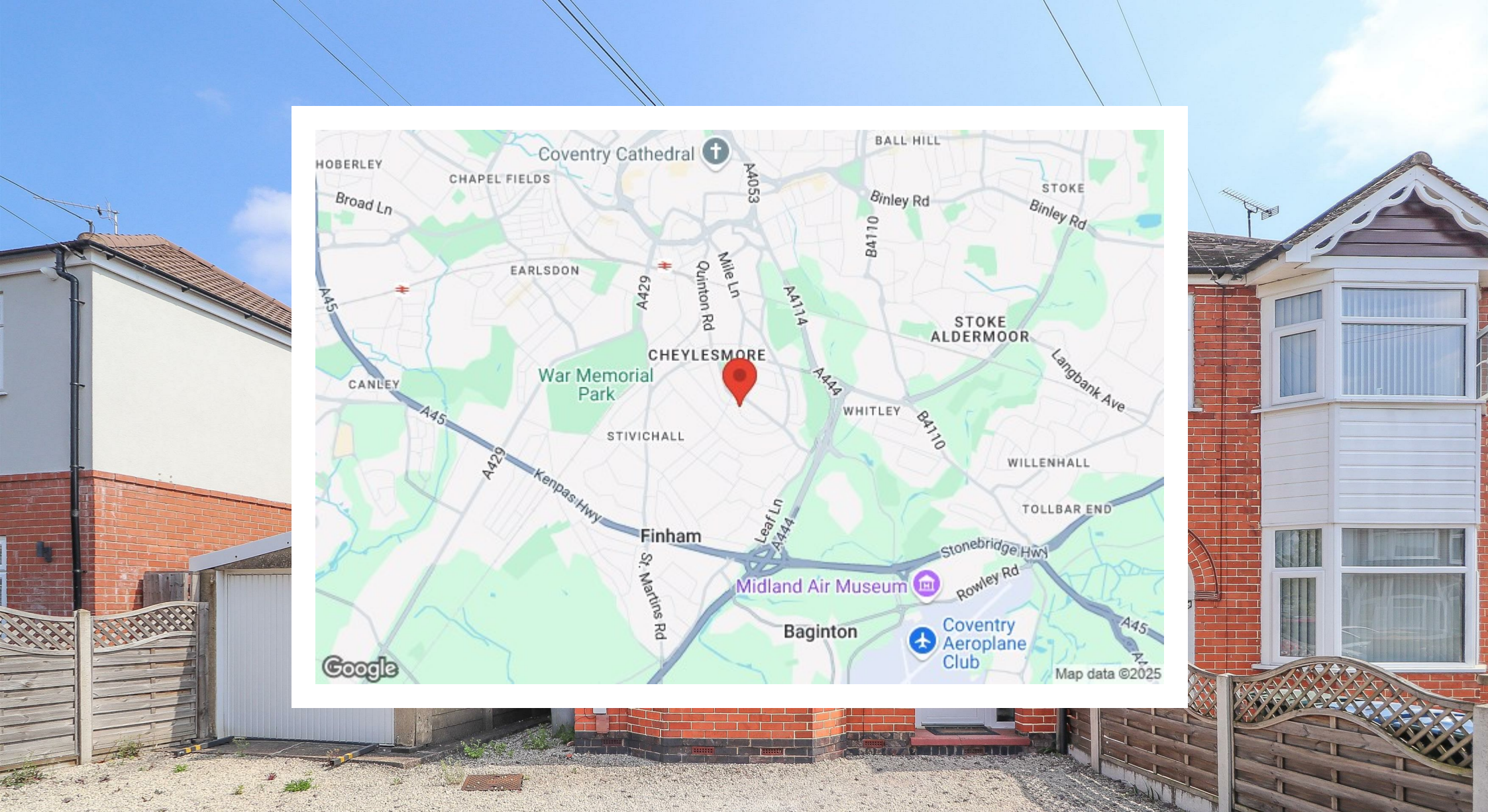
Available from July, this spacious three bedroom end of terrace property is situated in the desirable area of Cheylesmore. The ground floor boasts a bright, open-plan living and dining area with an adjoining open kitchen, leading out to a generous rear garden ideal for families.

Upstairs comprises two large double bedrooms, a third smaller room perfect as a home office or children's room, and a family bathroom with a shower over the bath. The property also benefits from a large front driveway with space for two vehicles and a garage.

Located just a 5-minute drive from Coventry city centre & train station, this home offers excellent transport links. Local amenities include shops, schools, and parks, making it an ideal choice for families or professionals seeking both comfort







Prominence Estates
5 Queen Isabels Avenue,
Cheylesmore,
Coventry,
CV3 5GE

02476 309 826
lettings@prominenceestates.com
www.prominenceestates.com


PROMINENCE
— ESTATES —