

  
**PROMINENCE**  
ESTATES



**RESIDENTIAL**  
PROPERTY EXPERTS

COVENTRY, WARWICKSHIRE  
& LEAMINGTON SPA

**CROMWELL STREET,**  
FOLESHILL, COVENTRY, CV6 5EZ

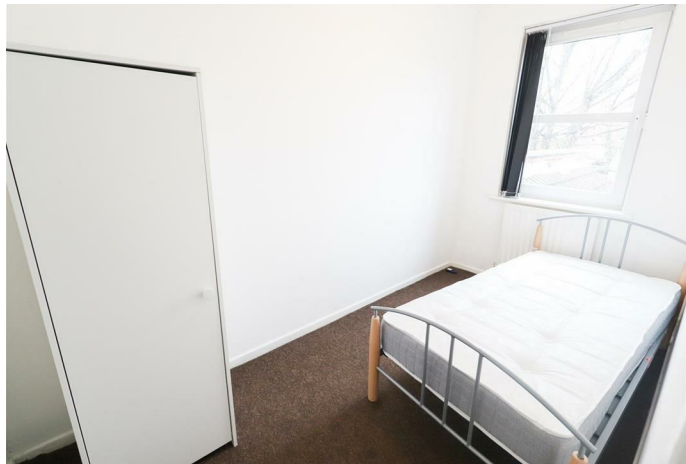
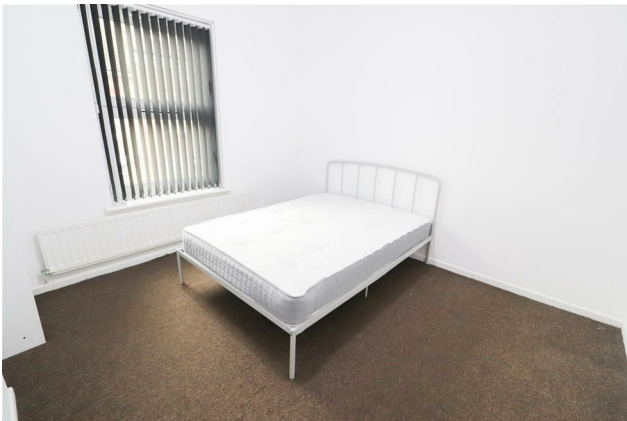
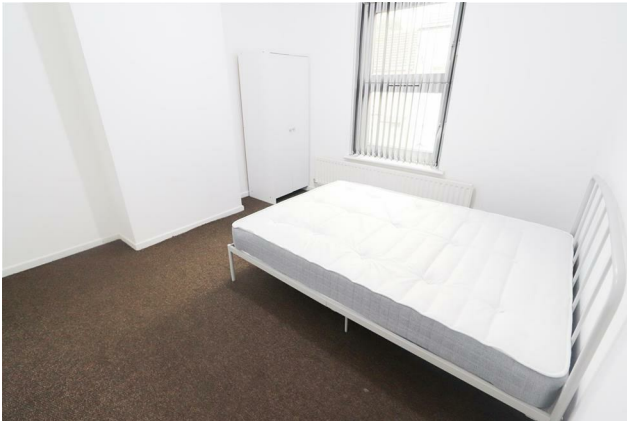
**£900 PCM**

## CROMWELL STREET

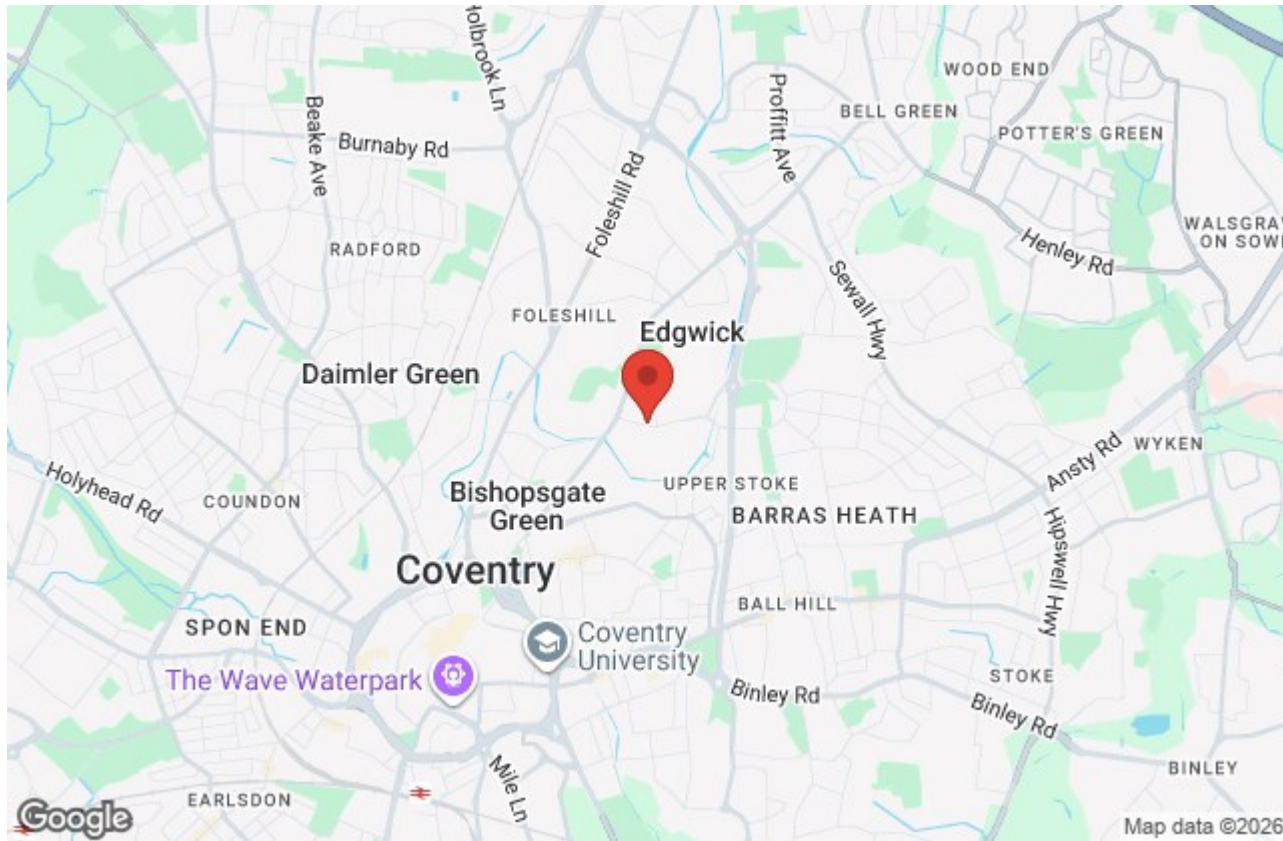


**PROMINENCE**  
ESTATES

Two bedroom house located in the vibrant area of Foleshill benefitting from large and spacious lounge and a sitting room/study - This two bedroom house benefits from nearby grocery stores, supermarkets, restaurants and bus routes to Coventry City Centre. In brief the property comprises; hallway, front ground floor sitting room/study room, large living room leading into the kitchen. To the first floor is a large double bedroom, second double bedroom and a family bathroom.







Prominence Estates  
5 Queen Isabels Avenue,  
Cheylesmore,  
Coventry,  
CV3 5GE

02476 309 826  
lettings@prominenceestates.com  
www.prominenceestates.com

  
**PROMINENCE**  
ESTATES