

  
**PROMINENCE**  
ESTATES



**RESIDENTIAL**  
PROPERTY EXPERTS

COVENTRY, WARWICKSHIRE  
& LEAMINGTON SPA

**SPON STREET,**  
CITY CENTRE, COVENTRY, CV1 3BB

**£1,300 PER CALENDAR**



SPON STREET



**PROMINENCE**  
— ESTATES —

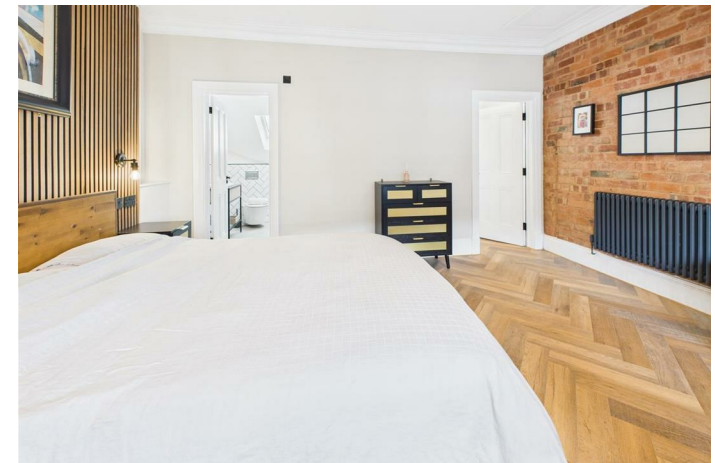
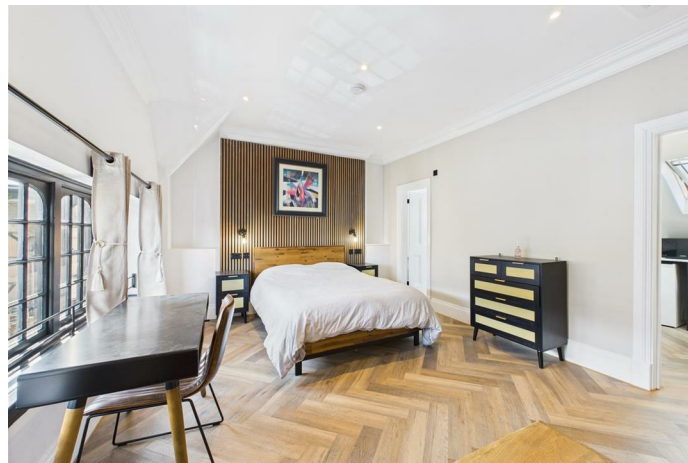
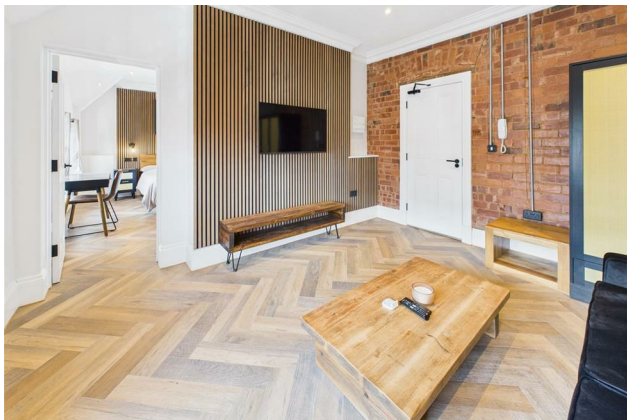
This recently refurbished 1-bedroom apartment offers contemporary luxury in a unique, character-rich setting. Situated on Coventry's historic Spon Street, the apartment has been finished to a high standard throughout, featuring quality furnishings, modern fittings, and a striking LED-lit feature wall that brings a stylish focal point to the living area. The open-plan layout is bright and inviting, ideal for both relaxing and entertaining. Fully furnished and with all bills included, this home offers a hassle-free move-in experience. It's perfectly suited for professionals or couples looking for a combination of modern comfort and city-centre convenience.

Spon Street is one of Coventry's most iconic locations, known for its preserved medieval architecture and vibrant atmosphere. The property is just a short walk from Coventry Rail Station, offering

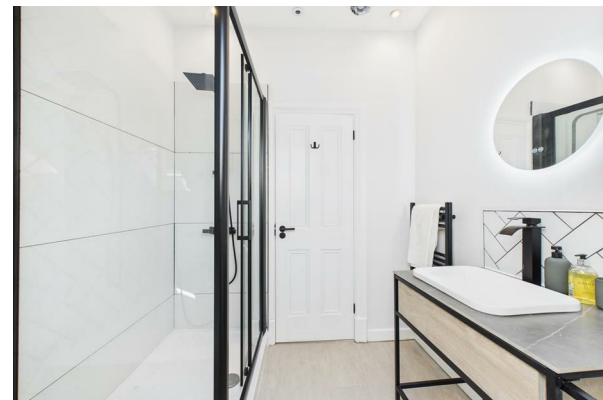
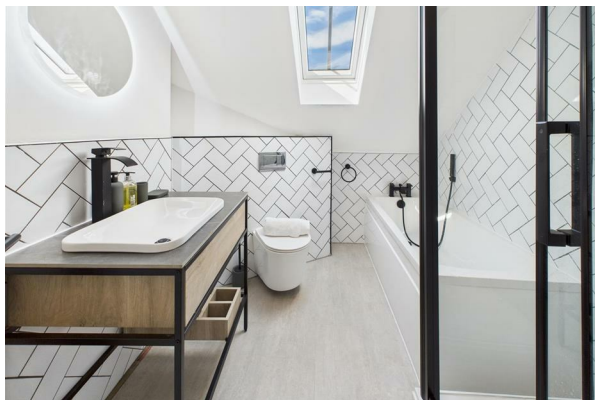
direct links to Birmingham and London, while local bus routes and road networks are easily accessible. A wide range of shops, supermarkets, cafés, and independent stores are all within walking distance, with highlights including Morrisons, Aldi, and a variety of independent retailers.

For dining and leisure, you'll find charming venues like The Old Windmill pub, one of the city's oldest, as well as nearby cafés and restaurants. The cultural attractions of Coventry—such as the Transport Museum, Herbert Art Gallery, and the Cathedral Quarter—are all close by, making this an ideal base to enjoy everything the city has to offer.

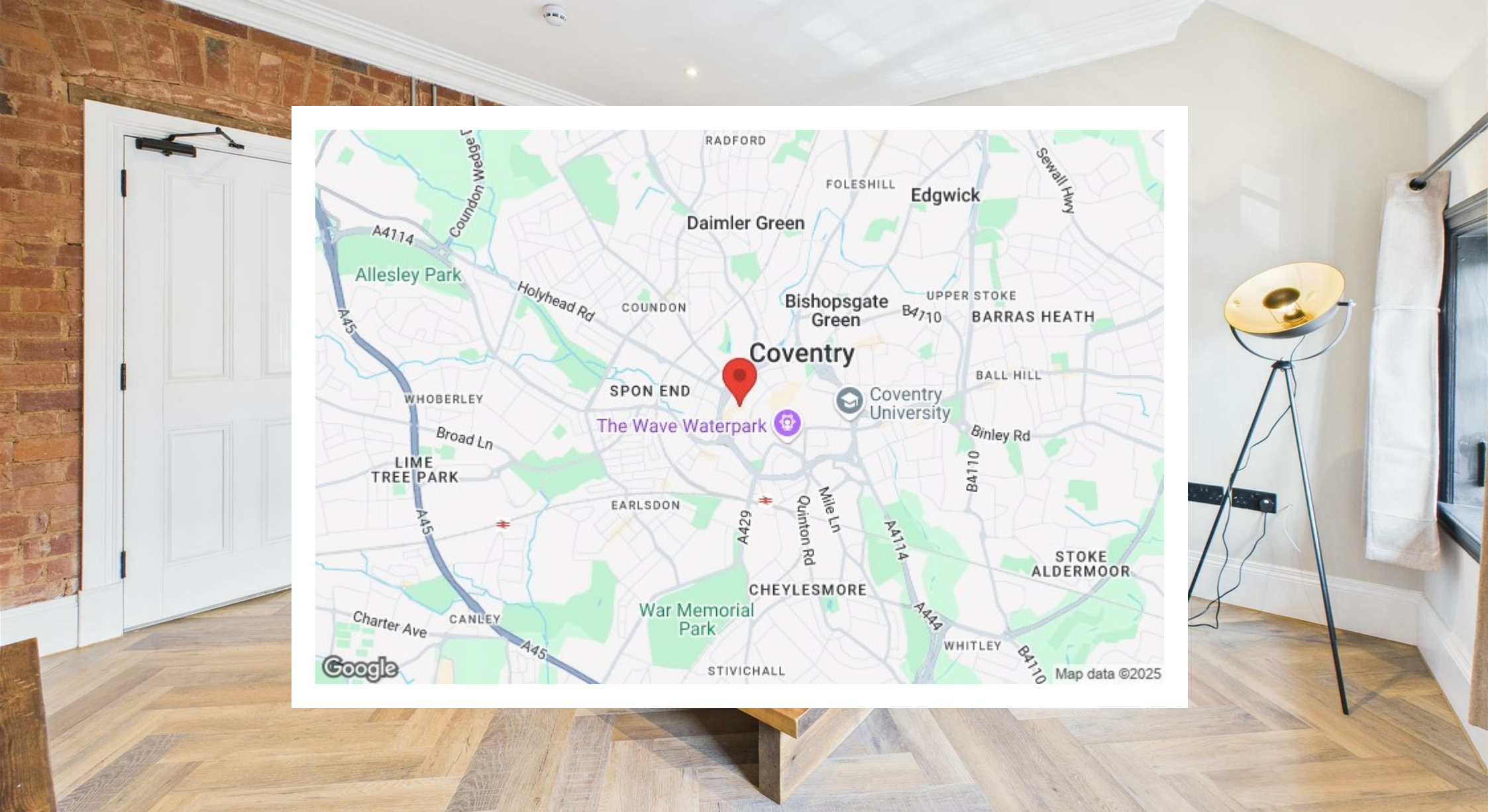
Spon Street Car Park is also nearby, offering 24/7 access and convenient pay-and-display options.











Prominence Estates  
5 Queen Isabels Avenue,  
Cheylesmore,  
Coventry,  
CV3 5GE

02476 309 826  
[lettings@prominenceestates.com](mailto:lettings@prominenceestates.com)  
[www.prominenceestates.com](http://www.prominenceestates.com)

  
**PROMINENCE**  
— ESTATES —