




PROMINENCE
ESTATES



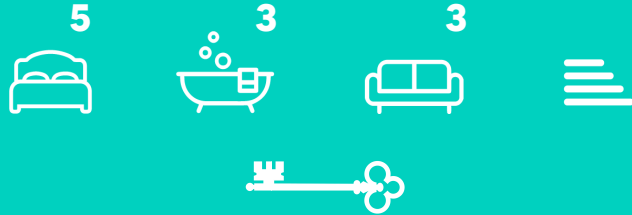
RESIDENTIAL
PROPERTY EXPERTS

COVENTRY, WARWICKSHIRE
& LEAMINGTON SPA

MAIDAVALE CRESCENT,
COVENTRY, CV3 6FZ

£1,650

MAIDAVALE CRESCENT



PROMINENCE
— ESTATES —

A spacious and well-presented five-bedroom home located on the sought-after Maidavale Crescent in Styvechale, Coventry. This attractive property offers generous living accommodation, including three bathrooms and two bright and versatile reception rooms, ideal for family living.

The house is part furnished, providing a convenient option for those looking to move in with ease, while still allowing space to personalise. Outside, the property benefits from driveway parking, offering ample off-road space.

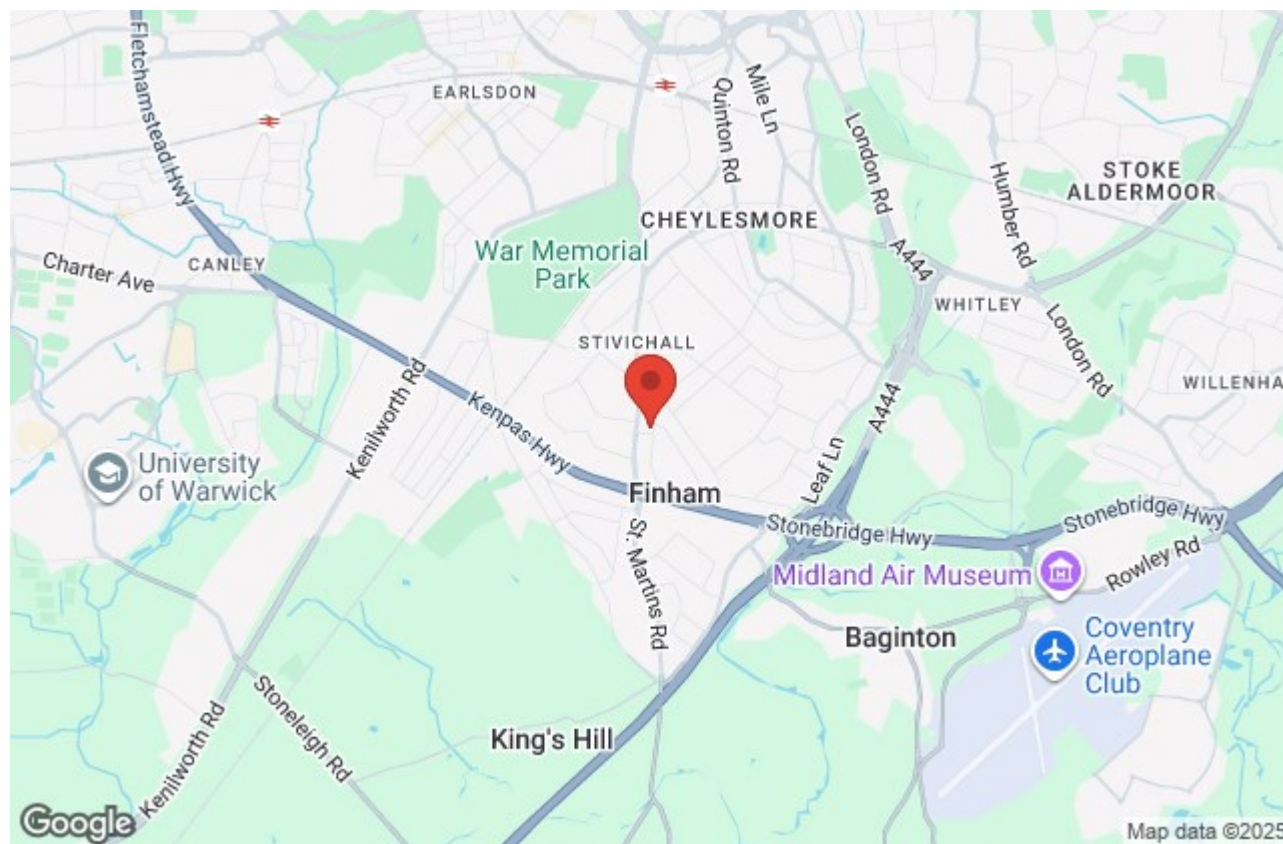
Maidavale Crescent is ideally situated in a quiet and well-established residential area, within easy reach of a wide range of local amenities. Nearby, you'll find highly regarded schools, local shops, supermarkets, and parks, including the popular War Memorial Park. The area is also well served

by public transport links, with regular bus services into Coventry city centre and easy access to Coventry Railway Station, making it a great location for commuters. Major road links including the A45, A46, and M6 are also within close proximity.

This home offers the perfect balance of space, comfort, and convenience in one of Coventry's most desirable neighbourhoods. Early viewing is recommended to fully appreciate what this property has to offer.







Prominence Estates
5 Queen Isabells Avenue,
Cheylesmore,
Coventry,
CV3 5GE

02476 309 826
lettings@prominenceestates.com
www.prominenceestates.com


PROMINENCE
— ESTATES —