


PROMINENCE
ESTATES



RESIDENTIAL
PROPERTY EXPERTS

COVENTRY, WARWICKSHIRE
& LEAMINGTON SPA

WRIGSHAM STREET,
CHEYLESMORE, COVENTRY, CV3 5FU

£1,100 PER CALENDAR

WRIGSHAM STREET

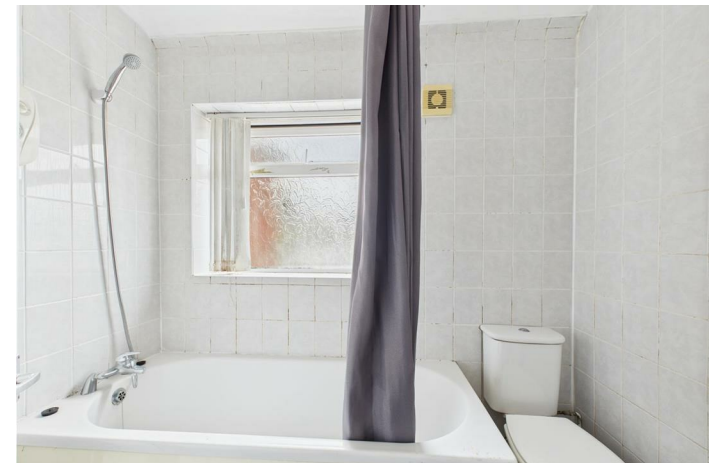


PROMINENCE
— ESTATES —

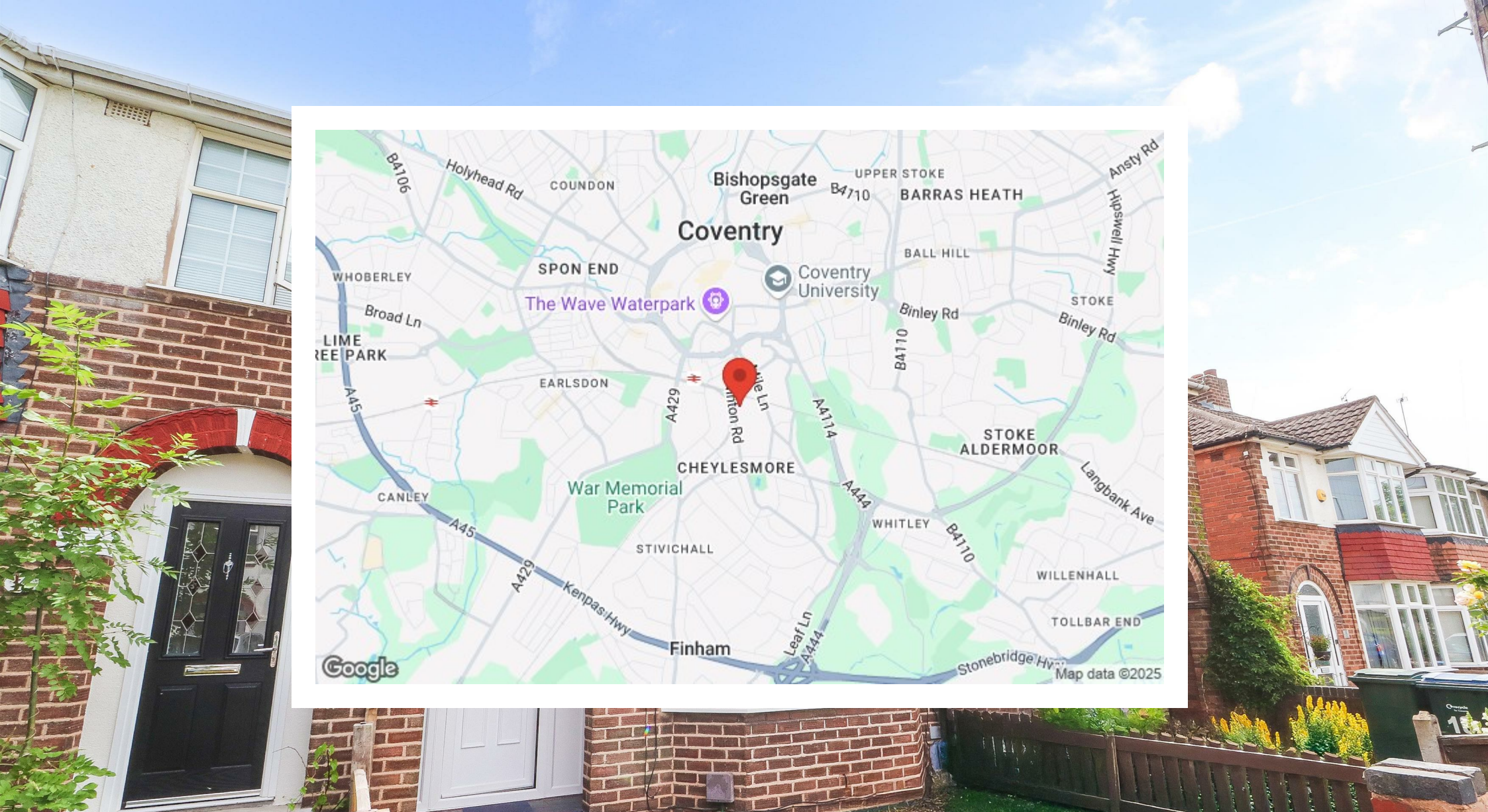
Located on the popular Wrigsham Street in Cheylesmore, Coventry, this well-presented 3-bedroom house offers comfortable living in a convenient location. Downstairs features a spacious open-plan living and dining area, perfect for relaxing or entertaining, along with a separate kitchen that leads to a useful lean-to for extra storage or utility space. Upstairs, the property offers three good-sized bedrooms and a family bathroom.

Situated in a sought-after residential area, this home is close to excellent local amenities including shops, schools, parks, and public transport links. Coventry city centre, the train station, and major road networks are also easily accessible.

This property is available now – don't miss out!







Prominence Estates
5 Queen Isabels Avenue,
Cheylesmore,
Coventry,
CV3 5GE

02476 309 826
lettings@prominenceestates.com
www.prominenceestates.com


PROMINENCE
— ESTATES —