


PROMINENCE
ESTATES



RESIDENTIAL
PROPERTY EXPERTS

COVENTRY, WARWICKSHIRE
& LEAMINGTON SPA

THE MARTYRS CLOSE,
CHEYLESMORE, COVENTRY, CV3 5FP

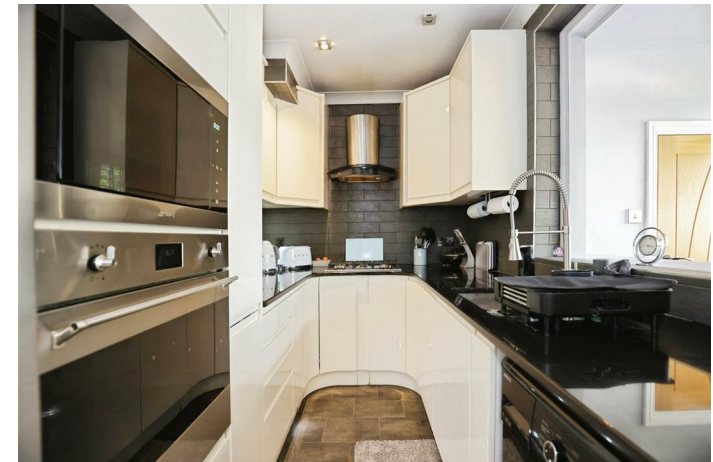
£1,400 PER CALENDAR

THE MARTYRS CLOSE

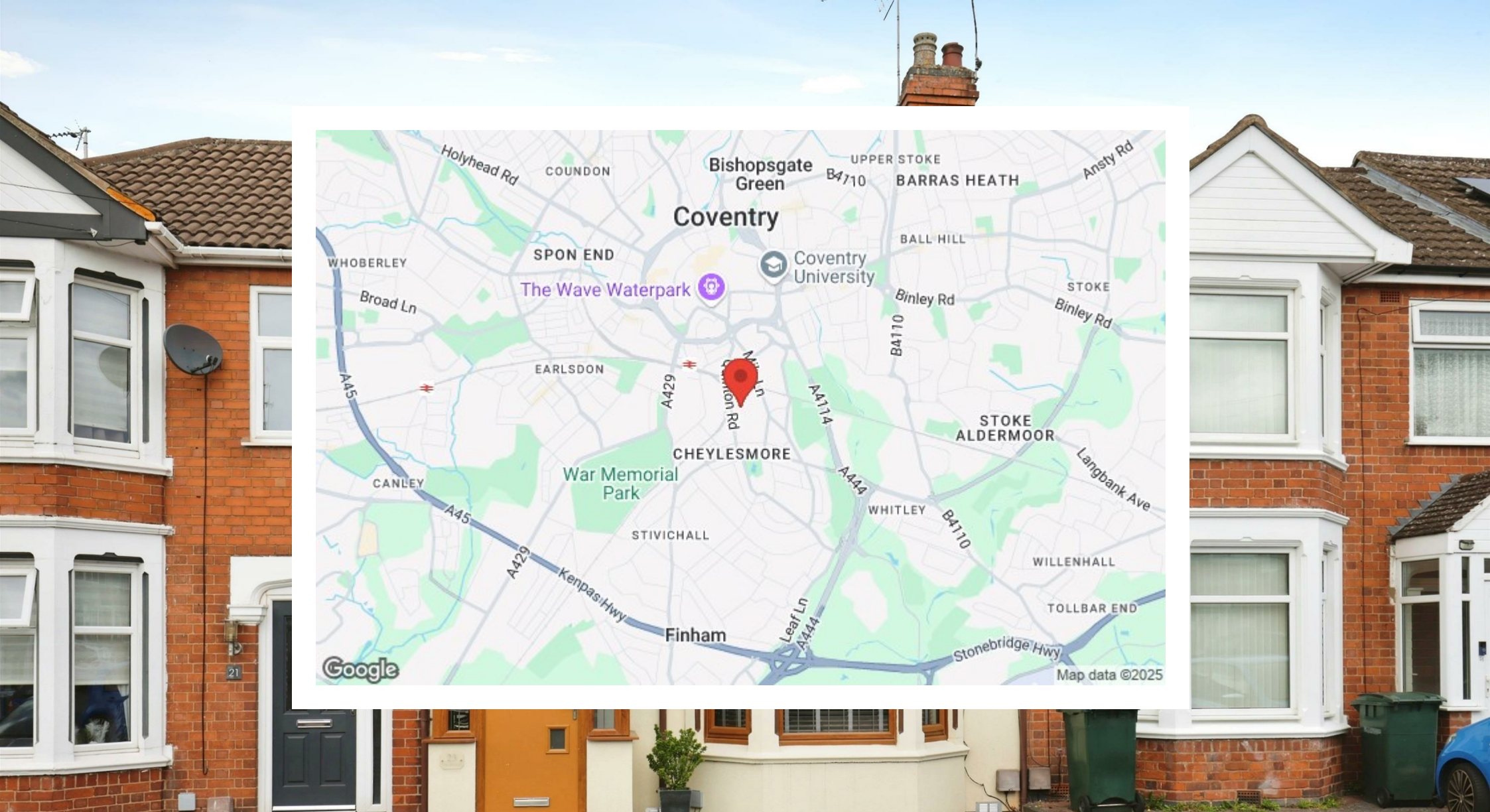



PROMINENCE
— ESTATES —

A beautifully presented and spacious three-bedroom terraced home located in the popular residential area of Cheylesmore, available from 1st August. This lovely family home offers generous living space throughout and features a large out house, ideal for use as a home office, gym, or additional storage. Situated in a well-established neighbourhood, the property is within easy reach of a range of local amenities including good schools, shops, parks, and excellent transport links to Coventry city centre and surrounding areas. This is a perfect opportunity for families or professionals seeking comfort, convenience, and flexible living space in a sought-after location.







Prominence Estates
5 Queen Isabels Avenue,
Cheylesmore,
Coventry,
CV3 5GE

02476 309 826
lettings@prominenceestates.com
www.prominenceestates.com


PROMINENCE
— ESTATES —