

  
**PROMINENCE**  
ESTATES



**RESIDENTIAL**  
PROPERTY EXPERTS

COVENTRY, WARWICKSHIRE  
& LEAMINGTON SPA

**EARLSDON AVENUE NORTH,**  
COVENTRY, CV5 6FZ

**£550 PER CALENDAR**



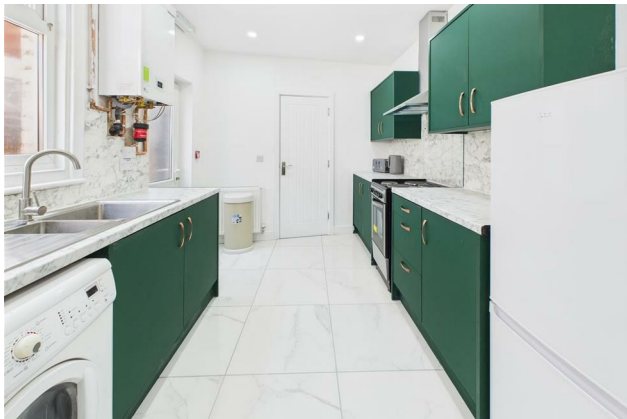
## EARLSDON AVENUE NORTH



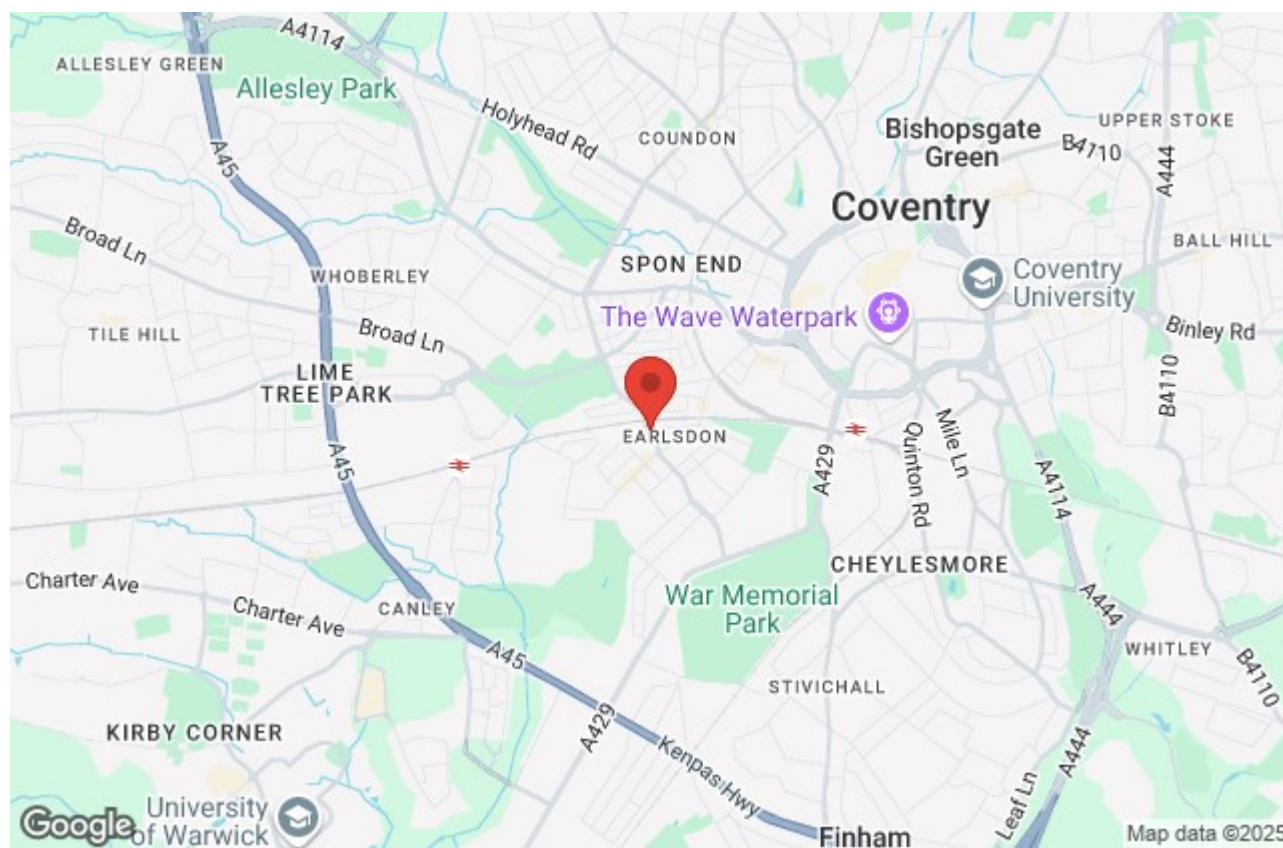
**PROMINENCE**  
— ESTATES —

Newly Renovated And Modern Fully Furnished Double Bedroom En-Suite In A Shared House With An Open Plan Kitchen - **BILLS INCLUDED & COUNCIL TAX.** Located only a short walk into Coventry City Centre and Earlsdon High Street the property is well situated with local bus routes. We have a range of newly renovated rooms to choose from and no expense has been spared as they have been completed to a very high standard. The room benefits from modern furniture and come fully furnished including double bed, wardrobe, bedside table and chest of drawers. The room further benefits from an en-suite shower room, a large and spacious communal kitchen for those wanting to socialise with others in the property. Bi-Weekly communal cleaning also ensures that the property is kept clean and tidy.

For more information or to book you your viewing, contact our office today.







Prominence Estates  
5 Queen Isabella Avenue,  
Cheylesmore,  
Coventry,  
CV3 5GE

02476 309 826  
[lettings@prominenceestates.com](mailto:lettings@prominenceestates.com)  
[www.prominenceestates.com](http://www.prominenceestates.com)

  
**PROMINENCE**  
— ESTATES —