

  
**PROMINENCE**  
ESTATES



**RESIDENTIAL**  
PROPERTY EXPERTS

COVENTRY, WARWICKSHIRE  
& LEAMINGTON SPA

**HAREFIELD ROAD,**  
STOKE, COVENTRY, CV2 4BT

**£1,500 PER MONTH**

## HAREFIELD ROAD



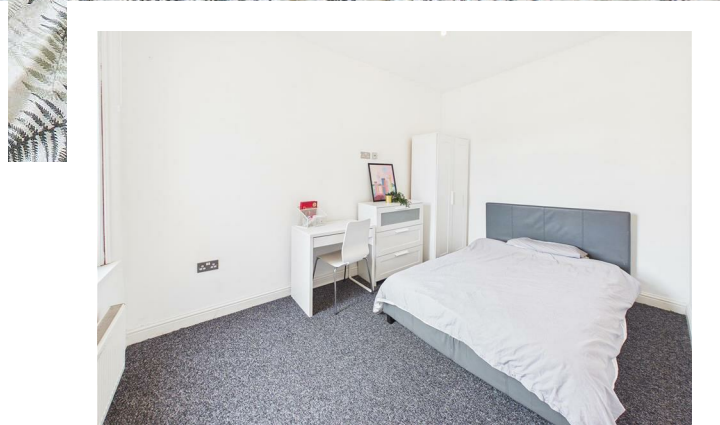
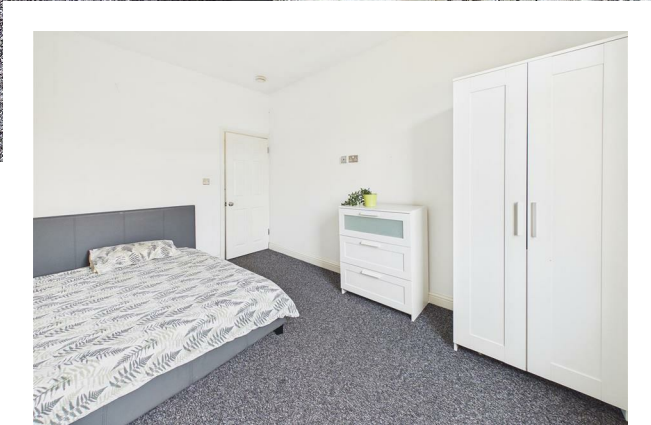
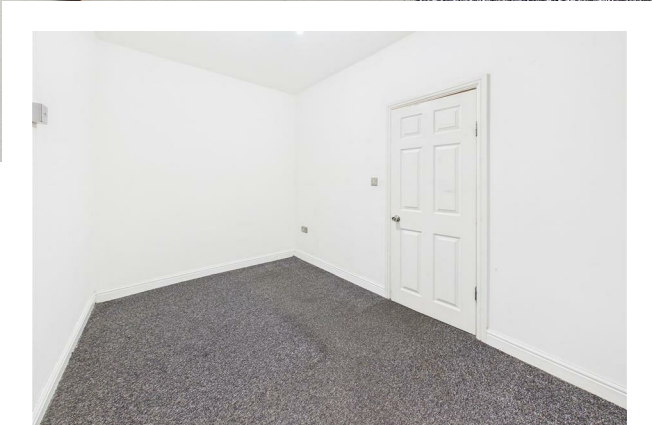
**PROMINENCE**  
ESTATES

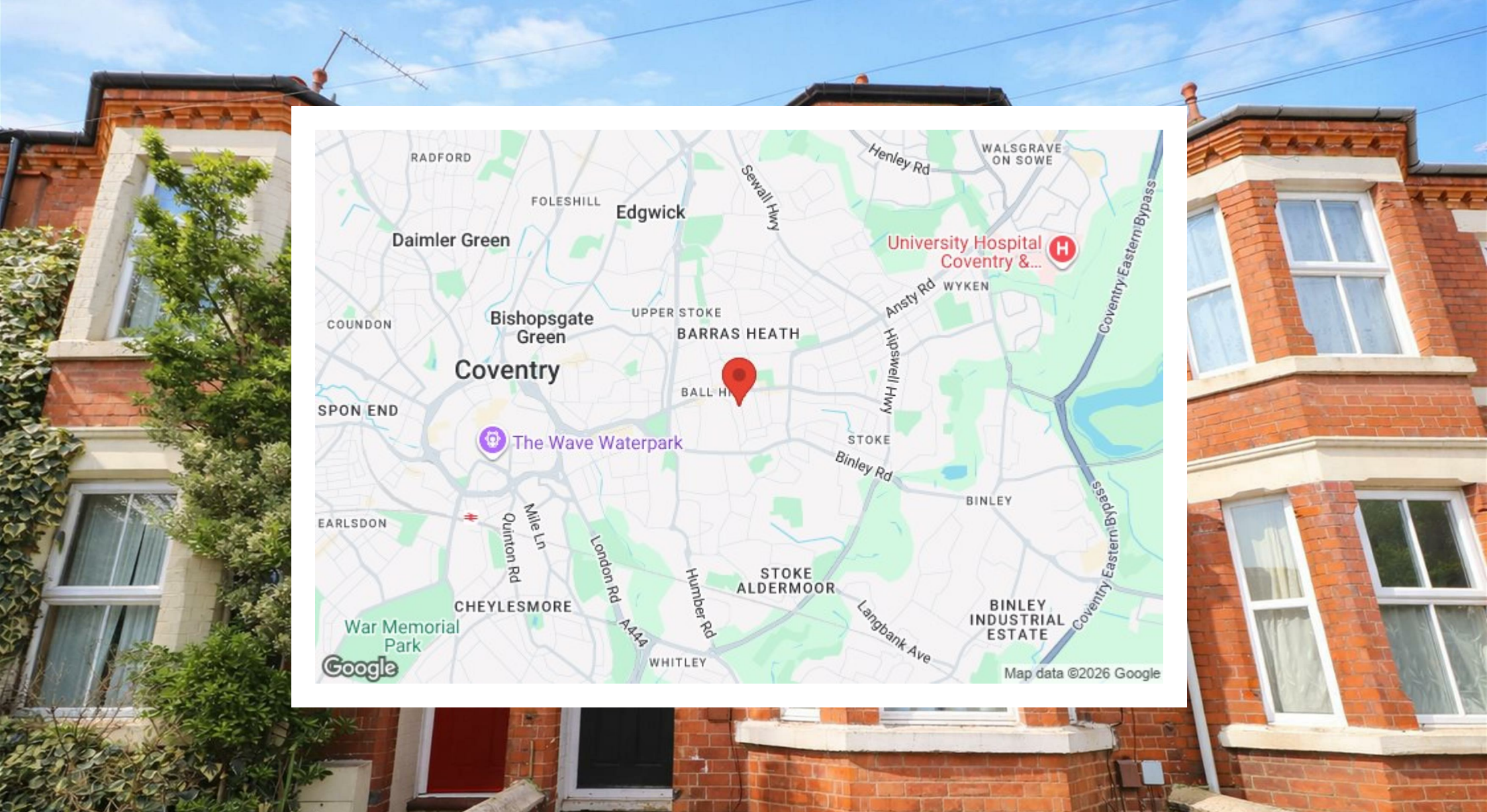
Available now, this spacious and fully furnished 4-bedroom, 2-bathroom house on Harefield Road, Stoke, Coventry is ideal for four professional sharers or students. The property offers generous living accommodation with well-sized bedrooms, modern furnishings, and two bathrooms for added convenience. Bills are not included.

Harefield Road is a sought-after location for sharers due to its proximity to local shops, schools, and everyday amenities, while also offering easy access to the city centre and surrounding areas.

Located in the popular Stoke area, the property benefits from excellent transport links with regular bus routes to Coventry City Centre, Coventry University, and University Hospital Coventry & Warwickshire. Local amenities including supermarkets, convenience stores, takeaways, cafés, gyms, and parks are all within easy reach. The area is also well connected to major road networks and public transport, making commuting simple and convenient.







Prominence Estates  
5 Queen Isabels Avenue,  
Cheylesmore,  
Coventry,  
CV3 5GE

02476 309 826  
lettings@prominenceestates.com  
www.prominenceestates.com

  
**PROMINENCE**  
ESTATES