


PROMINENCE
ESTATES



RESIDENTIAL
PROPERTY EXPERTS

COVENTRY, WARWICKSHIRE
& LEAMINGTON SPA



129

BOLINGBROKE ROAD,
STOKE, COVENTRY, CV3 1AR

£1,250 PCM

BOLINGBROKE ROAD



PROMINENCE
— ESTATES —

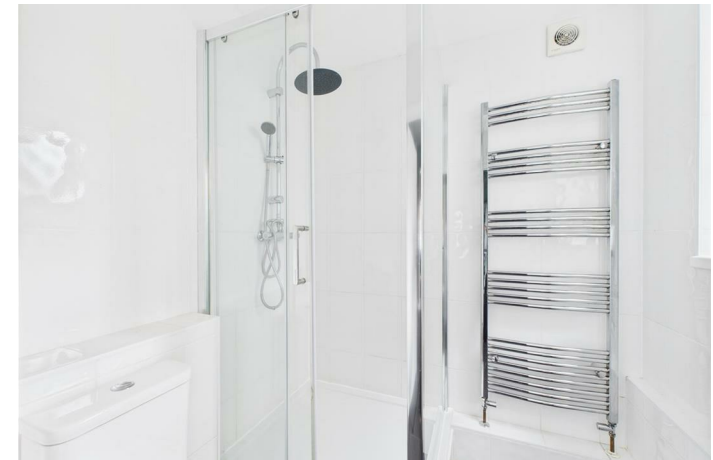
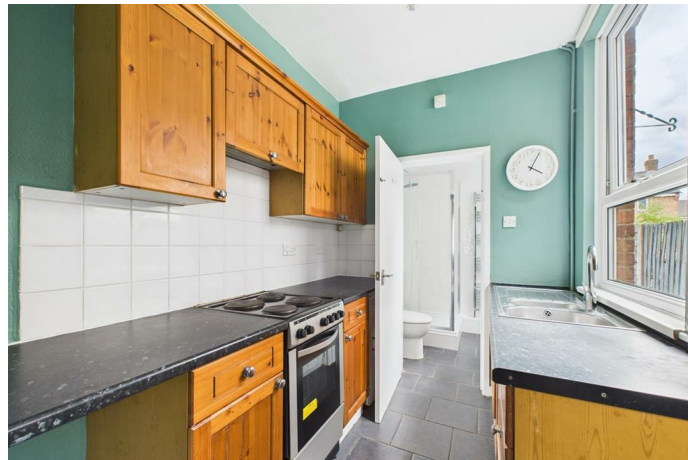
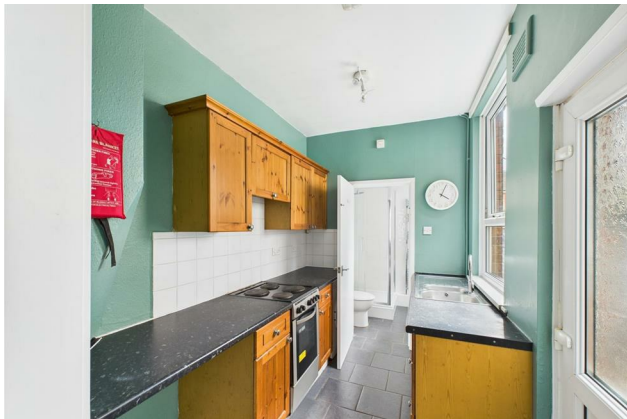
This well-presented four-bedroom terraced home offers spacious double bedrooms throughout and comes fully furnished, making it an ideal choice for working professionals. Benefitting from excellent transport links and located just a short distance from Coventry city centre, this property also boasts on-street parking and a private, low-maintenance rear garden.

services. Humber Road, just around the corner, features various businesses including takeaways and convenience stores. Additionally, the nearby Binley Road and Walsgrave Road provide access to supermarkets, pharmacies, and other essential retailers.

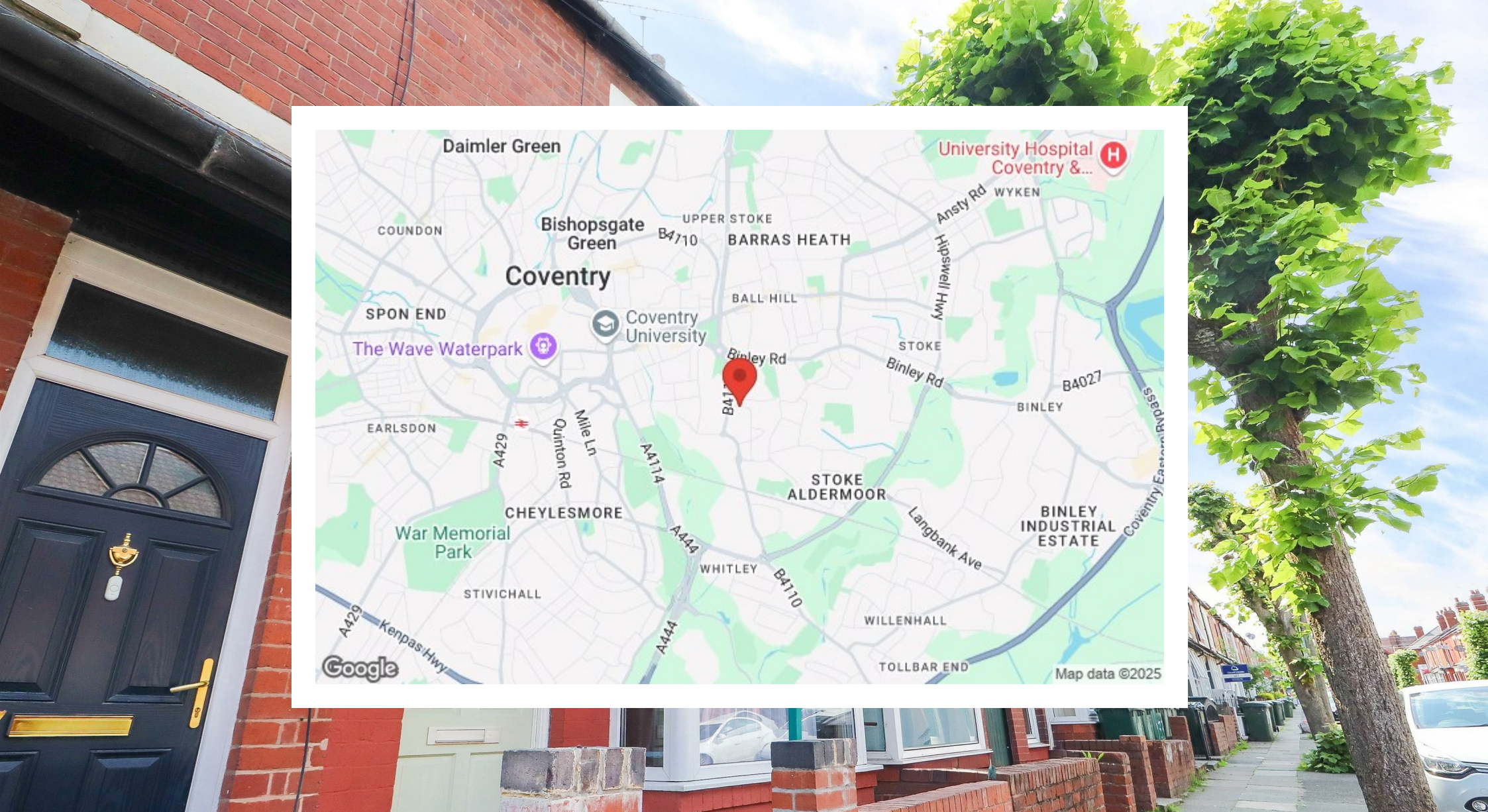
With ample living space and a superb location close to schools and shopping facilities, this rental opportunity is not to be missed.

The home is thoughtfully laid out, providing generous living accommodation. Each bedroom is double in size, offering ample space and comfort. The property features a fully fitted kitchen, a modern bathroom, and a convenient downstairs W/C, with everything you need to move straight in.

The area also offers a selection of shops and







Prominence Estates
5 Queen Isabels Avenue,
Cheylesmore,
Coventry,
CV3 5GE

02476 309 826
lettings@prominenceestates.com
www.prominenceestates.com


PROMINENCE
— ESTATES —