

  
**PROMINENCE**  
ESTATES



**RESIDENTIAL**  
PROPERTY EXPERTS

COVENTRY, WARWICKSHIRE  
& LEAMINGTON SPA

**HIMBLETON DRIVE,**  
BINLEY, COVENTRY, CV3 2TS

**OFFERS OVER**  
**£265,000**



HIMBLETON DRIVE



**PROMINENCE**  
— ESTATES —

This spacious 4-bedroom town house in Binley offers a perfect blend of modern living and comfort. The property features a generously sized living area, ideal for family gatherings or relaxing evenings. The fully fitted kitchen provides ample space for meal preparation, while a separate dining area offers an inviting space for family meals.

The master bedroom includes a convenient ensuite, providing a private retreat within the home. The additional three bedrooms are well-proportioned and versatile, perfect for a growing family or for use as a home office or guest rooms.

With an integral garage and a private driveway, parking is hassle-free, and there's plenty of space for additional vehicles. The property also offers great outdoor space, perfect for enjoying sunny days.

Conveniently located in Binley, this town house is

close to local amenities, schools, and transport links, offering both peace and accessibility. Whether you're a growing family or looking for a spacious home with modern amenities, this property is the ideal choice.

[Living Room](#)

[Kitchen](#)

[W/C](#)

[Bedroom One](#)

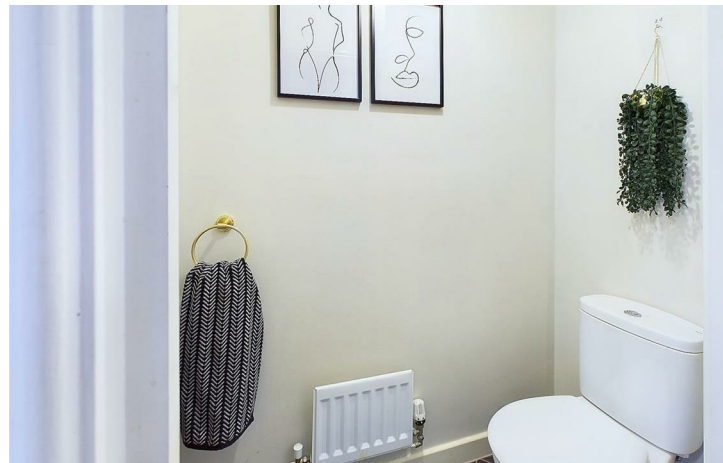
[En-suite](#)

[Bedroom Two](#)

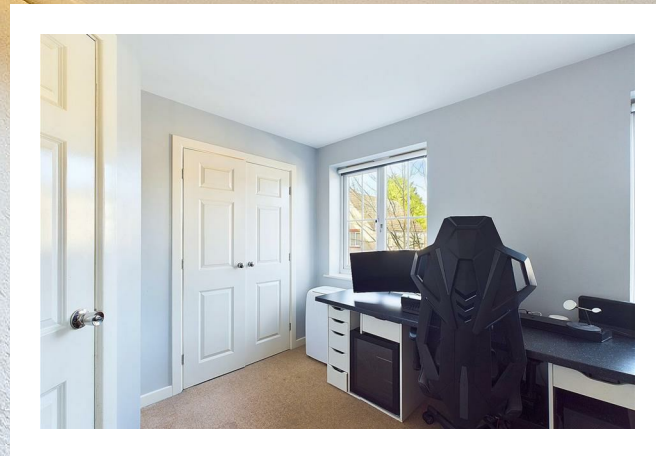
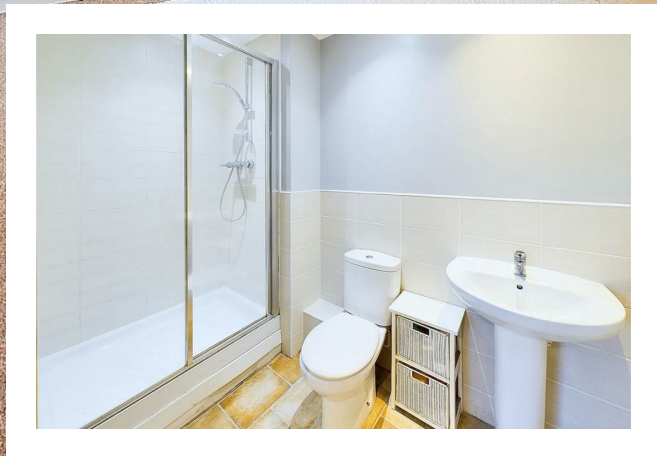
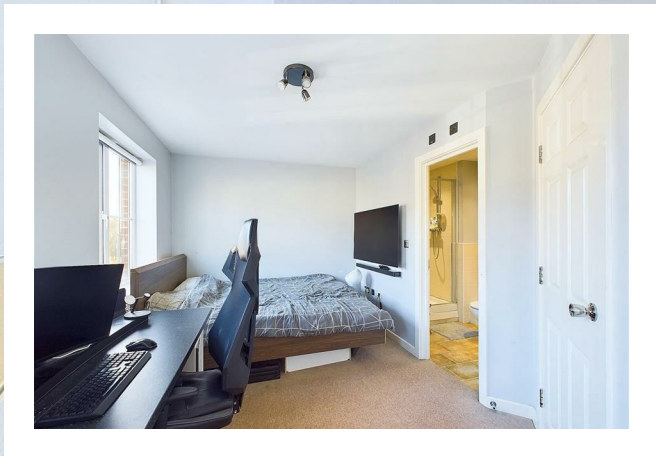
[Bedroom Three](#)

[Bedroom Four](#)

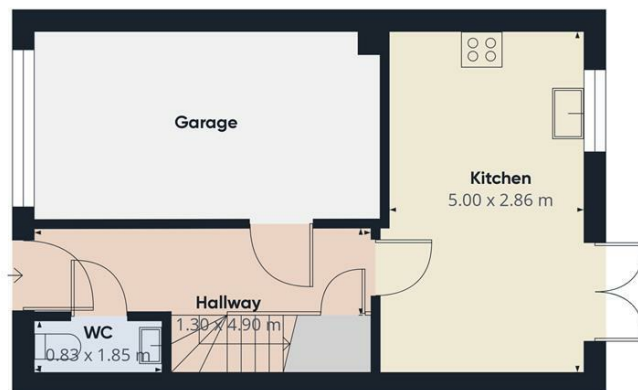
[Bathroom](#)



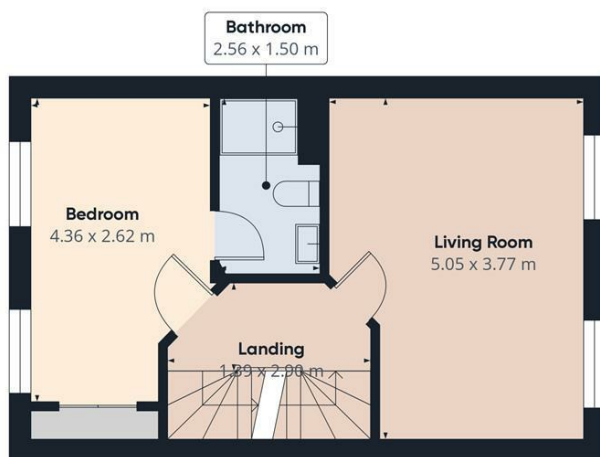




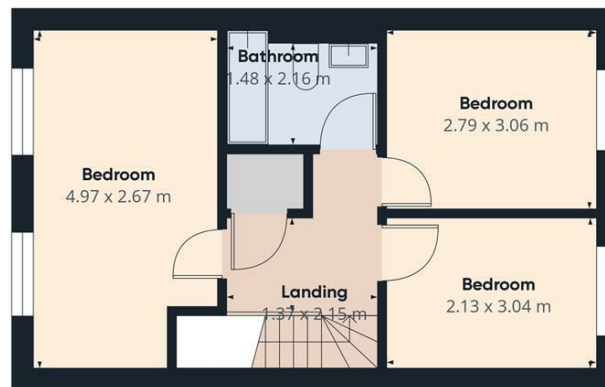




Ground Floor



Floor 1



Floor 2



#### Energy Efficiency Rating

	Current	Potential
Very energy efficient - lower running costs		
(92 plus) <b>A</b>		
(81-91) <b>B</b>		
(69-80) <b>C</b>		
(55-68) <b>D</b>		
(39-54) <b>E</b>		
(21-38) <b>F</b>		
(1-20) <b>G</b>		
Not energy efficient - higher running costs		
<b>England &amp; Wales</b>	77	85
EU Directive 2002/91/EC		

Prominence Estates  
5 Queen Isabels Avenue,  
Cheylesmore,  
Coventry,  
CV3 5GE

02476 309 826  
sales@prominenceestates.com  
www.prominenceestates.com

  
**PROMINENCE**  
ESTATES